

Relocation of the Campus School

CITY SCHOOL DISTRICT OF
NEW ROCHELLE

DR. LAURA FEIJOO

JUNE 23, 2020



An Overview

Has been in operation for over 25 years

Serves ~80 students per year

Serves students who have struggled to find success at NRHS main campus for a variety of reasons

- ~30% have IEP's or 504's (based on this school year's enrollment)
- ~92% Black/Hispanic
- ~80% Free/Reduced Lunch

Smaller program → more individualized attention, a more nurturing supportive environment

Like their peers, students have access to BOCES in addition to the courses required to graduate (core credit deficiencies have been made up via Night/Summer School)

Instructional Plan: 2020-2021

Bell Schedule will be aligned with the Main Campus

- 8:15 - 3:07
- 48 min periods w/ 4 min passing time
- Multiple lunch periods

Will serve ~60 students

Will potentially provide courses to address credit deficiencies

Staff to include: 1.6 ELA teachers, 1.6 SS teachers, 1.6 Science teachers, 1.2 Math teachers, 1 Special Ed. teacher, 1 Art teacher, 1 Music teacher, .8 PE/Health teacher, 1 School Counselor, 1 Psychologist, 1 Custodian, 4 Security staff (2 FT, 2 PT)

Special Education teacher devoted solely to the needs of students, providing Academic Lab as well as consultant teacher services

Strategic Considerations

INSTRUCTION	ACCESS AND EQUITY	SAFETY AND SECURITY	LONG RANGE PLANNING
<p>Students need a safe and nurturing environment to learn.</p>	<p>Students should be able to access C&I at the main campus of NRHS.</p>	<p>Campus school should be in a facility that is approved by SED</p>	<p>CSDNR anticipates that the current City Hall will be turned over to the district.</p>
<p>Students need a space which is well maintained and location where school will not be cancelled due to lack of oil or plumbing issues</p>	<p>Students should be exposed to a growth mindset which encourages them to participate in AP, PAVE and or any of the additional options available for NRHS main campus students.</p>	<p>Campus school should not share space with another origination and students should not be interacting with members of the community while in school.</p>	<p>City Hall is not ready to accept students and will need major modifications to be suitable for students.</p> <p>Major investments will be needed at that location.</p>
<p>Students need advancements in technology – no computer lab, one to one computing.</p>	<p>Students should have a food service option. Students should have access to a cafeteria.</p>	<p>Students need to continue to be in a building with security and cameras.</p>	<p>The BOE will have to deliberate over the options. 9th grade academy/ BOCES/ Campus school.</p>

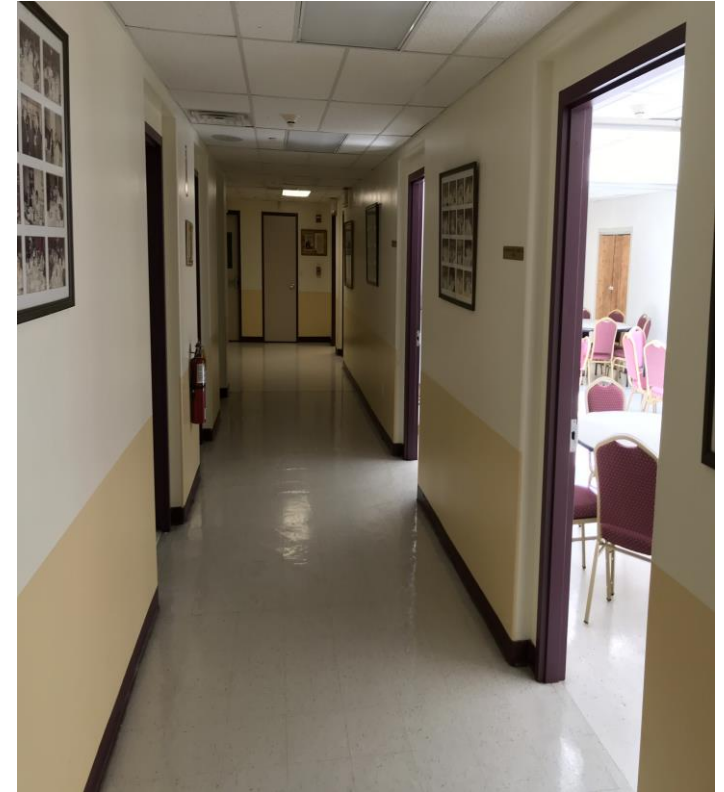
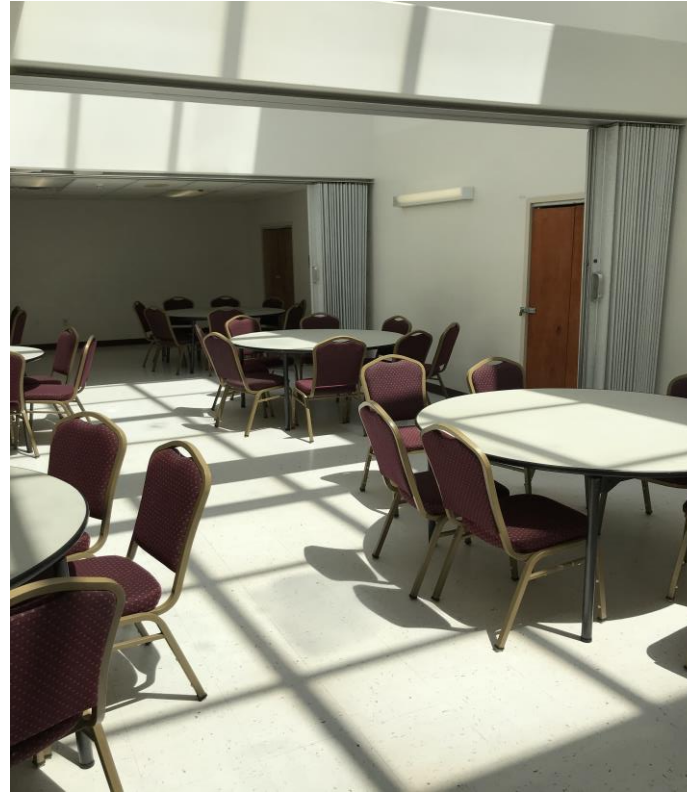
Images of Current Location



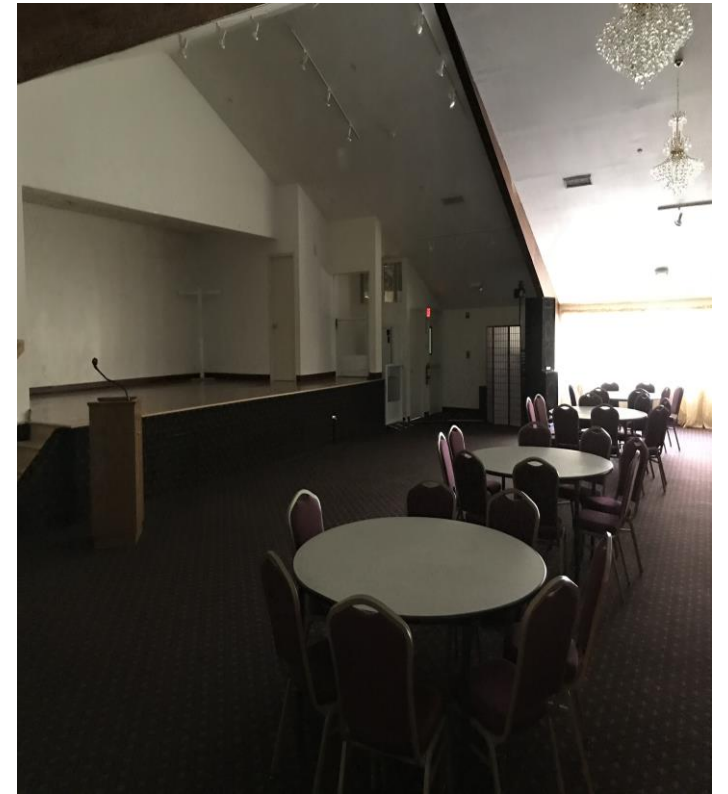
Images of Current Location



Images of New Proposed Location



Images of New Proposed Location



Images of New Proposed Location



FAQs

Question	Answer
● Will there be a sink in the art room and science room?	There will be a sink in the art room and the science room
● Do we have the Certificate of Occupancy for the space or is it in progress?	We need 2 Certificates of Occupancy. One from the City (currently exists) and one from SED after improvements made.
● Where are we specifically with the SED approval and what can we anticipate?	Documents have been submitted to SED and no issues are anticipated. There may be minor changes but nothing to preclude approval for September.



Improvement



Neutral



Trade-Off



N/A

FAQs

Question	Answer
How many security cameras will be at the site?	Six cameras will be installed in strategic locations in the Bethesda facility.
Will teachers have access with the key fob?	A key Fob system is not necessary. Appropriate individuals will have keys such as administrators, security, and custodial services who will grant access to teachers as needed.
Will there be security staffing?	Yes, the same security staffing will be present at the new location.



Improvement



Neutral






Trade-Off



N/A

FAQs

Question	Answer
  Without a gymnasium, how will PE classes be held?	<ul style="list-style-type: none">○ Boys and Girls Club while it is still operational.○ Use of Lincoln Park in good weather○ Cafeteria use for PE like dance○ Access to NRHS for PE
 Will the BOE visit the site?	The BOE visited the site on June 22, 2020



Improvement



Neutral



Trade-Off



N/A

FAQs

Question	Answer
What will the classrooms space look like?	<ul style="list-style-type: none">○ The front walls of the classrooms will have Smart Boards/ Promethean Boards.○ If the classrooms with partitions need additional sound proofing, we can install sound blankets.○ Data drops are planned for each space○ The practice of using Computer labs is outdated; the district is moving to a one-to-one initiative with Chromebooks. This will be available to Campus Students in September○ Science Lab is on a cart which is not uncommon and the classroom will have a sink○ Art room will be available and can also be used for music



Improvement



Neutral



Trade-Off



N/A

FAQs

Question	Answer
<p>How will students travel to and from Campus?</p>	<ul style="list-style-type: none"> ○ Students will be supervised to travel to NRHS for classes that are programmed into their schedule. ○ We are looking into transportation ○ Access to afterschool or sports programs would allow students to arrive at NRHS campus in 23 minutes if walking.
<p>Where will teachers park?</p>	<ul style="list-style-type: none"> ○ 30 parking spaces have been allocated.

The screenshot shows a Google Maps interface with two locations pinned: New Rochelle High School and Bethesda Baptist Church of Below the pins are buttons for '+ Add Stop' and 'Route Settings'. A 'Choose Your Route' section is visible, showing 'Route #1' selected and 'Route #2' as an alternative. The route for Route #1 is 'via Clove Rd' and shows a walking time of 23min and a distance of 1.0mi.



Improvement



Neutral




Trade-Off



N/A

FAQs

Question	Answer
 What are the additional benefits to moving the Campus School not already addressed?	<ul style="list-style-type: none">○ Security at the facility is optimal as Campus school is the only day program○ Clean and well-maintained space○ Cafeteria and kitchen for food service and preparation.○ Proximity to the high school and City Hall (may be the future location)○ No known heating issues. We do not expect will not have to close school for heating issues.



Improvement



Neutral





Trade-Off



N/A

FAQs

Question	Answer
 <p>What Capital improvements are needed an what is the cost?</p>	<ul style="list-style-type: none">○ There are minimal Capital Improvements needed. They are:<ul style="list-style-type: none">○ Data drops○ Change swing of one door○ Add sinks for science and art. <p>Estimated Capital Costs approximately \$50,000. This is not a large investment and well worth the benefits the new location offers while we deliberate on potential future uses of City Hall and plan the capital implements needed there. The district has been contemplating a move for years.</p>
 <p>○ What was the process?</p>	<ul style="list-style-type: none">○ Met with administrators: Dr. Marrero, Director of Campus School, NRHS Principal, Director of Facilities.○ Site inspected by Architects who specialize in schools, Mr. Thurnau, Mr. Kern and administrators.○ Submitted required paperwork to the City and SED



Improvement



Neutral



Trade-Off



N/A