

# Office of School Planning & Research at Western Suffolk BOCES

- Has been generating Long Range Planning Studies since 1985
- More than 1,000 studies have been completed by Western Suffolk BOCES for districts throughout New York State
- Some of the Westchester County districts include White Plains, Byram Hills, Bronxville, Harrison,
- North Salem, Somers, Tarrytown, Rye City & Ossining



# What is Involved in a Study?

## Demographics

- Births
- Housing
- Population
- Non-Public School Enrollment

## Enrollment

- Trends over the past 10 years
- Migration from grade to grade
- Birth Persistence Analysis



# Research Sources:

Includes the following but is not limited to...

- U.S. Census Bureau
  - American Community Survey (U.S. Census)
  - American Fact Finder (U.S. Census)
- New York State Education Department
- New York State Department of Health
- U.S. Department of Education
- New York State Office of Real Property Services
- National Center for Health Statistics
- Pew Research Center
- Brookings Institute
- City of New Rochelle

# Accuracy of Projections

- Overall enrollment projections produced by Western Suffolk BOCES generally fall within a 4 percent margin of error.
- Projections based on students already enrolled in the system are the most reliable.
- Projections based on documented births are slightly less reliable.
- Projections based on estimates of future births are the least reliable.
- The most reliable projections are those calculated for the periods closest in time, particularly for the first five-year period.

# Accuracy of Previous Projections

Grades	2020-21 Actual Enrollment	2020-21 Projected Enrollment	Difference	Accuracy
K - 12	10,005	10,365	360	3.6%
K - 5	4,446	4,604	158	3.6%
6 - 8	2,202	2,276	74	3.4%
9 - 12	3,357	3,485	128	3.8%

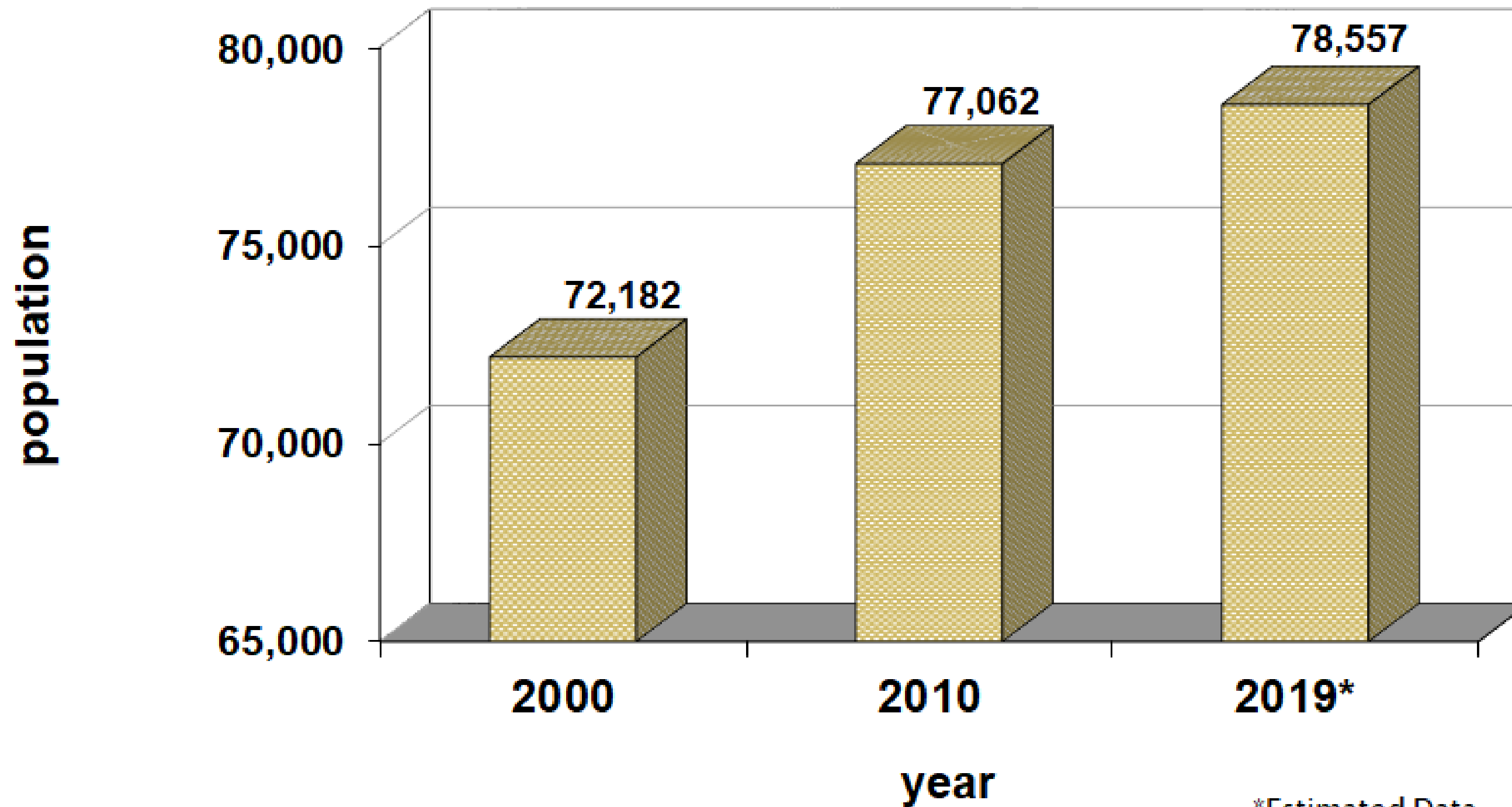


# Demographics

# City School District of New Rochelle: Resident Population

Increased by 6.8 % (4,880 people) between 2000-2010

Increased by 1.9 % (1,495 people) between 2010-2019\*



# City School District of New Rochelle: Resident Age Structure

Age	2000 – %	2010 – %	2019* – %
Under 5	6.8	6.1	5.1
5 – 19	19.9	20.2	19.3
20 – 39	28.0	25.9	26.0
40 – 64	29.8	32.7	32.0
65 +	15.5	15.2	17.6
Median Age	NA	38.4	39.7

Westchester County median age (2019\*): 40.9 years

\* 2015-2019 American Community Survey Estimates



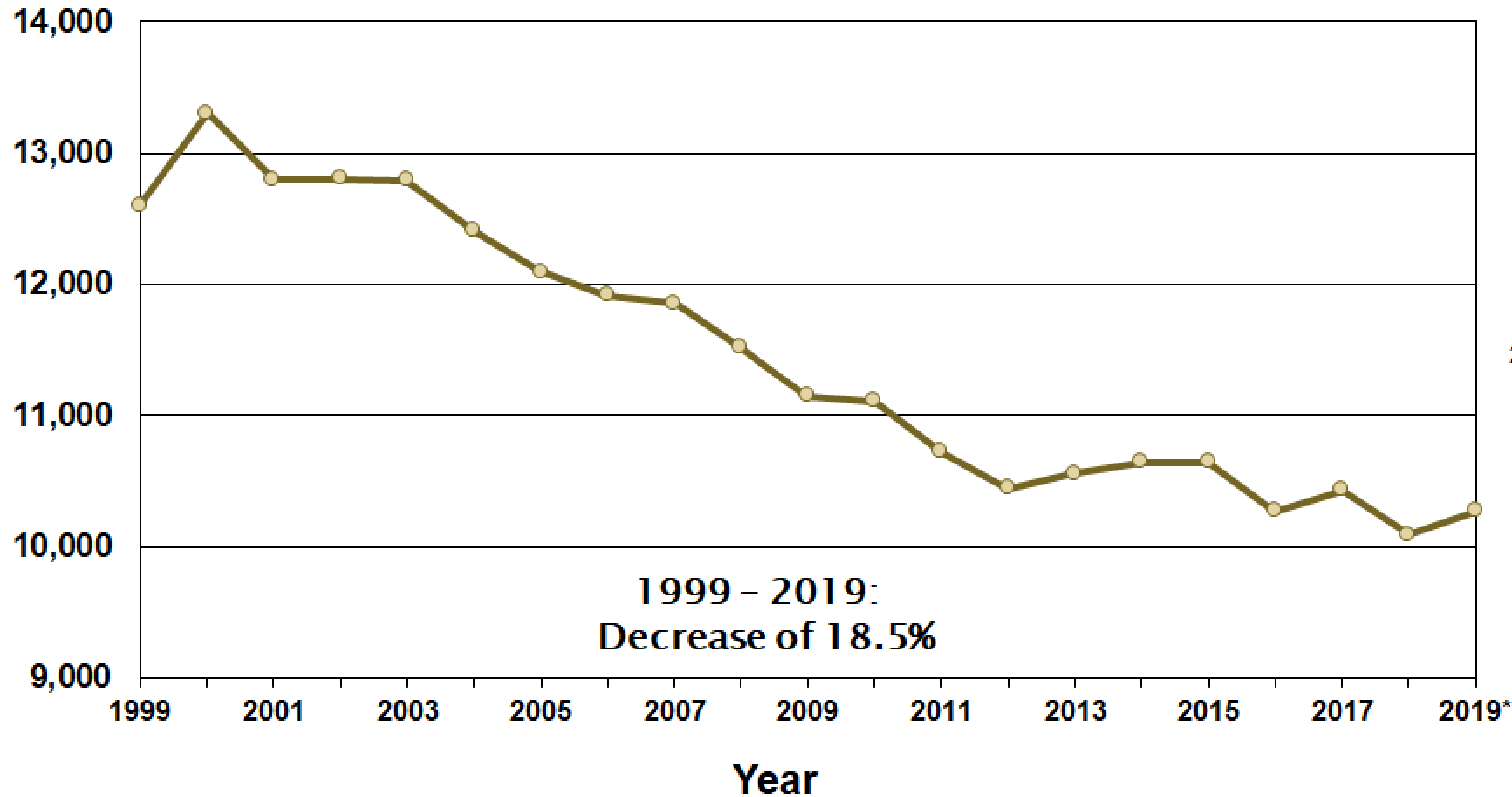
# City School District of New Rochelle: Resident Ethnic Breakdown

<b>Ethnic Group</b>	<b>2000 – %</b>	<b>2010 – %</b>	<b>2019* – %</b>
<b>White</b>	<b>55.8</b>	<b>47.9</b>	<b>43.6</b>
<b>Hispanic</b>	<b>20.1</b>	<b>27.8</b>	<b>30.2</b>
<b>Black</b>	<b>18.5</b>	<b>18.1</b>	<b>18.7</b>
<b>Asian/other</b>	<b>3.7</b>	<b>4.6</b>	<b>6.4</b>
<b>Two/more</b>	<b>1.9</b>	<b>1.5</b>	<b>1.1</b>

\* 2015-2019 American Community Survey Estimates

# Westchester County Births: 1999-2019

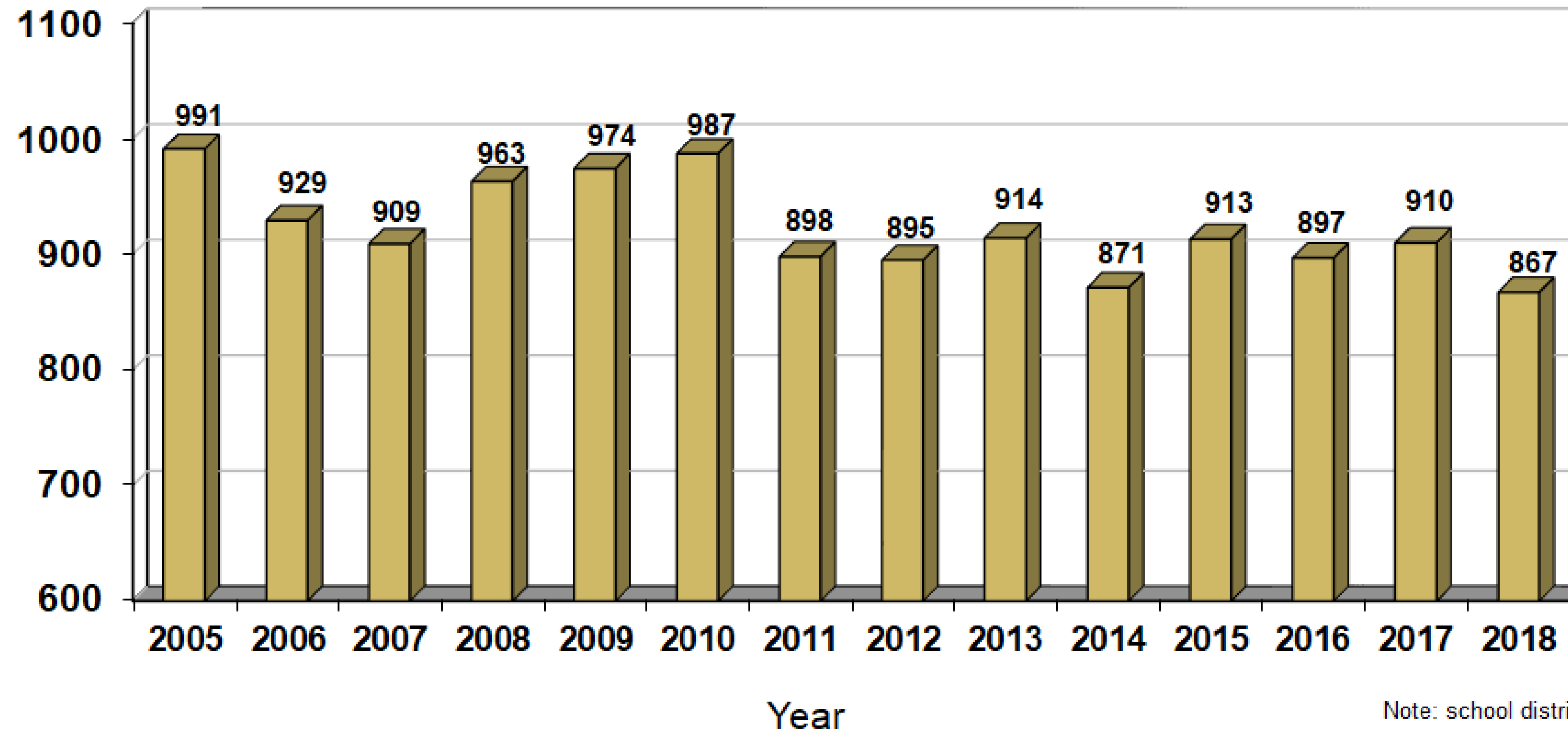
Number of Births



Sources:  
1999 - 2018 - NYS Department of Health;  
2019 - Centers for Disease Control & Prevention  
\*2019 data is preliminary

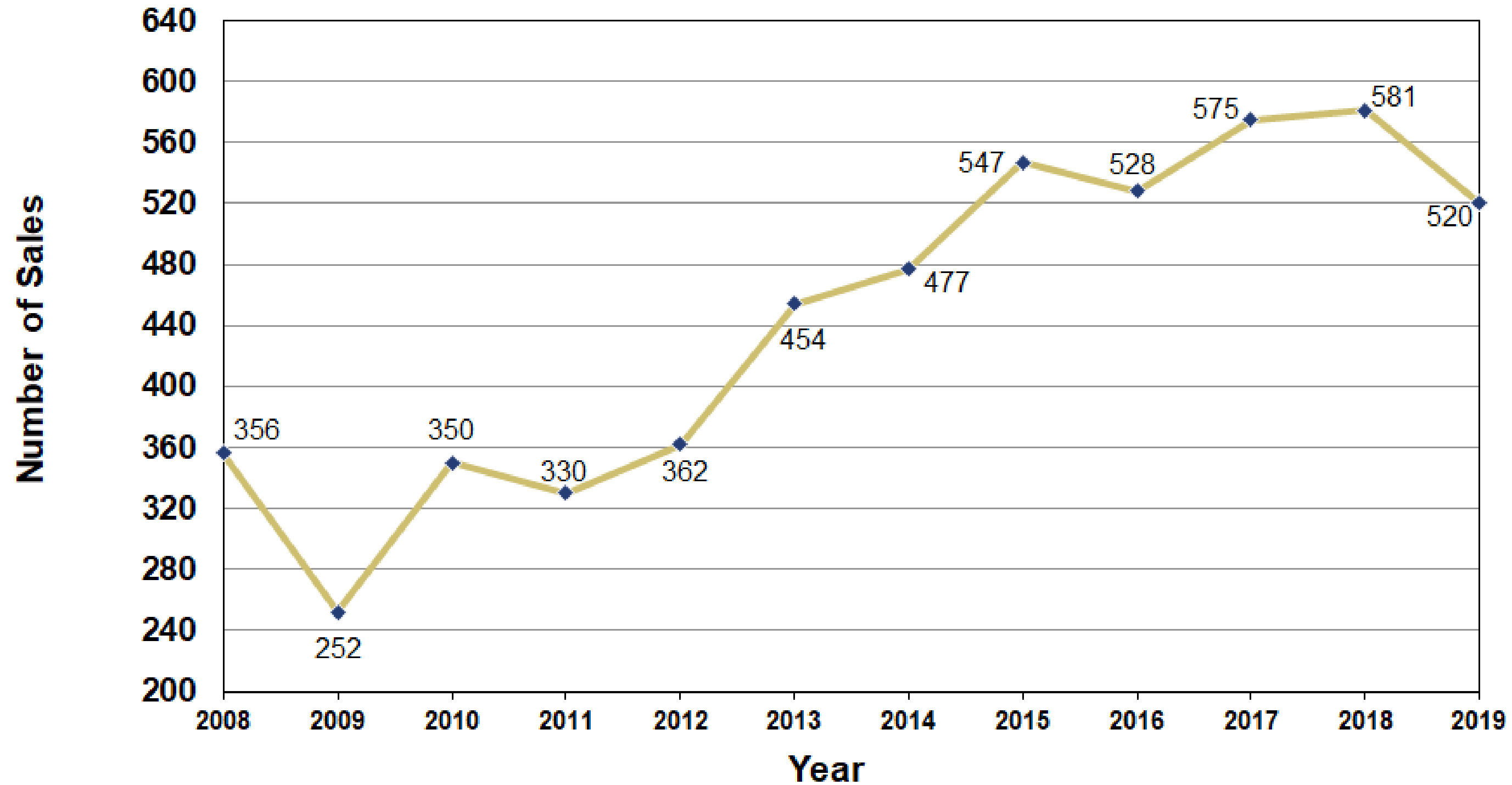
# CSD New Rochelle: 2005-2018

SD Births



Note: school district birth data for 2019 has not yet been released by the NYS DOH

# CSD New Rochelle Housing Sales: 2008-2019



# CSD New Rochelle Household Characteristics

	2000	2010	2019*
<b>% Households w/ Children Under 18</b>	<b>35.7%</b>	<b>34.0%</b>	<b>30.9%</b>

<b>Owner Occupied Housing Units 2019*</b>	<b>Renter Occupied Housing Units 2019*</b>
<b>51.1%</b>	<b>48.9%</b>

\* 2015-2019 American Community Survey Estimates

# New Housing in the City of New Rochelle

Unit Size	# of Units Under Construction	# of Units Approved
Studios	376	990
1-BR	985	2,059
2 BR	586	1,023
3-BR	78	103
4-BR	0	3
<b>Total</b>	<b>2,025</b>	<b>4,178</b>

Source: City of New Rochelle

# City of New Rochelle New Housing: Anticipated Student Yields Included in the Projections

Status	# units	Projected Student Yield*
Completed in 2020	484	14
Under Construction	1,655	99
Approved – Anticipated 2021	4	1
Total	2,143	114

Note: The PUMS multiplier, developed by *WXY Consultants*, was applied in order to develop student generation rates from new/proposed housing.

\*Public school children

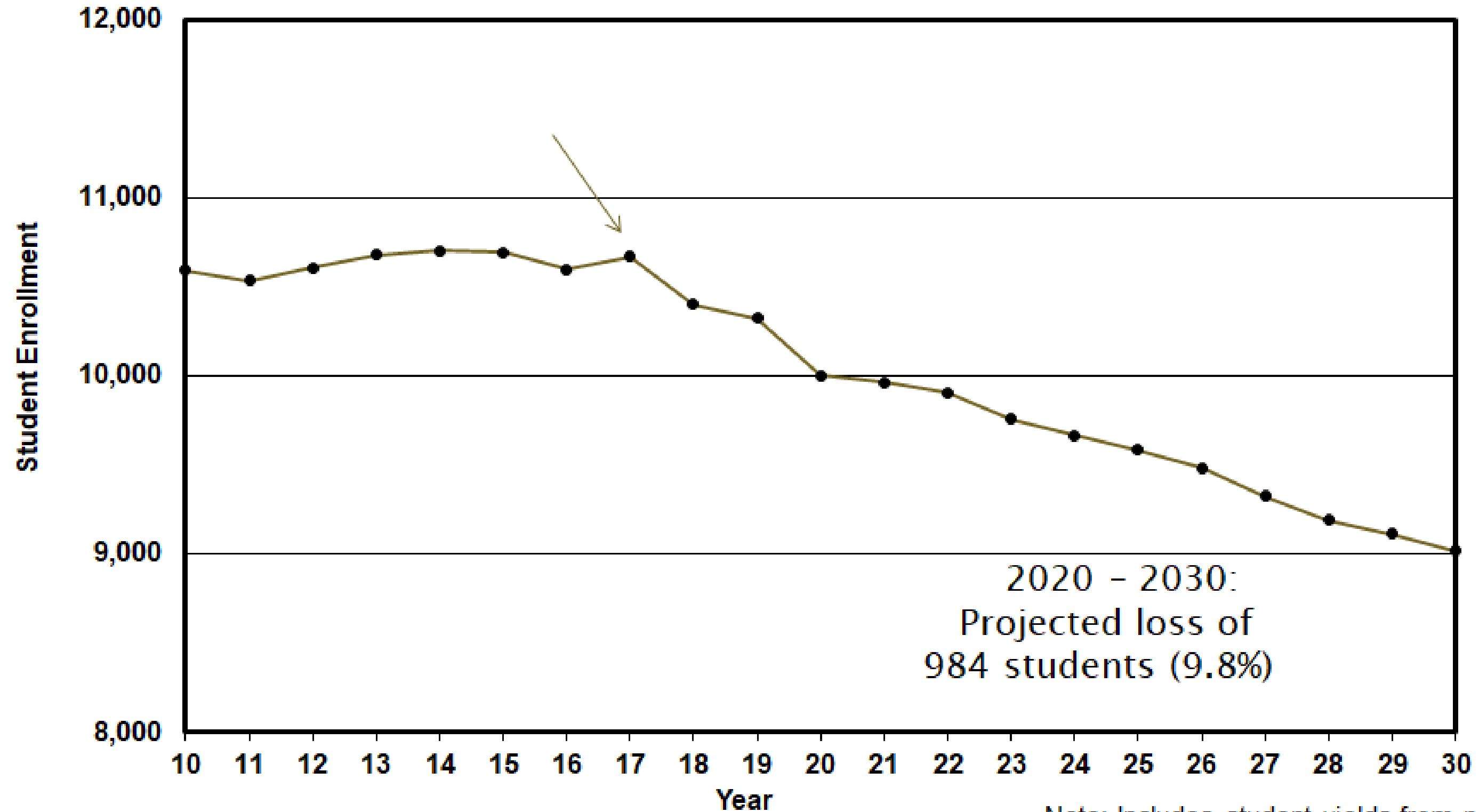


# Enrollment



# City School District of New Rochelle

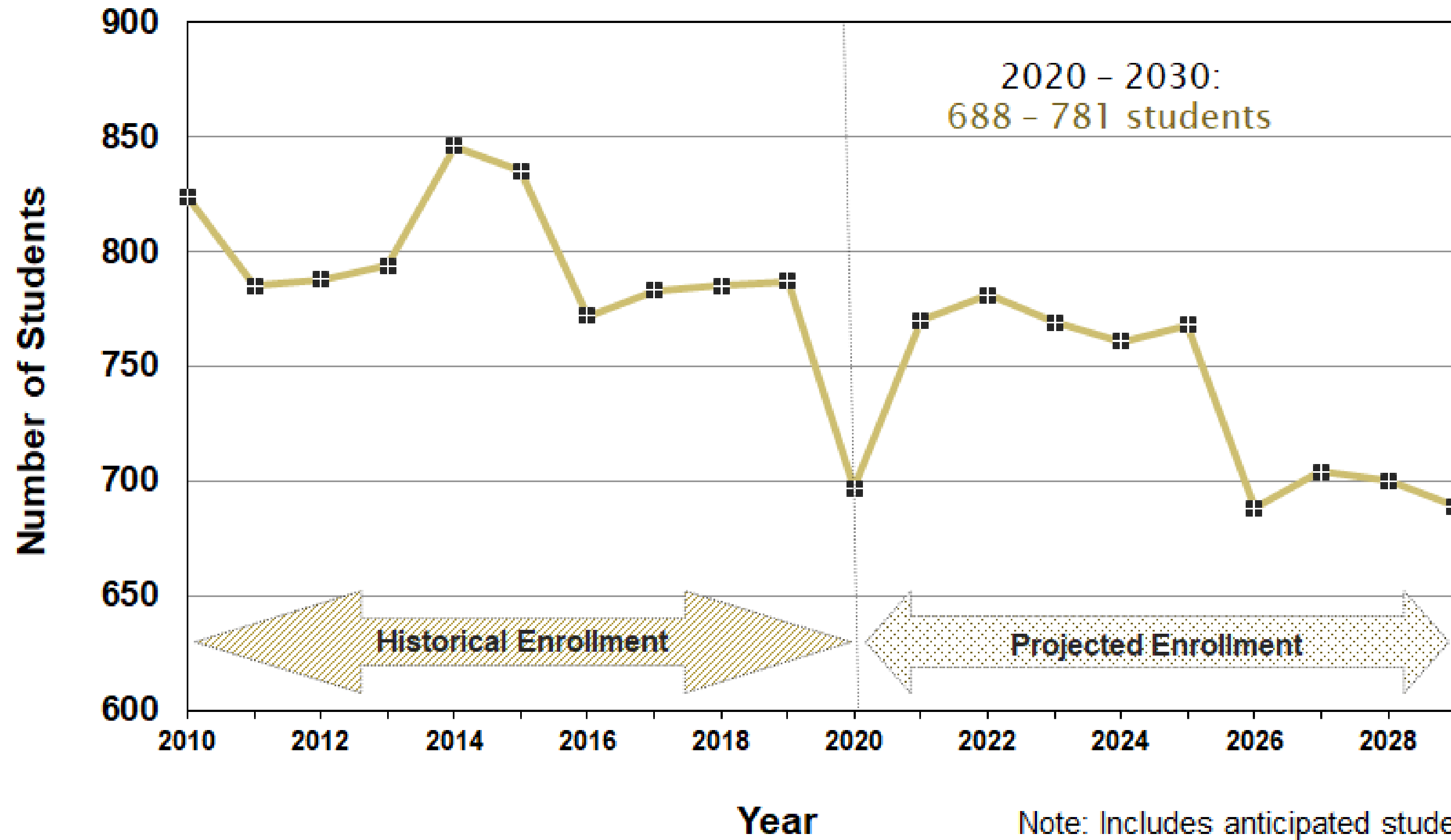
## Enrollment: 2010 - 2030



Note: Includes student yields from new housing with anticipated completions in 2020 & 2021

# City School District of New Rochelle

## Kindergarten Enrollment 2010 - 2030



Note: Includes anticipated student yield from housing with anticipated completion in 2020 & 2021

# City School District of New Rochelle

## Enrollment Change by Grade Configuration

Grade Configuration	Student Losses		
	2010 – 2020 Actual	2020 – 2025 Projected	2025 – 2030 Projected
K – 5	-356 (7.4 %)	-35 (0.8 %)	-337 (7.6 %)
6 – 8	-179 (7.5 %)	-91 (4.1 %)	-61 (2.9 %)
9 – 12	-56 (1.6 %)	-294 (8.8 %)	-166 (5.4 %)
<b>Total</b>	<b>-591 (5.6 %)</b>	<b>-420 (4.2 %)</b>	<b>-564 (5.9 %)</b>

Note: Includes projected student yield from housing with anticipated completion in 2020 & 2021

# Enrollment Will Be Impacted By:

- Lower birth levels will result in smaller kindergarten cohorts; average K cohort for:
  - 2010 – 2020: 791 students
  - Projected 2020 – 2025 average: 758 students
  - Projected 2025 – 2030 average: 707 students
- This will impact total district enrollment as these smaller cohorts move up through the system.
- On average, the district loses students in transition to most grades (1, 2, 3, 4, 5, 6, 7, 8, 10 & 11; average gains or maintenance in transition are noted to grades 4, 9 & 12.

# Summary:

- Historically, enrollment was relatively stable between 2010 and 2017. However, decreases of 1.1 – 2.7 % were recorded in each of the last three years.
- Additional decreases are projected during the next ten years, with a loss of 984 students (9.8 %) expected by 2030, with losses projected in all grade configurations.
- Lower birth levels will lead to smaller kindergarten cohorts. This will impact total district enrollment as these smaller cohorts move up through the system.