

# LONG RANGE PLANNING STUDY

## CITY SCHOOL DISTRICT OF **NEW ROCHELLE**

2017-18

UPDATE

*A Service of  
Western Suffolk BOCES  
Division of Instructional  
Support Services  
Office of School Planning  
& Research*

# City School District of New Rochelle

## Long Range Planning Study Update Demographic and Enrollment Analysis 2017-18

### BOARD OF EDUCATION

President .....	Rachel Relkin
Vice President.....	Jeffrey Hastie
Trustees .....	Dr. Pamela M. Davis
.....	Dr. Salvador A. Fernandez
.....	Todd Kern
.....	Lianne Merchant
.....	Amy Moselhi
.....	Paul Warhit
District Clerk & Board Secretary .....	Lisdalia Saraiva
Treasurer .....	Heidi Hohlfeld, CPA

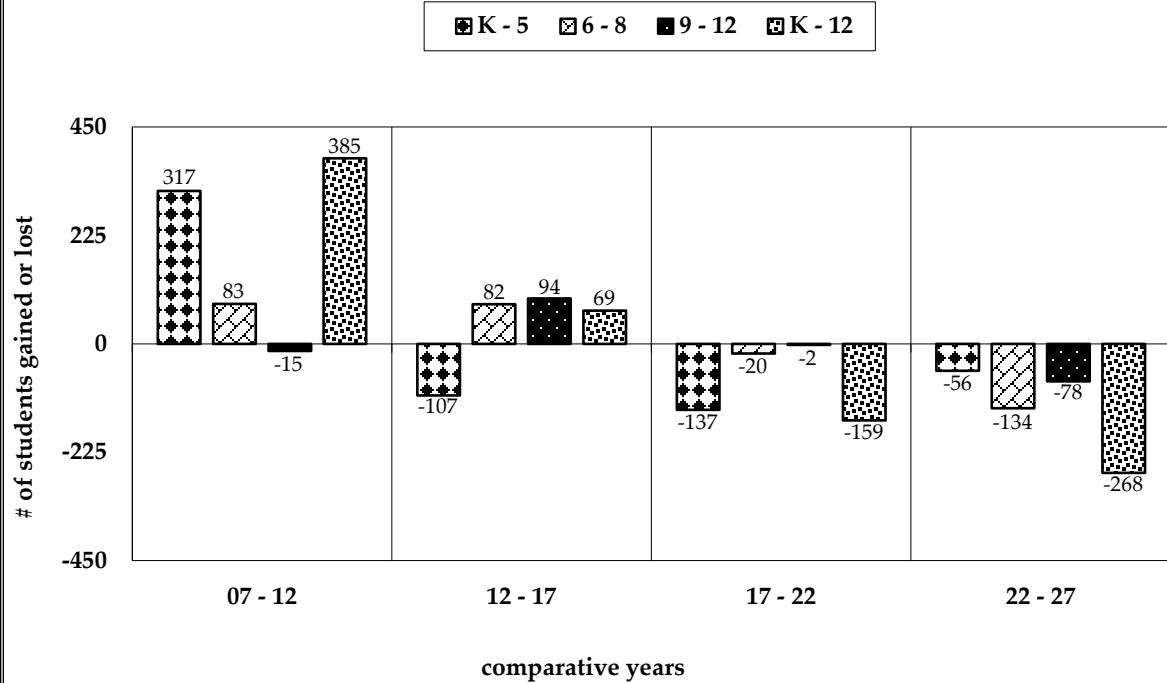
### DISTRICT ADMINISTRATION

Superintendent of Schools .....	Dr. Brian G. Osborne
Assistant Superintendent for Business & Administration .....	Jeffrey T. White, C.P.A., C.G.M.A.
Assistant Superintendent for Human Resources .....	Dr. Joseph H. Williams
Assistant Superintendent/Chief Academic Officer .....	Dr. Magda Parvey

## **BUILDING ADMINISTRATION**

New Rochelle High School..... Reginald Richardson, Principal  
..... Joseph Starvaggi, Assistant Principal  
..... Daniel Gonzalez, House I Principal  
..... Camille Edwards-Thomas, House II Principal  
..... Shomari Akil, House III Principal  
..... Shadia Alvarez, House IV Principal  
Campus Alternative High School.....Joel Fridovich, Program Administrator  
Albert Leonard Middle School..... John Barnes, Principal  
..... Daniel Goldberg, Patrick Keevins, Assistant Principals  
Isaac E. Young Middle School..... Dr. Anthony Bongo, Principal  
.....Dr. Tawanda G. Robinson, Frank Carlson, Assistant Principals  
Henry Barnard Early Childhood Center ..... Dr. Nicolas Cracco, Principal  
.....Dr. Lori E. Pisani, Assistant Principal  
Columbus Elementary School .....Michael Galland, Principal  
.....Shelli Owens, Assistant Principal  
George M. Davis, Jr. Elementary School..... Anthony Bambrola, Principal  
..... Laurie Marinaro, Assistant Principal  
Jefferson Elementary School.....Kimmerly Nieves, Principal  
..... Leann Bruno, Assistant Principal  
Trinity Elementary School..... Anthony DiCarlo, Principal  
..... Michael Hildebrand, Assistant Principal  
William B. Ward Elementary School.....Franco J. Miele, Principal  
.....Kimberly Peluso, Assistant Principal  
Daniel Webster Magnet School.....Melissa A. Passarelli, Principal  
.....Gregory A. Middleton, Assistant Principal

### City School District of New Rochelle Enrollment Change, 2007 - 2027



The City School District of New Rochelle recorded a gain of 454 students, or 4.4 percent, during the ten year historical period, with increases noted in all grade configurations. During the first half of the projection period, the elementary (K - 5) grades are expected to lose students, while the middle (6 - 8) and high school (9 - 12) grades are expected to remain stable. During the latter half of the projection period, all grade configurations are expected to lose students. The projected 2027 enrollment of 10,250 students represents a loss of 427 students, or 4.0 percent, when compared to the current enrollment.

## INTRODUCTION

At the request of the City School District of New Rochelle, the *Western Suffolk BOCES Office of School Planning and Research* conducted this study to assess recent demographic factors and enrollment trends in order to prepare projections through the year 2027.

The City School District of New Rochelle is committed to meeting the educational needs of its students. The continued monitoring of enrollment trends will give the district the data on which to consider a variety of educational issues. The foundation for this study is in keeping with the promotion of the basic district mission and philosophy.

The Board of Education and the Superintendent's efforts to plan for the future through sound management practices is fostered by comprehensive, objective data, such as contained within this *Long Range Planning Study Update*. This study serves to provide objective data that the Board of Education and administration can use in planning for the future. Planning is, however, a dynamic process that needs to reflect change. Periodic updates would allow the incorporation of subtle changes in district trends. This study provides an update to the Long Range Planning Study prepared for the district during the 2016-17 school year.

Barbara Graziano, School Planning Manager, oversaw all aspects of the study and served as principal researcher. Shu-ling Liu, Research Analyst, served as analyst and forecaster. Irene Bradley, Program Specialist, prepared the report. Denise Facilla, Educational Planning Assistant, provided research assistance and prepared the report for printing.

Dr. Brian G. Osborne, Superintendent of Schools, provided access to district records. Jeffrey T. White, Assistant Superintendent for Business & Administration, provided direction on the study scope, compiled the necessary data and acted as district liaison, thus enabling the study to accomplish its objectives.

Additionally, selected references and resources were used, as indicated below:

Brookings Institution  
Bureau of Labor Statistics  
Center for Housing Policy  
Center for Immigration Studies  
Center for Public Education  
City of New Rochelle Department of Planning  
Current Population Survey  
Education Week  
Forbes Magazine  
Freddie Mac  
Hudson Gateway Association of Realtors, Inc.  
National Alliance for Public Charter Schools  
National Association of Realtors  
National Catholic Education Association  
National Center for Education Statistics  
National Center for Health Statistics  
New York State Education Department  
New York State Office of the Aging  
New York State Office of Real Property Services  
New York State Office of Religious and Independent Schools  
New York Times  
News Migration Policy Institute  
Pew Research Center  
The Empire Center  
The State of the Nation's Housing 2017, Joint Center for Housing Studies of Harvard University  
The Wall Street Journal  
US News & World Report  
United States Customs and Border Protection  
United States Census Bureau  
U.S. Department of Education

# TABLE OF CONTENTS

## ENROLLMENT: PAST, PRESENT & FUTURE

A. Births .....	1
B. Population .....	4
C. Housing.....	9
D. Non-Public School Enrollment .....	11
E. Enrollment Projection Methodology.....	15
F. Accuracy of Previous Projections .....	17
G. District Enrollment .....	18
H. Enrollment of Grade Configurations .....	20

## APPENDICES

Appendix A - Historical and Projected Enrollment Worksheets

Appendix B - Projected Enrollment Worksheets with New Housing - PUMS Multiplier Applied

Appendix C - Enrollment Graphs

## TABLES

Table 1 - Births in the City of New Rochelle 2002 - 2015.....	3
Table 2 - Number of Home Sales and Median Price in Westchester County .....	9
Table 3 - Home Sales in the City School District of New Rochelle 2006 - 2016 .....	11
Table 4 - New and Approved Housing in the City of New Rochelle .....	12
Table 5 - Accuracy of the Western Suffolk BOCES 2016-17 Projections for 2017-18.....	17
Table 6 - City School District of New Rochelle Projected Baseline Enrollment .....	19
Table 7 - CSD of New Rochelle Projected Enrollment with New Housing - PUMS Multiplier Applied .....	20
Table 8 - City School District of New Rochelle Projected Elementary School Enrollment .....	21
Table 9 - City School District of New Rochelle Projected Elementary Sections .....	26
Table 10 - City School District of New Rochelle Projected Middle School Enrollment .....	27

## FIGURES

Figure 1 - New York State Births, 1996 - 2016.....	2
Figure 2 - Westchester County Births, 1996 - 2016 .....	2
Figure 3 - Projected Age Structure of the U.S. Population.....	5
Figure 4 - Projected Racial Structure of the U.S. Population .....	7
Figure 5 - United States Public School Enrollment by Race/Ethnicity: 2004, 2014 and 2026 .....	8
Figure 6 - Growth in Charter School Enrollment .....	14

# ENROLLMENT: PAST, PRESENT & FUTURE

*School enrollment changes occur as a result of more/fewer children being born, more/fewer families moving into a community, and/or changes in the numbers of children attending non-public or charter schools. The City School District of New Rochelle is expected to experience a decrease in district K - 12 enrollment during the projection period 2018 - 2027.*

## A. BIRTHS

Data from the *National Center for Health Statistics* indicates that there were 3,945,875 recorded births in 2016, reflecting a decrease of one percent when compared to 2015. The general fertility rate also decreased in 2016 to 62.0 births per one thousand women between the ages of 15 and 44. This is the lowest fertility rate on record and compares to 62.5 births in 2015 and 62.9 births in 2014. The peak fertility rate of 122.7 births occurred in 1957, during the Baby Boom years.

Declining births have been attributed to several factors, including lower starting salaries, significant student loan debt, the challenges young adults face with high rent costs and with saving money for the down payment required to purchase a home. These factors have resulted in many young people continuing to live with their parents and subsequently, have led to many millennials delaying marriage and childbearing. This is reflected in the average age of first birth, which has increased from 24.9 years in 2000 to 26.6 years in 2016 (latest available data), a record high for the country.

In 2016, record low birth rates were seen in all age groups under the age of 30. Women between the ages of 15 - 19 experienced the most significant birth rate decline (9 percent), when compared to the prior year. The birth rate for women in their early twenties (20 - 24) decreased 4 percent, while the birth rate for women in their late twenties (25 - 29) decreased 2 percent. However, the birth rates for women aged 30 and over increased to the highest levels since the 1960's. The birth rate for women aged 30 - 34 increased by one percent between 2015 and 2016, while the birth rates for women aged 35 - 39 and 40 - 44 increased two and four percent, respectively. Women aged 45 - 49 also had their highest birth rates since 1963, with 0.9 births per 1,000 women. This has been attributed to women delaying childbearing for various reasons.

Another factor affecting birth rates are changes in fertility patterns among minority groups. Between 2000 and 2016, fertility rates have fallen for all racial/ethnic groups. Fertility rates for Native Hawaiian or Other Pacific Islander women was the highest with 73 births per 1,000 women, followed by Hispanic women (71 births), blacks (63 births), American Indian/Alaska Native women (63 births), Asian (61 births) and whites (59 births). The latest available data (2014) has shown that among Hispanic women, Central/South American women had the highest fertility rates, with 95 births per thousand women, compared to Mexican, Puerto Rican and Cuban women, with 67, 58 and 52 births, respectively.



The non-marital birth rate for women between the ages of 15 - 44 declined for the eighth consecutive year in 2016, to 42.4 births per 1,000 women. Amongst racial and ethnic groups, black women have the greatest percentage of unwed births (69.8 percent), while the lowest percentage of unwed births (12.0 percent) are accounted for by Asian women.

Mirroring the national trend, the number of births in New York State decreased in 2016 when compared to the previous year. Provisional numbers indicate that there were 233,372 births recorded in 2016, reflecting a decrease of 1.1 percent when compared to 2015. However, this represents a decrease of 7.6 percent when compared to the number of births in 2007 (252,662 births) and a decrease of 11.5 percent when compared to births in 1996 (263,611 births).

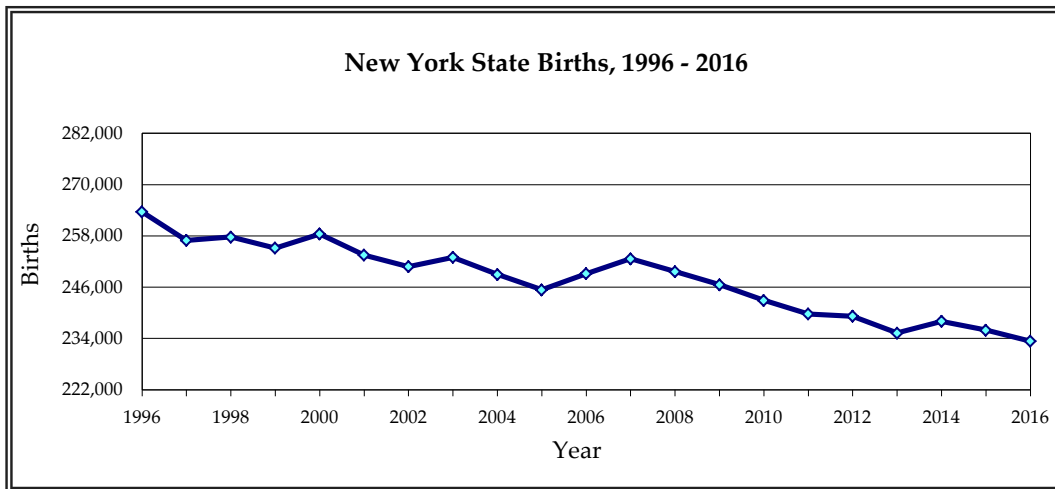


Figure 1 - New York State Births, 1996 - 2016  
 Note: 2016 data are provisional

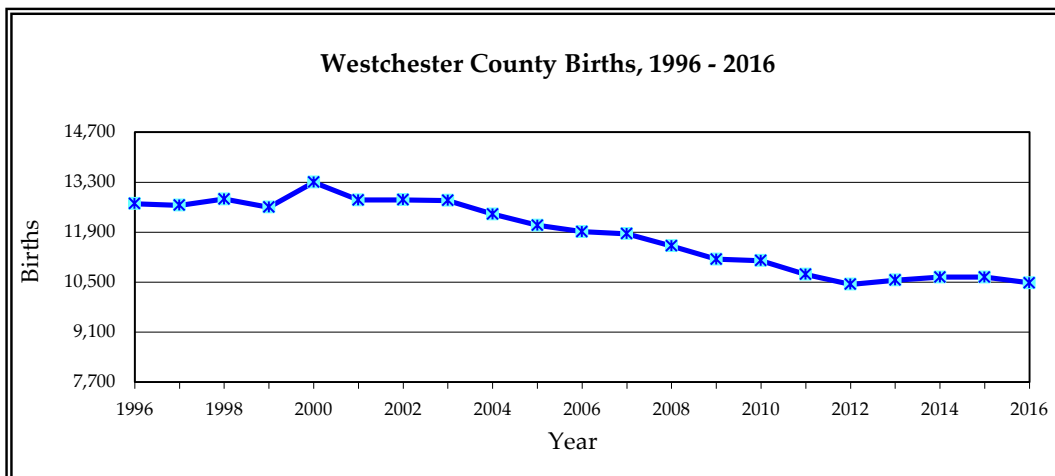


Figure 2 - Westchester County Births, 1996 - 2016  
 Note: 2016 data are provisional

Figure 2 shows births were relatively stable in Westchester County between 1996 and 1999, followed by an increase of 5.6 percent between 1999 and 2000. Births declined nearly 22 percent between 2000 and 2012, with a record low number of births recorded in 2012 (10,439 births). This was followed by relative stability during the next three years, with 10,639 births recorded in 2015. Based on preliminary data, it is estimated that there were 10,481 births recorded in 2016.

As shown in Table 1, births within the City of New Rochelle peaked in 2002 and 2003, with 1,040 and 1,015 births recorded, respectively, in those years. However, since 2003, the level of births has been below 1,000, ranging within 867 - 996 each year (birth data for 2016 and 2017 is not yet complete).

**Table 1 - Births in the City of New Rochelle 2002 - 2015**

<b>Year</b>	<b>City of New Rochelle</b>
2002	1,040
2003	1,015
2004	959
2005	996
2006	934
2007	912
2008	963
2009	972
2010	986
2011	898
2012	896
2013	914
2014	867
2015	912

Source: NYS Dept. of Health

## B. POPULATION

The *Census Bureau* reported that there were an estimated 323.1 million people living in the United States in July 2016, reflecting an increase of 14.4 million people, or 4.7 percent, since the 2010 Census. However, this represents a year-to-year population increase of 0.7 percent, marking the slowest growth since the *Great Depression*. This slowdown is attributed to increased deaths amongst baby boomers and fewer births amongst younger generations. *Census Bureau* projections indicate that the population will continue to grow more slowly between 2010 and 2060, when compared to 1950 - 2010; an increase of 98.1 million people is expected by 2060, when 416.8 million people are projected to reside in the United States.

New York State's population totaled approximately 19.7 million people on July 1, 2016, reflecting a gain of 367,187 people, or 1.9 percent, since the 2010 Census. However, in 2016 New York experienced a net migration loss of 72,889 people (between July 2015 and July 2016), meaning more residents moved to other states than moved in. In 2016, New York's domestic migration loss was significantly greater than any other state (-191,367), losing more residents to domestic migration than Illinois (-114,144) and California (-109,023), the next two states with the greatest losses. Recent domestic migration losses in New York have been partially offset by international migration; nearly 700,000 international immigrants have moved into the state since 2010. The rise in population was due to natural increases (more births than deaths). However, it should be noted that gains through natural increase have declined since 2010. New York remains the fourth most populous state in the country, succeeding California (39.3 million people), Texas (27.9 million people) and Florida (20.6 million people). Prior to 2014, New York had been the third most populous state.

Between 2010 and 2016, Westchester County recorded a gain of 25,429 people, or 2.7 percent. As seen in New York State, Westchester County has been experiencing losses due to domestic migration; however, those losses have been offset by international migration and natural increases. Westchester County ranks seventh in population among New York's 62 counties, with a population of nearly 975,000 people.

Between 2010 and 2016, the City of New Rochelle and the City School District of New Rochelle experienced a population increase, with a gain of 2,495 residents (3.2 percent); an estimated 79,557 residents were living within the district in 2016.

*Census Bureau* data indicates that the demographics of the United States are shifting as the populace ages and becomes more diverse. The age structure of the nation's population has been impacted by the oldest of the baby boomers (those born between 1946 and 1964) beginning to turn 65 in 2011. The youngest baby boomers will be turning 65 in 2029. The ethnic structure of the population has been impacted by the nearly 59 million immigrants who have entered the United States during the last 50 years.

As shown in Figure 3, the 65 and over age segment of the population in the United States comprised 13 percent of the total population in 2010. It is forecasted that growth in this age segment will nearly double by 2060, when it is projected that the 65 and over age segment will comprise nearly 24 percent of the population. However, the percentage of residents under 20 years of age is projected to decrease from nearly 27 percent of the population in 2010 to 22 percent in 2060. There were an estimated 82.8 million younger adults aged 20 - 39 in the United States in 2010. This is the largest number in that age group in the last thirty years; however, younger adults now comprise a smaller share of the population (approximately 27 percent) than they did in 1980 (approximately 32 percent); this segment is projected to further decrease to 24 percent by 2060. The 40 - 64 age segment is also expected to see a decreasing share of population through 2060, declining from 33 percent in 2010 to approximately 30 percent in 2060.

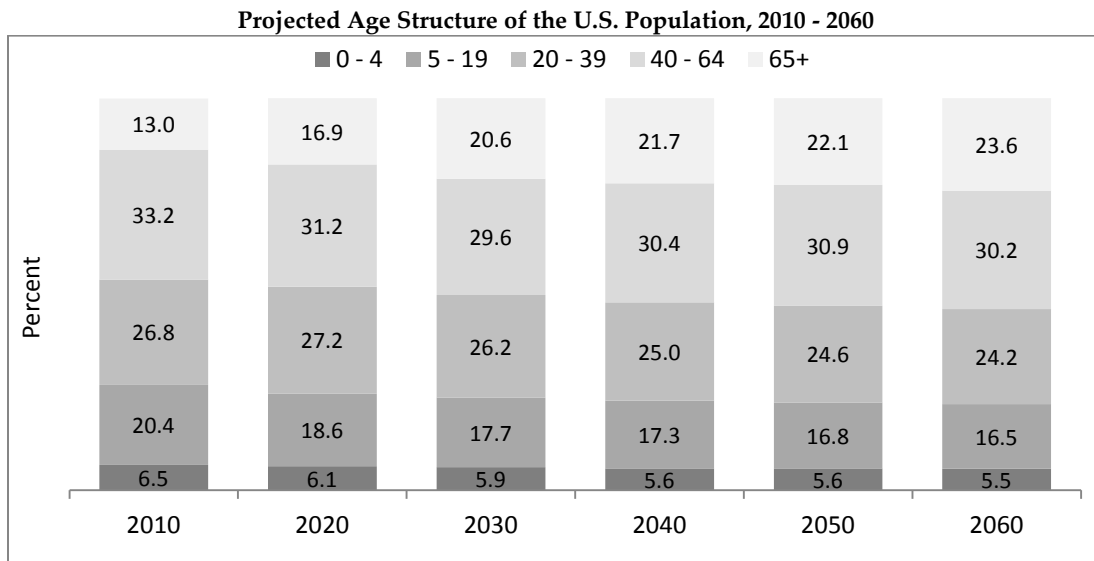


Figure 3 - Projected Age Structure of the U.S. Population  
Source U.S. Census Bureau

An aging population is also evident in New York State. This has been attributed to a low birth rate and the inability to attract and retain young people with families. According to the *New York State Office of the Aging*, the portion of the population age 65 and over is forecasted to grow from 13.5 percent of the population in 2010 to 21.0 percent of the population in 2040.

In Westchester County, population trends mirror those of New York State and the nation. Between 2010 and 2015, the 19 and under segment decreased from 26.5 to 26.0 percent of the population; however, the 65-and older segment grew from 14.7 to 15.3 percent during the same period. The median age in Westchester County has increased from 40.0 years in 2010 to 40.3 years in 2015; this is greater than the New York State median age of 38.1 years.

The age structure of the resident population in the City School District of New Rochelle has remained relatively stable between 2010 and 2015; approximately 25.0 percent of residents are aged 19 years or younger, 26.0 percent are of young adult age (20 - 39), 34 percent of residents are aged 40 - 64 and 15

percent are aged 65 or older. The median age in the City School District of New Rochelle was approximately 39.3 years in 2015.

Immigration is the driving force behind the changing face of America. In 1990, foreign-born residents accounted for nearly 8 percent (20 million people) of the population in the United States. As of 2015, 13.2 percent of the nation’s population was foreign-born. By 2025, the *Census Bureau* projects that one in seven people will be foreign-born (52 million people) and by 2060, one in five people are expected to be foreign-born (78 million people). A majority of the foreign-born population have immigrated from Latin America and Asia, with the greatest numbers settling in California, Nevada, Texas, Florida and New York. Immigrants from Latin America comprised approximately 52 percent (21.6 million people) of the foreign-born population in 2015, while Asians accounted for nearly 30 percent (12.4 million people) of the foreign-born population. Europeans accounted for almost 12 percent of the foreign-born population, with 4.8 million people in 2015. This is a significant shift since 1960, when 75 percent of immigrants in the United States had been born in Europe and settled primarily in the Northeast and Midwest. In 1960, nine percent of the foreign-born population was from Latin America and five percent was from Asia.

In 2012, 4.5 million children born in the United States lived with at least one foreign-born parent, resulting in 1 in 4 children under the age of 18 having at least one foreign-born parent. The *Census Bureau* projects that by 2050, international migration will exceed natural increase as the leading cause for population growth; this will be the first time since 1850 that natural increase is not the main source of population growth.

In New York State, the foreign-born population increased by 5.8 percent between 2010 and 2015, representing almost 23 percent of the population in 2015. In Westchester County, the foreign-born population increased 7.2 percent between 2010 and 2015, and represents approximately 25.3 percent of the population. According to *Census Bureau* estimates, the foreign-born population in the City School District of New Rochelle represented approximately 29.1 percent of the resident population in 2015.

Immigration has resulted in a transformation of the ethnic composition of the population in the United States. In 2010, approximately 64 percent of the population was white, down from 85 percent in 1960. The country’s white population is forecasted to become “majority minority” in 2044; by 2060, the combined minority population is forecasted to comprise approximately 56 percent of the total population, compared to 36 percent in 2010. As shown in Figure 4, Hispanics were the largest minority group in 2010, accounting for approximately 16 percent of the population, followed by blacks (12.2 percent), Asians (5.8 percent) and those identifying themselves as two or more races (1.9 percent). However, Asians are the fastest growing minority group, growing by 8.3 percent between 2010 and 2015.

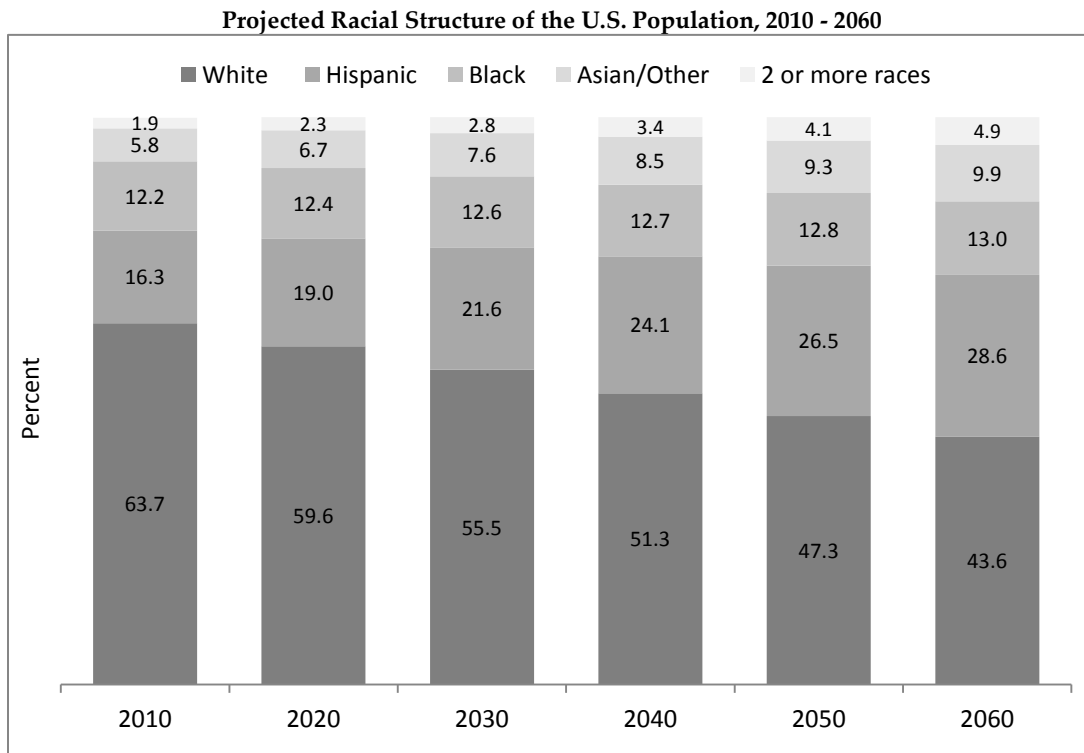


Figure 4 - Projected Racial Structure of the U.S. Population  
Source U.S. Census Bureau

The *Census Bureau* reported that a vast portion of the baby boomers are non-Hispanic white. It is anticipated that as the number of baby boomers declines as a result of mortality, the United States will see a significant decrease in the percentage of non-Hispanic whites. This factor, as well as immigration and births to minority populations, are expected to lead to an increasingly diverse population.

In New York State, whites made up approximately 57 percent of the population in 2015, down from more than 58 percent in 2010, while minorities comprised 43 percent of state residents. Hispanics are the largest minority group at approximately 18 percent, followed by blacks (14.4 percent), Asians (8.7 percent) and those identifying themselves as two or more races (1.7 percent). Currently four states are “majority-minority” states: California, Hawaii, New Mexico and Texas.

According to data from the Census Bureau, the ethnic composition within Westchester County has also shifted. The Hispanic segment of the population increased from 21.8 percent in 2010 to 23.3 percent in 2015. The Asian segment also increased during the same period, growing from 5.9 to 6.2 percent, while the white population decreased from 57.4 to 55.4 percent. The black segment remained relatively stable at 13.4 percent, during the same period.

In 2015, within the City School District of New Rochelle, approximately 47 percent of residents were white, 28 percent were Hispanic, 18 percent were black and five percent were Asian; 1.9 percent of residents identified themselves as two or more races in 2015.

The *National Center for Education Statistics* reported that beginning in the 2014-15 school year, there were fewer white students than minority students enrolled in the United States public school system. As shown in Figure 5, in 2004, white students comprised approximately 58 percent of the country’s public school enrollment. By the fall of 2014 the number of white students in public schools decreased to 49.5 percent, with a further decrease anticipated by 2026. In 2026, minority students are expected to comprise approximately 55 percent of public school enrollment and white students are projected to comprise 45 percent.

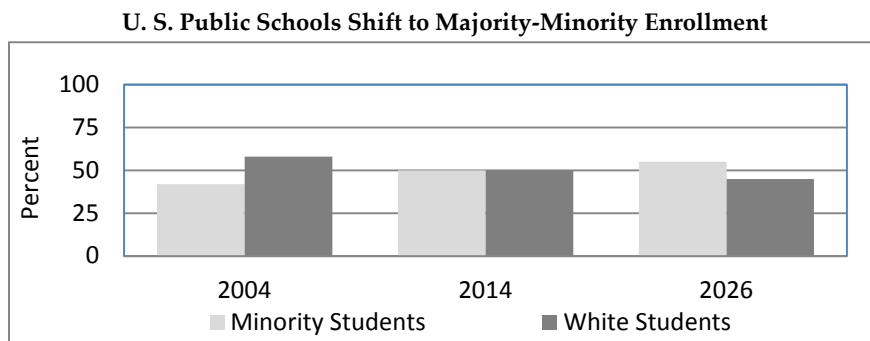


Figure 5 - United States Public School Enrollment by Race/Ethnicity: 2004, 2014 and 2026  
Source: National Center for Education Statistics

The *United States Customs and Border Protection* reported that a growing number of unaccompanied minor children (UAC) aged 0 - 17 years old have entered the United States on humanitarian grounds in recent years (2011 - 2016); this influx reached record highs in FY2014 (fiscal year Oct. 1 - Sept. 30), when over 68,500 children were apprehended, reflecting a significant increase since FY2011 when approximately 16,000 children were reportedly apprehended. In FY2015, the flow of UACs decreased when it was reported that nearly 40,000 children were apprehended; however, during FY2016 close to 60,000 children were reportedly apprehended, reflecting a year-to-year increase of nearly 50 percent. During the first eight months of FY 2017, there has been a 19 percent decrease of UAC arrivals; however, the number of parents or guardians traveling with children (family units) who were apprehended at the border was up 37 percent over same period during the previous year. Minors from the countries of El Salvador, Guatemala and Honduras have accounted for the majority of the growth as they flee from high crime, gang violence and poverty in their home countries.

## C. HOUSING

Economists and housing market experts anticipate that the housing market will remain strong through 2018, spurred by a growing U.S. economy, low unemployment rates and rising consumer confidence. According to the *Census Bureau*, residential building permits in November 2017 were up 3.4 percent when compared to the same month a year ago and residential housing starts increased 12.9 percent during the same period. The median sale price for new homes rose to a record high of \$328,500 in September (2017).

The return of first time home buyers is another factor that is positively impacting the housing market. The postponement in homeownership by younger buyers had been attributed to several factors, including tighter lending standards, high levels of student loan debt, difficulties coming up with down payments, limited new construction of starter homes and lifestyle changes, which included delaying marriage and children. According to the *National Association of Realtors*, the share of first time home buyers fell to 32 percent in 2015, down from the historical average of approximately 40 percent. However, last year (2016) the average increased to 35 percent, as more millennials made the decision to become homeowners. Many builders are catering to this demographic population by building smaller homes at lower, more affordable price points.

In the fourth quarter of 2017, housing turnover in Westchester County remained stable (gain of 0.4 percent), when compared to the same quarter in the prior year. During the same period, the median sale price (for single family homes) increased, with a quarterly year-to-year gain of 6.1 percent. The growth in the median sale price has been attributed to a tighter supply of available inventory.

**Table 2 - Number of Home Sales and Median Price in Westchester County**

County	2017 Q4		2016 Q4		Change	
	# Sales	Median Price	# Sales	Median Price	# Sales	Median Price
<b>Westchester County</b>	1,438	\$600,000*	1,432	\$565,500*	0.4%	6.1%

Source: Hudson Gateway Association of Realtors, Inc.

\*Median Price for Single Family Homes

Although the outlook for the housing market generally remains positive, some economists have expressed concerns regarding factors which could negatively impact the housing forecast. Growing demand and a lack of inventory will continue to push prices higher. As prices increase, starter homes may become unaffordable for many first time home buyers. The *National Association of Realtors* reported that housing affordability has declined 7.3 percent between June 2016 and June 2017. These factors will impact first-time homebuyers attempting to enter the real estate market.



According to *Census Bureau* data, more United States households are currently renting than at any other time in the past fifty years. The share of households renting their home has grown during the last ten years from 31.2 percent in 2006 to 36.6 percent in 2016. This is reflective of several factors, including the long term effects of the housing crash during the *Great Recession*, and the challenges millennials face as they enter the housing market. In 2016, 65 percent of households headed by people under the age of 35 were renting as compared to 57 percent in 2006. This compares to the percentage of renters in the 35 - 44 age segment (41 percent), the 45 - 64 age segment (28 percent) and the 65 and over age segment (21 percent) in 2016.

The *Pew Research Center* reported that all major racial and ethnic groups were more likely to rent when compared to a decade ago; however, black and Hispanic households are nearly twice as likely to rent as white households. As of 2016, 58 percent of black household heads and 54 percent of Hispanic household heads were renting, compared to 28 percent of white households. This growing demand for rentals has strengthened the construction of multifamily housing. During the first quarter of 2017, completions of apartment units were up 8.9 percent when compared to the first quarter of 2016.

The *Joint Center for Housing Studies of Harvard University* reported that the overall number of cost-burdened owner households (those paying more than 30 percent of their income for housing) in 2015 was 18 million, accounting for 24 percent of owner occupied households. This remains below the number of cost-burdened renter households, which was 21 million in 2015, accounting for 48 percent of all renters. This is a significant increase since 2008, when there were reportedly 17.7 million cost-burdened renter households. This increase is attributed to a lack of affordable housing options in many communities.

The *Census Bureau* reported that the homeownership rate for the second quarter of 2017 was 63.7 percent; this is a 0.8 percent increase from the second quarter of 2016, when the homeownership rate was at a 50-year low. Among ethnic groups, homeownership rates for black and Hispanic households continue to remain well below the homeownership rate for whites, resulting in a gap between white and minority ownership. In the second quarter of 2017, the homeownership rates for the black and Hispanic segments of the population were 42.3 percent and 45.5 percent, respectively, compared to 72.2 percent for the white segment of the population.

As shown in Table 3, housing turnover in the City School District of New Rochelle has fluctuated, but overall increased since the market dropped to a historical (2006 - 2016) low in 2009 (243 units); there were 504 sales recorded in 2016, more than double the number in 2009. In 2016, the median sale price was \$595,250 - the highest of the last nine years.

**Table 3 - Home Sales in the City School District of New Rochelle 2006 - 2016**

<b>Year</b>	<b>Number Sold</b>	<b>Median Price</b>
2006	527	\$645,000
2007	474	\$628,650
2008	343	\$583,000
2009	243	\$555,000
2010	343	\$575,000
2011	318	\$529,501
2012	351	\$535,000
2013	442	\$542,250
2014	453	\$575,000
2015	521	\$585,000
2016	504	\$595,250

Source: NYS Office of Real Property Services

Housing data for the area encompassed by the City School District of New Rochelle indicated that in 2015, 94.5 percent of the total housing was occupied and 5.5 percent was vacant. Occupied housing can be inhabited by the owner of the house or a renter. Rental property generally attracts a more transient population with fewer school-aged children than owner occupied housing. In 2015, 49.6 percent of housing in the district was owner occupied and 50.4 percent was renter occupied.

The Planning and Development Department of the City of New Rochelle was contacted regarding the status of building projects currently under construction, as well as any new developments before the planning board. As shown in Table 4, the City reported that 651 residential units are currently under construction and 784 have been approved. As reported by the City, 674 units are anticipated to have a C/O in 2018; and 761 units are anticipated to have a C/O in 2019.

**Table 4 - New and Approved Housing in the City of New Rochelle**

<b>Project Name</b>	<b>Location</b>	<b>Type of Units</b>	<b>Anticipated C/O</b>
<i>UNDER CONSTRUCTION</i>			
Beckwithe Pointe	700 Davenport Avenue	72 three-BR condos	2018
Millenia	22 Burling Lane	27 S; 65 one-BR; 18 two-BR = 110 apartments	2018
Print House	165 Huguenot	24 S; 36 one-BR; 11 two-BR = 71 apartments	2018
RXR Realty	587 Main Street	54 S; 125 one-BR; 101 two-BR = 280 apartments	2018
63-77 Maple Avenue	63-77 Maple Avenue	6 four-BR (two-family attached)	2018
<b>251 North Avenue</b>	251 North Avenue	13 S; 92 one-BR; 7 two-BR = 112 apartments	2019
<i>APPROVED</i>			
<b>NewRo Studios</b>	11 Burling Lane	73 studio apartments	2019
Young Companies	North Avenue East	20 S; 59 one-BR; 28 two-BR; 7 three-BR = 114 apartments	2019
Young Companies	North Avenue West	16 S; 39 one-BR; 17 two-BR; 3 three-BR = 75 apartments	2019
10 Commerce Drive	10 Commerce Drive	53 S; 64 one-BR; 55 two-BR = 172 apartments	2019
<b>14 LeCount Place</b>	14 LeCount Place	63 S; 121 one-BR; 31 two-BR = 215 apartments	2019
164 Union Avenue	164 Union Avenue	10 S; 55 one-BR (30 units are age-restricted); 10 two-BR = 75 apartments	2018
393 Huguenot	393 Huguenot	20 S; 37 one-BR; 3 two-BR = 60 apartments	2018
<b>TOTAL = 1,435 units</b>		<b>373 S; 693 one-BR; 281 two-BR; 82 three-BR; 6 four-BR</b>	

**Bold** = New project since last report

## D. NON-PUBLIC SCHOOL ENROLLMENT

The *Census Bureau* reported that private school enrollment in the United States decreased by more than 160,000 students in grades K - 12 between 2010 and 2015. There were 5.5 million students enrolled in non-public school in 2015 (latest available data); projections suggest a further decrease to 5.1 million students in 2025. However, if *School Choice* is expanded by the *U.S. Department of Education* in 2018 as proposed, this projection may be skewed.

The *Census Bureau* reported that in 2015, private schools in New York enrolled approximately 413,375 students (13.2 percent of all New York State school-age children) in grades K - 12. This is a 16.5 percent decrease since 2000, when approximately 495,000 students, or nearly 15 percent of all New York State school-age children, attended private schools. Between 2000 and 2016, the percentage of all school age children attending private schools in Westchester County remained stable at 13.4 percent.

The City School District of New Rochelle reported that 1,751 district resident students (14.1 percent) are currently attending private schools. This is a decrease since 2007, when 2,246 students, or 18.0 percent of district resident students, attended private schools.

In April 2016, New York State passed legislation establishing a new *Office of Religious and Independent Schools*. The proposed state budget for non-public schools was \$283 million, including additional funding for increased security and for the *Comprehensive Attendance Policy* program.

Currently, *School Choice* has been established in 31 states and offers a variety of programs that fall into several categories, including Education Savings Accounts (ESAs), School Vouchers, Tax-Credit Scholarships and Individual Tax Credits and Deductions. *School Choice* options also include charter schools, magnet schools, inter/intra-district public school choice, homeschooling, online learning, customized learning, and town tuitioning. *School Choice* provides an opportunity for parents to choose a school that potentially offers services that best meet their child's needs. The United States proposed federal budget for fiscal year 2018 recommends an increase of 1.4 billion dollars to be allocated for *School Choice* programs. Currently, a universal program does not exist; therefore there are variations in regards to what is offered in each state. During the 2016-17 school year more than 446,000 ESAs, vouchers and tax-credit scholarships were awarded through state funds generally disbursed by school districts.

The *National Catholic Education Association* reported that Catholic school enrollment in the United States peaked in the early 1960's, when approximately 5.2 million students were enrolled in nearly 13,000 Catholic schools. By 1990, Catholic school enrollment had decreased by approximately 52.0 percent to 2.5 million students, enrolled in 8,719 Catholic schools. Catholic school enrollment has further decreased, with less than 1.9 million students enrolled in 6,429 Catholic schools during the 2016-17 school year; this represents a decrease of 63 percent between the early 1960's and 2016-17. This also represents a year-to-year loss of 96 Catholic schools, when compared to the 2015-16 school year. However, it should be noted that this total includes some schools that were consolidated, some schools that were reopened as new entities and 20 newly constructed Catholic school buildings.

Enrollment declines in Catholic schools have been attributed to several factors, including rising tuition costs, an increased number of charter schools, an increased number of students being homeschooled or opting for *School Choice* and the lasting impacts from the *Great Recession* (2007 - 2009), as families were affected by job losses, lower wages and salary reductions.

The expansion of charter schools has led to a decrease in the number of students enrolled in private schools, essentially because charter schools offer a tuition-free alternative to traditional public school settings, while providing the individualized attention that private schools offer. Presently, 43 states and Washington D.C. have passed laws regulating charter schools. According to the *National Alliance for Public Charter Schools*, it is estimated that there are 6,900 charter schools in the United States, housing approximately 3.1 million students. This is an increase from 1.2 million students in 2006 and 400,000 students in 2000. However, despite the opening of new charter schools, many charter schools have also closed. These closures have been attributed to low enrollment, financial issues and low academic performance as reported by *Education Week*.

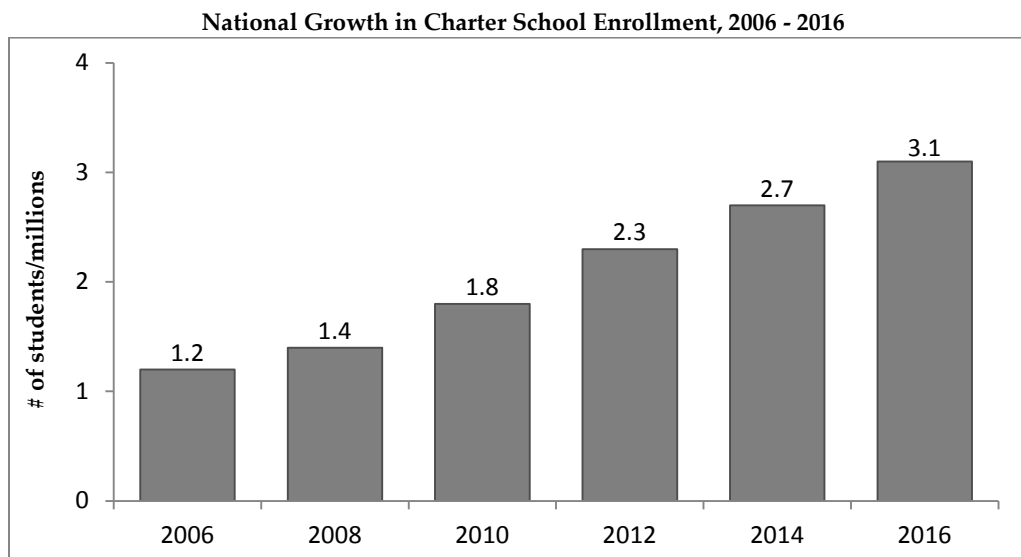


Figure 6 - Growth in Charter School Enrollment  
 Source: National Alliance for Public Charter Schools

The *National Alliance for Public Charter Schools* reported that there were over 132,000 students enrolled in 267 charter schools throughout New York State during the 2016-17 school year. There are a total of 308 approved charter schools in New York for the 2017-18 school year; however, many are not yet in operation. At the present time, there are two charter schools in operation in Westchester County, located in Yonkers and Mount Vernon.

An increase in homeschooling has also contributed to the decline in private school enrollment. During the economic recession in the late 2000's, more families with non-working adults who would have previously sent their children to a private school opted to homeschool their children. Estimates indicate that over 2.3 million children were homeschooled during the 2016-17 school year; this is an increase from 1.1 million students in 2003.

## E. ENROLLMENT PROJECTION METHODOLOGY

The *Cohort Survival Technique* was used to project the district's enrollment patterns for the next ten years. Three basic inputs were necessary:

1. Actual enrollment by grade for 2007 - 2017 for the district [Appendix A-2] and each school [A-8, A-10, A-12, A-14, A-16, A-18, A-20, A-23, A-24, A-25].
2. Grade-to-grade retention (migration) ratios for each two-grade transition to grades 1 - 12 for the past ten years for the district [Appendix A-2] and each school [Appendix A-8, A-10, A-12, A-14, A-16, A-18, A-20, A-23, A-24, A-25].
3. Projected kindergarten entering cohorts based on the number of live births in Westchester County and the City of New Rochelle, five years before each year projected [Appendix A-4].

The *Cohort Survival Model* takes into consideration the normal community processes that affect school enrollment, which include:

1. The number of births and fertility rates
2. Normal in and out migration
3. Transfers to and from non-public schools
4. Population variations
5. Resident family characteristics

The enrollment projections contained within this report are based on assumptions generated through the demographic analysis. *This analysis led to the following assumptions:*

1. Population will continue to grow due to new residential development and the increased turnover of existing housing within the district. The turnover of approximately 350 - 500 homes each year is anticipated to continue.
2. Future kindergarten classes are anticipated to be maintained at levels close to those seen during the last two years, relative to housing turnover and changes in population.
3. Non-public school enrollment will remain at approximately 14 -16 percent of district resident students, as has been experienced in recent years.

The *Cohort Survival Model* is very accurate in forecasting future enrollment patterns, but the occurrence of certain conditions would warrant modifications in these projections. *These conditions include:*

- A level of new housing activity which is significantly higher or lower than that experienced by the district during the past three years.
- A significant change in the level of housing turnover from activity during the past three years.
- Expansion, consolidation, closing or the establishment of new non-public schools.
- Economic conditions that affect employment, finance, and housing in a manner dissimilar to the past three - five years.
- Major sociological changes or changed values/attitudes affecting anticipated family size and birthrate.
- Household characteristics that significantly differ from the past three - five years, including number of persons per household and age of household occupants.

It is important for the reader to understand the nature of enrollment projections. Regardless of the methodology employed to produce projections, *all outcomes fall into three categories of reliability:*

*Category 1* - Those projections based on students already enrolled in the system are the most reliable projections.

*Category 2* - Those projections based on documented births are slightly less reliable than those of Category 1.

*Category 3* - Those projections based on estimates of future births are the least reliable.

Therefore, the most reliable projections are those calculated for the periods closest in time. Projections for periods further out in time are less reliable, particularly those beyond five years from the year of the study. The five-year period (2018 - 2022) projections are those best used in district planning and decision making. That is because this period consists mainly of Category 1 projections.

It is noted that the overall enrollment projections produced by Western Suffolk BOCES generally fall within a 4 percent margin of error. The greatest discrepancies in projections occur in the smallest subsets of those projections. For example, the projections for the district as a whole are likely to be the most accurate, while the projection of a building's particular grade level in a specific year is likely to be the least accurate. It is advised that updates to projections be continued on a periodic basis to maintain modifications warranted by subtle shifts in migration trends and demographic factors.

## F. ACCURACY OF PREVIOUS PROJECTIONS

A comparison was made between the enrollment projections presented in the 2016-17 Western Suffolk BOCES study and the actual enrollment observed in the 2017-18 school year. As shown in *Appendix A-1* and Table 5, the 2016-17 study projected the 2017-18 K - 12 enrollment at 10,683 students, while there were actually 10,677 students enrolled. This projection was within six students of the actual enrollment, reflecting accuracy within 0.1 percent.

The projections for each grade level showed variations ranging from 1 - 21 students of the actual enrollments. The K - 5 grade configuration was projected within three students, or 0.1 percent, the 6 - 8 grade configuration was projected within 18 students, or 0.7 percent and the 9 - 12 grade configuration, was projected within nine students, or 0.3 percent, of the actual enrollment.

An inspection of the variations in the enrollment, particularly in the grade-to-grade migrations, revealed fluctuations. On average, the district gains or maintains students in transition to grades 1, 4, 5, 7, 8, 9 and 12, and loses students in movement to grades 2, 3, 6, 10 and 11.

**Table 5 - Accuracy of the Western Suffolk BOCES 2016-17 Projections for 2017-18**

<b>Grades</b>	<b>2017-18 Actual</b>	<b>2017-18 Projected</b>	<b>Difference</b>	<b>Accuracy</b>
<b>K - 12</b>	10,677	10,683	6	100.1%
<b>K - 5</b>	4,768	4,765	-3	99.9%
<b>6 - 8</b>	2,426	2,444	18	100.7%
<b>9 - 12</b>	3,483	3,474	-9	99.7%



## G. DISTRICT ENROLLMENT

*The City School District of New Rochelle educates students within grades K - 12 in eleven district buildings. The elementary grades (K - 5) are housed in seven buildings: Henry Barnard Early Childhood Center, Columbus Elementary School, George M. Davis, Jr. Elementary School, Jefferson Elementary School, Trinity Elementary School, William B. Ward Elementary School and Daniel Webster Magnet School. The middle grades (6 - 8) are housed in two buildings: Albert Leonard Middle School and Isaac E. Young Middle School and the secondary grades (9 - 12) are housed at New Rochelle High School and Campus Alternative High School.*

District enrollment [Appendix A-3, A-6] consisted of 10,223 students in grades K - 12 in 2007. Gains in six of the next seven years led to the historical peak enrollment of 10,708 students in 2014. Subsequently, losses in two of the last three years resulted in the current enrollment of 10,677 students in 2017. This represents a gain of 454 students, or 4.4 percent, during the historical period.

Losses are expected in seven of the next ten years. The forecasted 2027 enrollment of 10,250 students represents a loss of 427 students, or 4.0 percent, when compared to the current enrollment.

*The projected enrollment can be attributed to several factors:*

- ☞ **First**, the kindergarten enrolled between 700 - 846 students each year between 2007 and 2017. There are 781 kindergarten students enrolled in 2017-18. Kindergarten enrollment is expected to remain below 800 students during the projection period, ranging within 764 - 791 students per year through 2027 [Appendix A-4].
- ☞ **Second**, the incoming kindergarten class was larger than the graduating twelfth grade class of the previous year in seven of the last ten years. This trend is expected to reverse during the projection period, as larger twelfth grade classes will be replaced by smaller incoming kindergarten cohorts; losses of between 5 - 136 students are expected each year due to this displacement [Appendix A-7].
- ☞ **Third**, on average, the district gains or maintains students in transition to grades 1, 4, 5, 7, 8, 9 and 12, and loses students in movement to grades 2, 3, 6, 10 and 11 [Appendix A-2].
- ☞ **Fourth**, the average grade level size increased in grades K - 8, 10 and 12 during 2012 - 2017 as compared to 2007 - 2012. Grade level size decreases are expected in grades K - 6 during 2017 - 2022. Grade level size decreases are expected in grades K - 11 during 2022 - 2027 [Appendix A-7].

Table 6 presents the current and projected baseline enrollment through 2027 for the district and each grade configuration. It is shown that the elementary (K - 5) and high school (9 - 12) grade configurations are expected to be at their projection period peak enrollments in 2019, while the middle (6 - 8) grades are expected to enroll the greatest number of students in 2018. District enrollment is expected to be at its peak in 2019, when 10,688 students are anticipated; this represents an increase of eleven students, when compared to the current enrollment.

**Table 6 - City School District of New Rochelle Projected Baseline Enrollment**

<b>Year</b>	<b>K - 5</b>	<b>6 - 8</b>	<b>9 - 12</b>	<b>Total K - 12</b>
<b>Actual 2017</b>	4,768	2,426	3,483	10,677
<b>Projected 2018</b>	4,751	2,428*	3,508	10,687
<b>2019</b>	4,758*	2,329	3,601*	10,688*
<b>2020</b>	4,671	2,382	3,572	10,625
<b>2021</b>	4,612	2,409	3,537	10,558
<b>2022</b>	4,631	2,406	3,481	10,518
<b>2023</b>	4,625	2,314	3,518	10,457
<b>2024</b>	4,606	2,269	3,538	10,413
<b>2025</b>	4,605	2,281	3,450	10,336
<b>2026</b>	4,586	2,286	3,477	10,349
<b>2027</b>	4,575	2,272	3,403	10,250

\* = denotes peak enrollment during 2018 - 2027

Table 7 presents projected enrollment through 2027, including the anticipated student yield from new and approved housing within the City of New Rochelle. The PUMS (Public Use Microdata Sample) multiplier was applied in order to develop student generation rates. The PUMS multiplier was developed by WXY Consultants using Census based data covering a geographic area in proximity to New Rochelle and is customized to developments similar in nature to those being proposed in the New Rochelle community. The projected yield from the new and approved housing (as listed on p.12 of this document) is 67 students.

It is shown that that the elementary (K - 5) and high school (9 - 12) grade configurations are expected to be at their projection period peak enrollments in 2019 and the middle (6 - 8) grades are expected to enroll the greatest number of students in 2018. District enrollment is expected to be at its peak in 2019, when 10,728 students are anticipated; this represents an increase of 51 students, when compared to the current enrollment [Appendix B-1, B-2].

**Table 7 - CSD of New Rochelle Projected Enrollment with New Housing - PUMS Multiplier Applied**

Year	K - 5	6 - 8	9 - 12	Total K - 12
<b>Actual</b> 2017	4,768	2,426	3,483	10,677
<b>Projected</b> 2018	4,752	2,428*	3,508	10,688
2019	4,785*	2,335	3,608*	10,728*
2020	4,713	2,394	3,585	10,692
2021	4,646	2,424	3,550	10,620
2022	4,657	2,426	3,495	10,578
2023	4,644	2,335	3,537	10,516
2024	4,617	2,292	3,559	10,468
2025	4,609	2,303	3,477	10,389
2026	4,586	2,305	3,508	10,399
2027	4,575	2,283	3,436	10,294

\* = denotes peak enrollment during 2018 - 2027

## H. ENROLLMENT OF GRADE CONFIGURATIONS

### ELEMENTARY GRADES (K - 5) ENROLLMENT *[Appendix A-3, A-6]*

The elementary enrollment consisted of 4,558 students in grades K - 5 in 2007. Gains in seven of the next eight years resulted in the historical peak enrollment of 4,929 students in 2015. Subsequently, losses in each of the last two years led to the current enrollment of 4,768 students in 2017; this represents a gain of 210 students, or 4.6 percent, during the historical period.

Losses are projected in seven of the next ten years, leading to the forecasted 2027 enrollment of 4,575 students; this represents a loss of 193 students, or 4.0 percent, when compared to the current enrollment.

Table 8 presents the current and projected baseline enrollment through 2027 in the district’s elementary schools. It is shown that Barnard, Davis, Jefferson and Daniel Webster Elementary Schools are expected to be at their projection period peak enrollments in 2018, while Columbus, Trinity and Ward Elementary Schools are expected to enroll the greatest numbers of students in 2019. Note: Please refer to Appendix B for projected elementary school enrollments which include anticipated student yields from new and approved housing.

**Table 8 - City School District of New Rochelle Projected Elementary School Enrollment**

Year	Henry Barnard (K - 2)	Columbus (K - 5)	George M. Davis (K - 5)	Jefferson (K - 5)	Trinity (K - 5)	William B. Ward (K - 5)	Daniel Webster (K - 5)	Total K - 5
<b>Actual 2017</b>	274	802	734	556	848	1,057	497	4,768
<b>Projected 2018</b>	285*	811	709*	560*	836	1,058	492*	4,751
<b>2019</b>	281	820*	704	555	845*	1,071*	482	4,758*
<b>2020</b>	278	789	698	545	825	1,060	476	4,671
<b>2021</b>	276	763	694	530	821	1,063	465	4,612
<b>2022</b>	277	775	709*	521	821	1,064	464	4,631
<b>2023</b>	276	770	702	531	822	1,058	466	4,625
<b>2024</b>	275	767	700	529	818	1,052	465	4,606
<b>2025</b>	274	767	700	529	819	1,050	466	4,605
<b>2026</b>	273	764	698	527	814	1,046	464	4,586
<b>2027</b>	272	762	696	526	812	1,044	463	4,575

\*=denotes peak enrollment during 2018 - 2027

Note: Does not include student yields from new and approved housing

**Henry Barnard Early Childhood Center** [Appendix A-8, A-9]

Henry Barnard Early Childhood Center enrolled 277 students in grades K - 2 in 2007. Gains in four of the next six years resulted in the historical peak enrollment of 328 students in 2013. Subsequently, losses in two of the last four years led to the enrollment of 274 students in 2017, representing a loss of 3 students, during the historical period.

Enrollment is expected to remain stable, leading to the forecasted 2027 enrollment of 272 students (loss of two students). It is anticipated that the kindergarten enrollment will range between 99 - 103 students per year and will account for approximately 13 percent of the district's kindergarten population.

Henry Barnard Early Childhood Center displays the average trend to lose students in transition to first and second grades. However, the entering kindergarten class is expected to be larger than the exiting second grade class of the previous year in each of the next ten years, minimizing the losses occurring through transition. These factors will result in the projected enrollment pattern.

This school currently houses fifteen (15) sections for the instruction of four sections each of kindergarten and first grade, three sections of second grade and four sections of self-contained special education. The average section sizes are 22.8 students in kindergarten, 21.8 students in first grade and 21.3 students in second grade. Enrollment projections suggest the need for 15 instructional sections, throughout the projection period, in order to maintain maximum class sizes of 25 students per section.

**Columbus Elementary School** [Appendix A-10, A-11]

Columbus Elementary School enrolled 764 students in grades K - 5 in 2007. Gains in five of the next six years resulted in the historical peak enrollment of 850 students in 2013. Subsequently, losses in each of the last four years led to the enrollment of 802 students in 2017, representing a gain of 38 students, or 5.0 percent, during the historical period.

Enrollment is expected to fluctuate, but overall decrease to the forecasted 2027 enrollment of 762 students. This represents a loss of 40 students, or 5.0 percent, when compared to the current enrollment. It is anticipated that the kindergarten enrollment will range between 118 - 122 students per year and will account for approximately 16 percent of the district's kindergarten population.

Columbus Elementary School displays the average trend to gain students in transition to first and third grades, maintain students in transition to fourth grade and lose students in transition to second and fifth grades. The entering kindergarten class is expected to be smaller than the exiting fifth grade class of the previous year in six of the next ten years. These factors will result in the projected enrollment pattern.

This school currently houses forty-one (41) sections for the instruction of 6 - 7 sections per grade level and two sections of self-contained special education. The average section size for this school is 20.0 students, ranging from an average of 16.0 students in first grade to 23.6 students in third grade. Enrollment projections suggest the need for 35 - 37 instructional sections, including two sections of self-contained special education, throughout the projection period, in order to maintain maximum class sizes of 25 students per section.

## **George M. Davis Elementary School** [Appendix A-12, A-13]

George M. Davis Elementary School enrolled 645 students in grades K - 5 in 2007. Gains in six of the next eight years resulted in the historical peak enrollment of 763 students in 2015. Subsequently, losses in each of the last two years led to the enrollment of 734 students in 2017, representing a gain of 89 students, or 14.0 percent, during the historical period.

Enrollment is expected to fluctuate, but overall decrease to the forecasted 2027 enrollment of 696 students. This represents a loss of 38 students, or 5.2 percent, when compared to the current enrollment. It is anticipated that the kindergarten enrollment will range between 113 - 117 students per year and will account for approximately 15 percent of the district's kindergarten population.

George M. Davis Elementary School displays the average trend to gain students in transition to first and third grades, maintain students in transition to second grade and lose students in transition to fourth and fifth grades. The entering kindergarten class is expected to be larger than the exiting fifth grade class of the previous year in five of the next ten years. These factors will result in the projected enrollment pattern.

This school currently houses thirty-six (36) sections for the instruction of 5 - 6 sections per grade level and one section of self-contained special education. The average section size for this school is 20.6 students, ranging from an average of 18.7 students in fourth grade to 22.7 students in third grade. Enrollment projections suggest the need for 30 - 31 instructional sections, including one section of self-contained special education, throughout the projection period, in order to maintain maximum class sizes of 25 students per section.

## **Jefferson Elementary School** [Appendix A-14, A-15]

Jefferson Elementary School enrolled 514 students in grades K - 5 in 2007. Gains in six of the next eight years resulted in the historical peak enrollment of 630 students in 2015. Subsequently, losses in each of the last two years led to the enrollment of 556 students in 2017, representing a gain of 42 students, or 8.2 percent, during the historical period.

Small losses are projected in seven of the next ten years, leading to the forecasted 2027 enrollment of 526 students. This represents a loss of 30 students, or 5.4 percent, when compared to the current enrollment. It is anticipated that the kindergarten enrollment will range between 81 - 84 students per year and will account for approximately 11 percent of the district's kindergarten population.

Jefferson Elementary School displays the average trend to gain students in transition to grades 1 - 3 and lose students in transition to grades 4 - 5. The entering kindergarten class is expected to be smaller than the exiting fifth grade class of the previous year in nine of the next ten years. These factors will result in the projected enrollment pattern.

This school currently houses thirty-two (32) sections for the instruction of 4 - 5 sections per grade level and five sections of self-contained special education. The average section size for this school is 18.9 students, ranging from an average of 17.3 students in kindergarten to 22.0 students in second grade. Enrollment projections suggest the need for 27 - 28 instructional sections, including five sections of self-contained special education, throughout the projection period, in order to maintain maximum class sizes of 25 students per section.

**Trinity Elementary School** [Appendix A-16, A-17]

Trinity Elementary School enrolled 820 students in grades K - 5 in 2007. Gains in five of the next eight years resulted in the historical peak enrollment of 904 students in 2015. Subsequently, losses in each of the last two years led to the enrollment of 848 students in 2017, representing a gain of 28 students, or 3.4 percent, during the historical period.

Small losses are projected in six of the next ten years, leading to the forecasted 2027 enrollment of 812 students. This represents a loss of 36 students, or 4.2 percent, when compared to the current enrollment. It is anticipated that the kindergarten enrollment will range between 122 - 126 students per year and will account for approximately 16 percent of the district's kindergarten population.

Trinity Elementary School displays the average trend to gain students in transition to first, second, third and fifth grades and lose students in transition to fourth grade. The entering kindergarten class is expected to be smaller than the exiting fifth grade class of the previous year in each of the next ten years, minimizing the gains occurring through transition. These factors will result in the projected enrollment pattern.

This school currently houses forty-one (41) sections for the instruction of 6 - 7 sections per grade level and two sections of self-contained special education. The average section size for this school is 21.1 students, ranging from an average of 19.6 students in second grade to 22.9 students in third grade. Enrollment projections suggest the need for 35 - 38 instructional sections, including two sections of self-contained special education, throughout the projection period, in order to maintain maximum class sizes of 25 students per section.

**William B. Ward Elementary School** [Appendix A-18, A-19]

William B. Ward Elementary School enrolled 1,075 students in grades K - 5 in 2007; this was the historical peak enrollment. Subsequently, losses in six of the last ten years led to the enrollment of 1,057 students in 2017, representing a loss of 18 students, during the historical period.

Enrollment is expected to fluctuate, but overall remain stable. The forecasted 2027 enrollment of 1,044 students represents a loss of 13 students, when compared to the current enrollment. It is anticipated that the kindergarten enrollment will range between 166 - 173 students per year and will account for approximately 22 percent of the district's kindergarten population.

William B. Ward Elementary School displays the average trend to gain students in transition to first, third and fifth grades and lose students in transition to second and fourth grades. The entering kindergarten class is expected to be smaller than the exiting fifth grade class of the previous year in nine of the next ten years, minimizing the gains occurring through transition. These factors will result in the projected enrollment pattern.

This school currently houses forty-eight (48) sections for the instruction of 7 - 8 sections per grade level and three sections of self-contained special education. The average section size for this school is 22.8 students, ranging from an average of 21.0 students in second grade to 26.4 students in third grade. Enrollment projections suggest the need for 45 - 47 instructional sections, including three sections of self-contained special education, throughout the projection period, in order to maintain maximum class sizes of 25 students per section.

**Daniel Webster Magnet School** [Appendix A-20, A-21]

Daniel Webster Magnet School enrolled 463 students in grades K - 5 in 2007. Gains in four of the next five years resulted in the historical peak enrollment of 556 students in 2012. Subsequently, losses in four of the last five years led to the enrollment of 497 students in 2017, representing a gain of 34 students, or 7.3 percent, during the historical period.

Small decreases are expected in eight of the next ten years, leading to the forecasted 2027 enrollment of 463 students. This represents a loss of 34 students, or 6.8 percent, when compared to the current enrollment. It is anticipated that the kindergarten enrollment will range between 64 - 66 students per year and will account for approximately 8 percent of the district's kindergarten population.

Daniel Webster Magnet School displays the average trend to gain students in transition to grades 2 - 5 and lose students in transition to first grade. The entering kindergarten class is expected to be smaller than the exiting fifth grade class of the previous year in each of the next ten years, minimizing the gains occurring through transition. These factors will result in the projected enrollment pattern.

This school currently houses twenty-four (24) sections for the instruction of 3 - 4 sections per grade level, two sections of Kaleidoscope and one section of self-contained special education. The average section size for this school is 23.2 students, ranging from an average of 20.0 students in third grade to 26.3 students in both fourth and fifth grades. Enrollment projections suggest the need for 21 - 23 instructional sections, including two sections of Kaleidoscope and one section of self-contained special education, throughout the projection period, in order to maintain maximum class sizes of 25 students per section.



## ELEMENTARY INSTRUCTIONAL SECTIONS

The current and projected need for elementary instructional sections is presented in Table 9. These needs are based on a maximum class size of 25 students in grades K - 5.

It is shown that the district currently houses 237 sections for the instruction of grades K - 5, including 18 sections of self-contained special education. The projected K - 5 enrollment suggests the need for 209 - 219 sections, including 18 sections of self-contained special education throughout the projection period. When compared to the current allocation of sections (237), it is projected that the district will require 18 fewer sections (219) next year and 28 fewer section (209) in 2027 [Appendix A-22]. Note: Please refer to Appendix B-9 for sectional projections which include the student impact from new and approved housing.

**Table 9 - City School District of New Rochelle Projected Elementary Sections**

Year	Henry Barnard (K - 2)	Columbus (K - 5)	George M. Davis (K - 5)	Jefferson (K - 5)	Trinity (K - 5)	William B. Ward (K - 5)	Daniel Webster (K - 5)	Total K - 5
<b>Actual</b> 2017	15	41	36	32	41	48	24	237
<b>Projected</b> 2018	15	37	31	28	38	47	23	219
2019	15	37	31	27	37	47	21	215
2020	15	35	31	28	38	47	21	215
2021	15	35	30	28	36	46	21	211
2022	15	36	31	27	37	46	21	213
2023	15	36	31	27	36	47	21	213
2024	15	35	31	27	36	46	21	211
2025	15	35	31	27	36	46	21	211
2026	15	35	31	27	36	45	21	210
2027	15	35	31	27	35	45	21	209

Note: Does not include the impact from new housing

## MIDDLE GRADES (6 - 8) ENROLLMENT *[Appendix A-3, A-6]*

The district enrolled 2,261 students in grades 6 - 8 in 2007. Gains in six of the last nine years led to the historical peak enrollment of 2,445 students in 2016. Subsequently, a loss this year resulted in the enrollment of 2,426 students in 2017. This represents a gain of 165 students, or 7.3 percent, during the historical period.

Losses are projected in five of the next ten years, leading to the forecasted 2027 enrollment of 2,272 students; this represents a loss of 154 students, or 6.3 percent, when compared to the current enrollment.

Table 10 details the current and projected middle school enrollment for the City School District of New Rochelle. It is shown that Albert Leonard Middle School is expected to reach its projection period peak enrollment of 1,273 students in 2020, while Isaac E. Young Middle School is expected to be at its peak in 2022, with 1,166 students. Note: Please refer to Appendix B for projected middle school enrollments which include anticipated student yields from new and approved housing.

**Table 10 - City School District of New Rochelle Projected Middle School Enrollment**

Year	Albert Leonard MS	Isaac E. Young MS	Total 6 - 8
<b>Actual</b> 2017	1,236	1,190	2,426
<b>Projected</b> 2018	1,269	1,159	2,428*
2019	1,242	1,087	2,329
2020	1,273*	1,109	2,382
2021	1,256	1,153	2,409
2022	1,240	1,166*	2,406
2023	1,215	1,099	2,314
2024	1,208	1,061	2,269
2025	1,218	1,063	2,281
2026	1,212	1,074	2,286
2027	1,205	1,067	2,272

\* - denotes peak enrollment during 2018 – 2027

Note: Does not include the impact from new housing

**Albert Leonard Middle School** [Appendix A-23]

Albert Leonard Middle School enrolled 1,195 students in grades 6 - 8 in 2007. A gain the following year resulted in the historical peak enrollment of 1,253 students in 2008. Losses in six of the last nine years led to the enrollment of 1,236 students in 2017; this represents an increase of 41 students, or 3.4 percent, during the historical period.

Gains are projected in two of the next three years, leading to the projection period peak enrollment of 1,273 students in 2020. Subsequently, losses are expected in six of the seven remaining years of the period. The forecasted 2027 enrollment of 1,205 students represents a loss of 31 students, or 2.5 percent, when compared to the current enrollment.

This school displays the average trend to gain students in transition to grades 6 - 8. However, the entering sixth grade class is expected to be smaller than the exiting eighth grade class of the previous year in seven of the next ten years, minimizing the gains in transition. These factors will result in the projected enrollment pattern.

**Isaac E. Young Middle School** [Appendix A-24]

Isaac E. Young Middle School enrolled 1,066 students in grades 6 - 8 in 2007. Gains in seven of the next nine years led to the historical peak enrollment of 1,224 students in 2016. Subsequently, a loss this year resulted in the current enrollment of 1,190 students in 2017; this represents an increase of 124 students, or 11.6 percent, during the historical period.

Enrollment is expected to decrease to the forecasted 2027 enrollment of 1,067 students, representing a loss of 123 students, or 10.3 percent, when compared to the current enrollment.

This school displays the average trend to gain students in transition to seventh grade, maintain students in progression to eighth grade and lose students in transition to sixth grade. The entering sixth grade class is expected to be smaller than the exiting eighth grade class of the previous year in six of the next ten years. These factors will result in the projected enrollment pattern.

## **SECONDARY GRADES ENROLLMENT (9 - 12)** *[Appendix A-3, A-6]*

### **New Rochelle High School** *[Appendix A-25]*

New Rochelle High School enrolled 3,404 students in grades 9 - 12 in 2007. Gains in five of the next ten years led to the historical peak enrollment of 3,483 students in 2017; this represents an increase of 79 students, or 2.3 percent, during the historical period.

Gains during the next two years will lead to the projection period peak enrollment of 3,601 students in 2019. Subsequently, losses are projected in five of the eight remaining years of the period. The forecasted 2027 enrollment of 3,403 students represents a loss of 80 students, or 2.3 percent, when compared to the current enrollment. Note: Please refer to Appendix B for the projected high school enrollment which includes the anticipated student yield from new and approved housing.

This school displays the average trend to gain students in progression to twelfth grade and lose students in transition to tenth and eleventh grades. However, the entering ninth grade class is expected to be larger than the exiting twelfth grade class of the previous year in each of the next ten years, minimizing the losses in transition. These factors will result in the projected enrollment pattern.

# Appendix A

=====

CITY SCHOOL DISTRICT OF NEW ROCHELLE  
 ACCURACY OF WESTERN SUFFOLK BOCES 2016-17 PROJECTIONS FOR 2017-18

=====

GRADE	Actual 2017-18	Projected	Difference	
KINDERGARTEN	781	770	-11	
FIRST	764	785	21	
SECOND	825	831	6	
THIRD	852	842	-10	
FOURTH	739	740	1	
FIFTH	787	779	-8	
SIXTH	785	798	13	
SEVENTH	835	830	-5	
EIGHTH	783	786	3	
NINTH	1,040	1,040	0	
TENTH	895	907	12	
ELEVENTH	705	691	-14	
TWELFTH	796	785	-11	
UNGRADED	90	99	9	Projected/Actual
<b>K - 12</b>	<b>10,677</b>	<b>10,683</b>	<b>6</b>	<b>100.1%</b>
K - 5	4,768	4,765	-3	99.9%
6 - 8	2,426	2,444	18	100.7%
9 - 12	3,483	3,474	-9	99.7%

=====

CITY SCHOOL DISTRICT OF NEW ROCHELLE  
HISTORICAL DISTRICT ENROLLMENT

GRADE	FDK begins			2010	2011	2012	2013	2014	2015	2016	2017
	2007	2008	2009								
KINDERGARTEN	700	743	814	824	785	788	794	846	835	772	781
FIRST	766	766	791	819	834	819	807	796	872	850	764
SECOND	755	765	770	800	819	856	808	796	760	857	825
THIRD	745	754	768	762	799	806	851	801	782	740	852
FOURTH	774	754	775	782	752	792	803	849	807	781	739
FIFTH	777	786	767	776	764	770	785	804	848	805	787
SIXTH	782	771	740	775	784	744	780	804	784	823	785
SEVENTH	763	818	791	790	778	788	757	787	815	783	835
EIGHTH	700	762	826	796	783	774	783	755	799	809	783
NINTH	1,134	859	979	1,081	1,016	1,023	991	983	959	1,062	1,040
TENTH	781	970	752	830	836	788	857	872	815	819	895
ELEVENTH	662	721	870	689	754	759	684	703	680	688	705
TWELFTH	778	803	804	769	713	764	855	808	837	724	796
UNGRADED	106	117	104	103	123	137	129	104	103	98	90
TOTAL K - 12	10,223	10,389	10,551	10,596	10,540	10,608	10,684	10,708	10,696	10,611	10,677
% CHANGE		1.6%	1.6%	0.4%	-0.5%	0.6%	0.7%	0.2%	-0.1%	-0.8%	0.6%
DISTRICT MIGRATION	07 - 08	08 - 09	09 - 10	10 - 11	11 - 12	12 - 13	13 - 14	14 - 15	15 - 16	16 - 17	<b>AVERAGE</b>
K - 1	109.4%	106.5%	100.6%	101.2%	104.3%	102.4%	100.3%	103.1%	101.8%	99.0%	<b>101.0%</b>
1 - 2	99.9%	100.5%	101.1%	100.0%	102.6%	98.7%	98.6%	95.5%	98.3%	97.1%	<b>97.6%</b>
2 - 3	99.9%	100.4%	99.0%	99.9%	98.4%	99.4%	99.1%	98.2%	97.4%	99.4%	<b>98.7%</b>
3 - 4	101.2%	102.8%	101.8%	98.7%	99.1%	99.6%	99.8%	100.7%	99.9%	99.9%	<b>99.9%</b>
4 - 5	101.6%	101.7%	100.1%	97.7%	102.4%	99.1%	100.1%	99.9%	99.8%	100.8%	<b>100.1%</b>
5 - 6	99.2%	94.1%	101.0%	101.0%	97.4%	101.3%	102.4%	97.5%	97.1%	97.5%	<b>98.3%</b>
6 - 7	104.6%	102.6%	106.8%	100.4%	100.5%	101.7%	100.9%	101.4%	99.9%	101.5%	<b>101.1%</b>
7 - 8	99.9%	101.0%	100.6%	99.1%	99.5%	99.4%	99.7%	101.5%	99.3%	100.0%	<b>100.0%</b>
8 - 9	122.7%	128.5%	130.9%	127.6%	130.7%	128.0%	125.5%	127.0%	132.9%	128.6%	<b>129.1%</b>
9 - 10	85.5%	87.5%	84.8%	77.3%	77.6%	83.8%	88.0%	82.9%	85.4%	84.3%	<b>84.9%</b>
10 - 11	92.3%	89.7%	91.6%	90.8%	90.8%	86.8%	82.0%	78.0%	84.4%	86.1%	<b>84.8%</b>
11 - 12	121.3%	111.5%	88.4%	103.5%	101.3%	112.6%	118.1%	119.1%	106.5%	115.7%	<b>114.4%</b>

CITY SCHOOL DISTRICT OF NEW ROCHELLE  
 HISTORICAL DISTRICT ENROLLMENT BY GRADE CONFIGURATION

GRADE	2007	2008	2009	2010	2011	2012	2013	2014	2015	2016	2017
KINDERGARTEN	700	743	814	824	785	788	794	846	835	772	781
FIRST	766	766	791	819	834	819	807	796	872	850	764
SECOND	755	765	770	800	819	856	808	796	760	857	825
THIRD	745	754	768	762	799	806	851	801	782	740	852
FOURTH	774	754	775	782	752	792	803	849	807	781	739
FIFTH	777	786	767	776	764	770	785	804	848	805	787
UNGRADED	41	46	31	39	47	44	36	27	25	18	20
TOTAL K - 5	4,558	4,614	4,716	4,802	4,800	4,875	4,884	4,919	4,929	4,823	4,768
% CHANGE		1.2%	2.2%	1.8%	0.0%	1.6%	0.2%	0.7%	0.2%	-2.2%	-1.1%
SIXTH	782	771	740	775	784	744	780	804	784	823	785
SEVENTH	763	818	791	790	778	788	757	787	815	783	835
EIGHTH	700	762	826	796	783	774	783	755	799	809	783
UNGRADED	16	20	24	20	31	38	53	42	39	30	23
TOTAL 6 - 8	2,261	2,371	2,381	2,381	2,376	2,344	2,373	2,388	2,437	2,445	2,426
% CHANGE		4.9%	0.4%	0.0%	-0.2%	-1.3%	1.2%	0.6%	2.1%	0.3%	-0.8%
NINTH	1,134	859	979	1,081	1,016	1,023	991	983	959	1,062	1,040
TENTH	781	970	752	830	836	788	857	872	815	819	895
ELEVENTH	662	721	870	689	754	759	684	703	680	688	705
TWELFTH	778	803	804	769	713	764	855	808	837	724	796
UNGRADED	49	51	49	44	45	55	40	35	39	50	47
TOTAL 9 - 12	3,404	3,404	3,454	3,413	3,364	3,389	3,427	3,401	3,330	3,343	3,483
% CHANGE		0.0%	1.5%	-1.2%	-1.4%	0.7%	1.1%	-0.8%	-2.1%	0.4%	4.2%
TOTAL K - 12	10,223	10,389	10,551	10,596	10,540	10,608	10,684	10,708	10,696	10,611	10,677
% CHANGE		1.6%	1.6%	0.4%	-0.5%	0.6%	0.7%	0.2%	-0.1%	-0.8%	0.6%



CITY SCHOOL DISTRICT OF NEW ROCHELLE  
KINDERGARTEN PROJECTIONS

Birth Year	Births		Enrollment Year	District K	Ratio	
	Westchester County	New Rochelle City			K/ County Birth	K/ City Birth
<b>2002</b>	12,807	1,040	<b>2007</b>	700	0.0547	0.673
<b>2003</b>	12,789	1,015	<b>2008</b>	743	0.0581	0.732
<b>2004</b>	12,405	959	<b>2009</b>	814	0.0656	0.849
<b>2005</b>	12,095	996	<b>2010</b>	824	0.0681	0.827
<b>2006</b>	11,914	934	<b>2011</b>	785	0.0659	0.840
<b>2007</b>	11,857	912	<b>2012</b>	788	0.0665	0.864
<b>2008</b>	11,517	963	<b>2013</b>	794	0.0689	0.825
<b>2009</b>	11,143	972	<b>2014</b>	846	0.0759	0.870
<b>2010</b>	11,104	986	<b>2015</b>	835	0.0752	0.847
<b>2011</b>	10,719	898	<b>2016</b>	772	0.0720	0.860
<b>2012</b>	10,439	896	<b>2017</b>	781	0.0748	0.872
<b>2013</b>	10,557	914	<b>2018</b>	<b>791</b>		
<b>2014</b>	10,641	867	<b>2019</b>	<b>768</b>		
<b>2015</b>	10,639	912	<b>2020</b>	<b>786</b>	0.0678	0.824
<b>est. 2016</b>	<b>10,481</b>		<b>2021</b>	<b>776</b>	historical	historical
<b>est. 2017</b>	<b>10,491</b>		<b>2022</b>	<b>776</b>	average	average
<b>est. 2018</b>	<b>10,475</b>		<b>2023</b>	<b>775</b>		
<b>est. 2019</b>	<b>10,434</b>		<b>2024</b>	<b>772</b>	0.0703	0.850
<b>est. 2020</b>	<b>10,383</b>		<b>2025</b>	<b>768</b>	average	average
<b>est. 2021</b>	<b>10,359</b>		<b>2026</b>	<b>767</b>	since FDK	since FDK
<b>est. 2022</b>	<b>10,326</b>		<b>2027</b>	<b>764</b>	begins	begins

CITY SCHOOL DISTRICT OF NEW ROCHELLE  
PROJECTED DISTRICT ENROLLMENT

GRADE	2017	2018	2019	2020	2021	2022	2023	2024	2025	2026	2027
	Actual										
KINDERGARTEN	781	791	768	786	776	776	775	772	768	767	764
FIRST	764	789	799	776	794	784	784	783	780	776	775
SECOND	825	746	770	780	758	775	765	765	764	761	758
THIRD	852	814	736	760	770	748	765	755	755	754	751
FOURTH	739	851	813	735	759	769	747	764	754	754	753
FIFTH	787	740	852	814	736	760	770	748	765	755	755
SIXTH	785	774	728	838	801	724	747	757	736	752	743
SEVENTH	835	793	782	736	847	810	732	755	765	744	760
EIGHTH	783	835	793	782	736	847	810	732	755	765	744
NINTH	1,040	1,011	1,078	1,024	1,010	950	1,094	1,046	945	975	988
TENTH	895	883	858	915	869	857	806	928	888	802	827
ELEVENTH	705	759	749	728	776	737	727	684	787	753	680
TWELFTH	796	807	868	857	833	888	843	832	783	900	861
UNGRADED	90	94	94	94	93	93	92	92	91	91	91
TOTAL K -12	10,677	10,687	10,688	10,625	10,558	10,518	10,457	10,413	10,336	10,349	10,250
% CHANGE		0.1%	0.0%	-0.6%	-0.6%	-0.4%	-0.6%	-0.4%	-0.7%	0.1%	-1.0%

Note: The shaded area denotes grade-level students already in the system.

CITY SCHOOL DISTRICT OF NEW ROCHELLE  
PROJECTED DISTRICT ENROLLMENT BY GRADE CONFIGURATION

GRADE	2017	2018	2019	2020	2021	2022	2023	2024	2025	2026	2027
	Actual										
KINDERGARTEN	781	791	768	786	776	776	775	772	768	767	764
FIRST	764	789	799	776	794	784	784	783	780	776	775
SECOND	825	746	770	780	758	775	765	765	764	761	758
THIRD	852	814	736	760	770	748	765	755	755	754	751
FOURTH	739	851	813	735	759	769	747	764	754	754	753
FIFTH	787	740	852	814	736	760	770	748	765	755	755
UNGRADED	20	20	20	20	19	19	19	19	19	19	19
TOTAL K - 5	4,768	4,751	4,758	4,671	4,612	4,631	4,625	4,606	4,605	4,586	4,575
% CHANGE		-0.4%	0.1%	-1.8%	-1.3%	0.4%	-0.1%	-0.4%	0.0%	-0.4%	-0.2%
SIXTH	785	774	728	838	801	724	747	757	736	752	743
SEVENTH	835	793	782	736	847	810	732	755	765	744	760
EIGHTH	783	835	793	782	736	847	810	732	755	765	744
UNGRADED	23	26	26	26	25	25	25	25	25	25	25
TOTAL 6 - 8	2,426	2,428	2,329	2,382	2,409	2,406	2,314	2,269	2,281	2,286	2,272
% CHANGE		0.1%	-4.1%	2.3%	1.1%	-0.1%	-3.8%	-1.9%	0.5%	0.2%	-0.6%
NINTH	1,040	1,011	1,078	1,024	1,010	950	1,094	1,046	945	975	988
TENTH	895	883	858	915	869	857	806	928	888	802	827
ELEVENTH	705	759	749	728	776	737	727	684	787	753	680
TWELFTH	796	807	868	857	833	888	843	832	783	900	861
UNGRADED	47	48	48	48	49	49	48	48	47	47	47
TOTAL 9 - 12	3,483	3,508	3,601	3,572	3,537	3,481	3,518	3,538	3,450	3,477	3,403
% CHANGE		0.7%	2.7%	-0.8%	-1.0%	-1.6%	1.1%	0.6%	-2.5%	0.8%	-2.1%
TOTAL K - 12	10,677	10,687	10,688	10,625	10,558	10,518	10,457	10,413	10,336	10,349	10,250
% CHANGE		0.1%	0.0%	-0.6%	-0.6%	-0.4%	-0.6%	-0.4%	-0.7%	0.1%	-1.0%

CITY SCHOOL DISTRICT OF NEW ROCHELLE  
 AVERAGE GRADE LEVEL SIZE

GRADE	1 07 - 12	2 12 - 17	3 17 - 22	4 22 - 27	2/1	change 3/2	4/3
KINDERGARTEN	776	803	780	770	<b>3.5%</b>	-2.9%	-1.3%
FIRST	799	818	784	780	<b>2.4%</b>	-4.2%	-0.5%
SECOND	794	817	776	765	<b>2.9%</b>	-5.0%	-1.4%
THIRD	772	805	780	755	<b>4.3%</b>	-3.1%	-3.2%
FOURTH	772	795	778	757	<b>3.0%</b>	-2.1%	-2.7%
FIFTH	773	800	782	759	<b>3.5%</b>	-2.3%	-2.9%
SIXTH	766	787	775	743	<b>2.7%</b>	-1.5%	-4.1%
SEVENTH	788	794	801	761	<b>0.8%</b>	<b>0.9%</b>	-5.0%
EIGHTH	774	784	796	776	<b>1.3%</b>	<b>1.5%</b>	-2.5%
NINTH	1,015	1,010	1,019	1,000	-0.5%	<b>0.9%</b>	-1.9%
TENTH	826	841	880	851	<b>1.8%</b>	<b>4.6%</b>	-3.3%
ELEVENTH	743	703	742	728	-5.4%	<b>5.5%</b>	-1.9%
TWELFTH	772	797	842	851	<b>3.2%</b>	<b>5.6%</b>	<b>1.1%</b>

DISPLACEMENT BETWEEN ENTERING AND EXITING GRADES

Year	Grade 12	Year	K	Grade 1	Difference
2007	778	2008		766	-12
2008	803	2009	814		<b>11</b>
2009	804	2010	824		<b>20</b>
2010	769	2011	785		<b>16</b>
2011	713	2012	788		<b>75</b>
2012	764	2013	794		<b>30</b>
2013	855	2014	846		-9
2014	808	2015	835		<b>27</b>
2015	837	2016	772		-65
2016	724	2017	781		<b>57</b>
2017	796	2018	791		-5
2018	807	2019	768		-39
2019	868	2020	786		-82
2020	857	2021	776		-81
2021	833	2022	776		-57
2022	888	2023	775		-113
2023	843	2024	772		-71
2024	832	2025	768		-64
2025	783	2026	767		-16
2026	900	2027	764		-136
Average Difference 2007 - 2012					<b>22</b>
Average Difference 2012 - 2017					<b>8</b>
Average Difference 2017 - 2022					-53
Average Difference 2022 - 2027					-80

HENRY BARNARD EARLY CHILDHOOD CENTER  
 HISTORICAL ENROLLMENT

GRADE	2007	2008	FDK begins	2010	2011	2012	2013	2014	2015	2016	2017
			2009								
KINDERGARTEN	100	110	116	111	101	108	102	114	87	103	106
FIRST	87	94	100	98	103	100	117	91	100	84	97
SECOND	76	81	85	87	81	85	105	91	67	85	70
UNGRADED	14	0	0	4	2	3	4	1	2	1	1
TOTAL K - 2	277	285	301	300	287	296	328	297	256	273	274
% CHANGE		2.9%	5.6%	-0.3%	-4.3%	3.1%	10.8%	-9.5%	-13.8%	6.6%	0.4%
H. Barnad CC Migration	07 - 08	08 - 09	09 - 10	10 - 11	11 - 12	12 - 13	13 - 14	14 - 15	15 - 16	16 - 17	<b>AVERAGE</b>
K - 1	94.0%	90.9%	84.5%	92.8%	99.0%	108.3%	89.2%	87.7%	96.6%	94.2%	<b>94.3%</b>
1 - 2	93.1%	90.4%	87.0%	82.7%	82.5%	105.0%	77.8%	73.6%	85.0%	83.3%	<b>83.4%</b>

 HENRY BARNARD EARLY CHILDHOOD CENTER  
 PROJECTED ENROLLMENT

GRADE	2017	2018	2019	2020	2021	2022	2023	2024	2025	2026	2027
	Actual										
KINDERGARTEN	106	103	100	102	101	101	101	100	100	100	99
FIRST	97	100	97	94	96	95	95	95	94	94	94
SECOND	70	81	83	81	78	80	79	79	79	78	78
UNGRADED	1	1	1	1	1	1	1	1	1	1	1
TOTAL K - 2	274	285	281	278	276	277	276	275	274	273	272
% CHANGE		4.0%	-1.4%	-1.1%	-0.7%	0.4%	-0.4%	-0.4%	-0.4%	-0.4%	-0.4%

HENRY BARNARD EARLY CHILDHOOD CENTER  
 PROJECTED ENROLLMENT - SECTIONAL ANALYSIS

based on the maximum class size of 25 for K - 2

GRADE	2017	2018	2019	2020	2021	2022	2023	2024	2025	2026	2027
	Actual										
Kindergarten (25)	<b>91</b>	92	89	91	90	90	90	89	89	89	88
# of Sections	<b>4</b>	4	4	4	4	4	4	4	4	4	4
Avg Section Size	<b>22.8</b>	23.0	22.3	22.8	22.5	22.5	22.5	22.3	22.3	22.3	22.0
First (25)	<b>87</b>	85	86	83	85	84	84	84	83	83	83
# of Sections	<b>4</b>	4	4	4	4	4	4	4	4	4	4
Avg Section Size	<b>21.8</b>	21.3	21.5	20.8	21.3	21.0	21.0	21.0	20.8	20.8	20.8
Second (25)	<b>64</b>	71	68	70	67	69	68	68	68	67	67
# of Sections	<b>3</b>	3	3	3	3	3	3	3	3	3	3
Avg Section Size	<b>21.3</b>	23.7	22.7	23.3	22.3	23.0	22.7	22.7	22.7	22.3	22.3
Graded SC SPED	<b>31</b>	36	37	33	33	33	33	33	33	33	33
UNGRADED	<b>1</b>	1	1	1	1	1	1	1	1	1	1
# of Sections	<b>4</b>	4	4	4	4	4	4	4	4	4	4
Total K - 2 Enrollment	<b>274</b>	285	281	278	276	277	276	275	274	273	272
Total K - 2 Sections	<b>15</b>	15	15	15	15	15	15	15	15	15	15
Avg Section Size	<b>21.9</b>	22.6	22.1	22.3	22.0	22.2	22.1	22.0	21.9	21.8	21.7

Note: Projections for SC SPED students represent placeholders based on current student distribution by grade and the students-to-teacher class ratio.

Note: The boxed cells indicate the class average is approaching the maximum class size limit for the grade level.

COLUMBUS ELEMENTARY SCHOOL  
 HISTORICAL ENROLLMENT

GRADE	2007	2008	FDK begins 2009	2010	2011	2012	2013	2014	2015	2016	2017
	KINDERGARTEN	121	123	131	141	151	117	142	140	129	109
FIRST	130	133	139	132	150	161	122	140	150	160	114
SECOND	114	122	130	145	134	145	150	117	116	149	154
THIRD	134	129	130	133	149	144	158	154	123	116	165
FOURTH	121	140	138	127	127	139	133	154	146	125	119
FIFTH	136	116	133	137	126	120	136	128	149	151	121
UNGRADED	8	14	15	10	9	11	9	11	13	6	6
TOTAL	764	777	816	825	846	837	850	844	826	816	802
% CHANGE		1.7%	5.0%	1.1%	2.5%	-1.1%	1.6%	-0.7%	-2.1%	-1.2%	-1.7%
Columbus ES Migration	07 - 08	08 - 09	09 - 10	10 - 11	11 - 12	12 - 13	13 - 14	14 - 15	15 - 16	16 - 17	<b>AVERAGE</b>
K - 1	109.9%	113.0%	100.8%	106.4%	106.6%	104.3%	98.6%	107.1%	124.0%	104.6%	<b>105.7%</b>
1 - 2	93.8%	97.7%	104.3%	101.5%	96.7%	93.2%	95.9%	82.9%	99.3%	96.3%	<b>96.3%</b>
2 - 3	113.2%	106.6%	102.3%	102.8%	107.5%	109.0%	102.7%	105.1%	100.0%	110.7%	<b>106.4%</b>
3 - 4	104.5%	107.0%	97.7%	95.5%	93.3%	92.4%	97.5%	94.8%	101.6%	102.6%	<b>99.7%</b>
4 - 5	95.9%	95.0%	99.3%	99.2%	94.5%	97.8%	96.2%	96.8%	103.4%	96.8%	<b>97.4%</b>

 COLUMBUS ELEMENTARY SCHOOL  
 PROJECTED ENROLLMENT

GRADE	2017	2018	2019	2020	2021	2022	2023	2024	2025	2026	2027
	Actual										
KINDERGARTEN	123	122	119	122	120	120	120	119	119	119	118
FIRST	114	131	130	127	130	128	128	128	127	127	127
SECOND	154	110	126	125	122	125	123	123	123	122	122
THIRD	165	161	118	135	134	130	133	131	131	131	130
FOURTH	119	165	160	118	136	134	130	133	131	131	131
FIFTH	121	116	161	156	115	132	130	127	130	128	128
UNGRADED	6	6	6	6	6	6	6	6	6	6	6
TOTAL	802	811	820	789	763	775	770	767	767	764	762
% CHANGE		1.1%	1.1%	-3.8%	-3.3%	1.6%	-0.6%	-0.4%	0.0%	-0.4%	-0.3%

COLUMBUS ELEMENTARY SCHOOL  
PROJECTED ENROLLMENT - SECTIONAL ANALYSIS

based on the maximum class size of 25 for K - 5

GRADE	2017	2018	2019	2020	2021	2022	2023	2024	2025	2026	2027
	Actual										
Kindergarten (25)	<b>120</b>	120	117	120	118	118	118	117	117	117	116
# of Sections	<b>6</b>	5	5	5	5	5	5	5	5	5	5
Avg Section Size	<b>20.0</b>	24.0	23.4	24.0	23.6	23.6	23.6	23.4	23.4	23.4	23.2
First (25)	<b>112</b>	128	128	125	128	126	126	126	125	125	125
# of Sections	<b>7</b>	6	6	5	6	6	6	6	5	5	5
Avg Section Size	<b>16.0</b>	21.3	21.3	25.0	21.3	21.0	21.0	21.0	25.0	25.0	25.0
Second (25)	<b>153</b>	108	123	123	120	123	121	121	121	120	120
# of Sections	<b>7</b>	5	5	5	5	5	5	5	5	5	5
Avg Section Size	<b>21.9</b>	21.6	24.6	24.6	24.0	24.6	24.2	24.2	24.2	24.0	24.0
Third (25)	<b>165</b>	160	116	132	132	128	131	129	129	129	128
# of Sections	<b>7</b>	7	5	6	6	6	6	6	6	6	6
Avg Section Size	<b>23.6</b>	22.9	23.2	22.0	22.0	21.3	21.8	21.5	21.5	21.5	21.3
Fourth (25)	<b>118</b>	165	159	116	133	132	128	131	129	129	129
# of Sections	<b>6</b>	7	7	5	6	6	6	6	6	6	6
Avg Section Size	<b>19.7</b>	23.6	22.7	23.2	22.2	22.0	21.3	21.8	21.5	21.5	21.5
Fifth (25)	<b>115</b>	115	161	155	113	129	128	125	128	126	126
# of Sections	<b>6</b>	5	7	7	5	6	6	5	6	6	6
Avg Section Size	<b>19.2</b>	23.0	23.0	22.1	22.6	21.5	21.3	25.0	21.3	21.0	21.0
Graded SC SPED	<b>13</b>	9	10	12	13	13	12	12	12	12	12
UNGRADED	<b>6</b>	6	6	6	6	6	6	6	6	6	6
# of Sections	<b>2</b>	2	2	2	2	2	2	2	2	2	2
Total Enrollment	<b>802</b>	811	820	789	763	775	770	767	767	764	762
Total Sections	<b>41</b>	37	37	35	35	36	36	35	35	35	35
Avg Section Size	<b>20.0</b>	22.7	23.0	23.5	22.6	22.3	22.2	22.8	22.8	22.7	22.7

Note: Projections for SC SPED students represent placeholders based on current student distribution by grade and the students-to-teacher class ratio.

Note: The boxed cells indicate the class average is approaching the maximum class size limit for the grade level.



GEORGE M. DAVIS ELEMENTARY SCHOOL  
 HISTORICAL ENROLLMENT

GRADE	2007	2008	FDK begins 2009	2010	2011	2012	2013	2014	2015	2016	2017
	KINDERGARTEN	96	70	97	128	89	134	119	123	133	101
FIRST	99	104	85	103	125	96	135	121	130	133	100
SECOND	94	104	106	94	105	122	96	144	120	136	123
THIRD	97	103	129	115	112	121	138	112	158	129	136
FOURTH	138	122	107	116	118	105	129	122	104	138	116
FIFTH	121	141	105	106	117	121	112	132	118	102	136
UNGRADED	0	1	0	3	6	5	6	0	0	0	1
TOTAL	645	645	629	665	672	704	735	754	763	739	734
% CHANGE		0.0%	-2.5%	5.7%	1.1%	4.8%	4.4%	2.6%	1.2%	-3.1%	-0.7%
G. M. Davis ES Migration	07 - 08	08 - 09	09 - 10	10 - 11	11 - 12	12 - 13	13 - 14	14 - 15	15 - 16	16 - 17	<b>AVERAGE</b>
K - 1	108.3%	121.4%	106.2%	97.7%	107.9%	100.7%	101.7%	105.7%	100.0%	99.0%	<b>101.4%</b>
1 - 2	105.1%	101.9%	110.6%	101.9%	97.6%	100.0%	106.7%	99.2%	104.6%	92.5%	<b>100.1%</b>
2 - 3	109.6%	124.0%	108.5%	119.1%	115.2%	113.1%	116.7%	109.7%	107.5%	100.0%	<b>106.8%</b>
3 - 4	125.8%	103.9%	89.9%	102.6%	93.8%	106.6%	88.4%	92.9%	87.3%	89.9%	<b>90.0%</b>
4 - 5	102.2%	86.1%	99.1%	100.9%	102.5%	106.7%	102.3%	96.7%	98.1%	98.6%	<b>98.9%</b>

 GEORGE M. DAVIS ELEMENTARY SCHOOL  
 PROJECTED ENROLLMENT

GRADE	2017	2018	2019	2020	2021	2022	2023	2024	2025	2026	2027
	Actual										
KINDERGARTEN	122	117	114	117	115	115	115	115	114	114	113
FIRST	100	124	119	116	119	117	117	117	117	116	116
SECOND	123	100	124	119	116	119	117	117	117	117	116
THIRD	136	129	108	133	127	124	127	125	125	125	125
FOURTH	116	123	116	97	120	114	112	114	113	113	113
FIFTH	136	115	122	115	96	119	113	111	113	112	112
UNGRADED	1	1	1	1	1	1	1	1	1	1	1
TOTAL	734	709	704	698	694	709	702	700	700	698	696
% CHANGE		-3.4%	-0.7%	-0.9%	-0.6%	2.2%	-1.0%	-0.3%	0.0%	-0.3%	-0.3%

GEORGE M. DAVIS ELEMENTARY SCHOOL  
PROJECTED ENROLLMENT - SECTIONAL ANALYSIS

based on the maximum class size of 25 for K - 5

GRADE	2017	2018	2019	2020	2021	2022	2023	2024	2025	2026	2027
	Actual										
Kindergarten (25)	<b>122</b>	117	114	117	115	115	115	115	114	114	113
# of Sections	<b>6</b>	5	5	5	5	5	5	5	5	5	5
Avg Section Size	<b>20.3</b>	23.4	22.8	23.4	23.0	23.0	23.0	23.0	22.8	22.8	22.6
First (25)	<b>100</b>	124	119	116	119	117	117	117	117	116	116
# of Sections	<b>5</b>	5	5	5	5	5	5	5	5	5	5
Avg Section Size	<b>20.0</b>	24.8	23.8	23.2	23.8	23.4	23.4	23.4	23.4	23.2	23.2
Second (25)	<b>123</b>	100	124	119	116	119	117	117	117	117	116
# of Sections	<b>6</b>	4	5	5	5	5	5	5	5	5	5
Avg Section Size	<b>20.5</b>	25.0	24.8	23.8	23.2	23.8	23.4	23.4	23.4	23.4	23.2
Third (25)	<b>136</b>	126	105	130	124	121	124	122	122	122	122
# of Sections	<b>6</b>	6	5	6	5	5	5	5	5	5	5
Avg Section Size	<b>22.7</b>	21.0	21.0	21.7	24.8	24.2	24.8	24.4	24.4	24.4	24.4
Fourth (25)	<b>112</b>	123	113	94	117	111	109	111	110	110	110
# of Sections	<b>6</b>	5	5	4	5	5	5	5	5	5	5
Avg Section Size	<b>18.7</b>	24.6	22.6	23.5	23.4	22.2	21.8	22.2	22.0	22.0	22.0
Fifth (25)	<b>128</b>	111	122	112	93	116	110	108	110	109	109
# of Sections	<b>6</b>	5	5	5	4	5	5	5	5	5	5
Avg Section Size	<b>21.3</b>	22.2	24.4	22.4	23.3	23.2	22.0	21.6	22.0	21.8	21.8
Graded SC SPED	<b>12</b>	7	6	9	9	9	9	9	9	9	9
UNGRADED	<b>1</b>	1	1	1	1	1	1	1	1	1	1
# of Sections	<b>1</b>	1	1	1	1	1	1	1	1	1	1
Total Enrollment	<b>734</b>	709	704	698	694	709	702	700	700	698	696
Total Sections	<b>36</b>	31	31	31	30	31	31	31	31	31	31
Avg Section Size	<b>20.6</b>	23.5	23.2	23.0	23.6	23.3	23.1	23.0	23.0	22.9	22.9

Note: Projections for SC SPED students represent placeholders based on current student distribution by grade and the students-to-teacher class ratio.

Note: The boxed cells indicate the class average is approaching the maximum class size limit for the grade level.

JEFFERSON ELEMENTARY SCHOOL  
HISTORICAL ENROLLMENT

GRADE	2007	2008	FDK begins 2009	2010	2011	2012	2013	2014	2015	2016	2017
	KINDERGARTEN	72	103	101	111	103	86	96	79	98	91
FIRST	80	82	109	102	114	101	79	97	89	95	91
SECOND	87	86	92	111	107	121	90	76	106	86	99
THIRD	91	94	79	97	110	107	132	120	84	104	104
FOURTH	86	85	86	90	90	105	106	130	127	83	98
FIFTH	87	83	89	82	85	95	102	103	123	118	87
UNGRADED	11	10	12	8	9	9	6	5	3	5	5
TOTAL	514	543	568	601	618	624	611	610	630	582	556
% CHANGE		5.6%	4.6%	5.8%	2.8%	1.0%	-2.1%	-0.2%	3.3%	-7.6%	-4.5%
Jefferson ES Migration	07 - 08	08 - 09	09 - 10	10 - 11	11 - 12	12 - 13	13 - 14	14 - 15	15 - 16	16 - 17	<b>AVERAGE</b>
K - 1	113.9%	105.8%	101.0%	102.7%	98.1%	91.9%	101.0%	112.7%	96.9%	100.0%	<b>100.5%</b>
1 - 2	107.5%	112.2%	101.8%	104.9%	106.1%	89.1%	96.2%	109.3%	96.6%	104.2%	<b>101.6%</b>
2 - 3	108.0%	91.9%	105.4%	99.1%	100.0%	109.1%	133.3%	110.5%	98.1%	120.9%	<b>111.9%</b>
3 - 4	93.4%	91.5%	113.9%	92.8%	95.5%	99.1%	98.5%	105.8%	98.8%	94.2%	<b>98.4%</b>
4 - 5	96.5%	104.7%	95.3%	94.4%	105.6%	97.1%	97.2%	94.6%	92.9%	104.8%	<b>98.4%</b>

JEFFERSON ELEMENTARY SCHOOL  
PROJECTED ENROLLMENT

GRADE	2017	2018	2019	2020	2021	2022	2023	2024	2025	2026	2027
	Actual										
KINDERGARTEN	72	84	82	83	82	82	82	82	82	81	81
FIRST	91	72	84	82	83	82	82	82	82	82	81
SECOND	99	92	73	85	83	84	83	83	83	83	83
THIRD	104	109	104	83	95	93	94	93	93	93	93
FOURTH	98	102	107	102	82	94	92	93	92	92	92
FIFTH	87	96	100	105	100	81	93	91	92	91	91
UNGRADED	5	5	5	5	5	5	5	5	5	5	5
TOTAL	556	560	555	545	530	521	531	529	529	527	526
% CHANGE		0.7%	-0.9%	-1.8%	-2.8%	-1.7%	1.9%	-0.4%	0.0%	-0.4%	-0.2%

JEFFERSON ELEMENTARY SCHOOL  
PROJECTED ENROLLMENT - SECTIONAL ANALYSIS

based on the maximum class size of 25 for K - 5

GRADE	2017	2018	2019	2020	2021	2022	2023	2024	2025	2026	2027
	Actual										
Kindergarten (25)	<b>69</b>	77	75	76	75	75	75	75	75	74	74
# of Sections	<b>4</b>	4	3	4	3	3	3	3	3	3	3
Avg Section Size	<b>17.3</b>	19.3	25.0	19.0	25.0	25.0	25.0	25.0	25.0	24.7	24.7
First (25)	<b>87</b>	69	77	75	76	75	75	75	75	75	74
# of Sections	<b>5</b>	3	4	3	4	3	3	3	3	3	3
Avg Section Size	<b>17.4</b>	23.0	19.3	25.0	19.0	25.0	25.0	25.0	25.0	25.0	24.7
Second (25)	<b>88</b>	88	70	78	76	77	76	76	76	76	76
# of Sections	<b>4</b>	4	3	4	4	4	4	4	4	4	4
Avg Section Size	<b>22.0</b>	22.0	23.3	19.5	19.0	19.3	19.0	19.0	19.0	19.0	19.0
Third (25)	<b>97</b>	98	100	80	88	86	87	86	86	86	86
# of Sections	<b>5</b>	4	4	4	4	4	4	4	4	4	4
Avg Section Size	<b>19.4</b>	24.5	25.0	20.0	22.0	21.5	21.8	21.5	21.5	21.5	21.5
Fourth (25)	<b>88</b>	95	96	98	79	87	85	86	85	85	85
# of Sections	<b>5</b>	4	4	4	4	4	4	4	4	4	4
Avg Section Size	<b>17.6</b>	23.8	24.0	24.5	19.8	21.8	21.3	21.5	21.3	21.3	21.3
Fifth (25)	<b>80</b>	86	93	94	96	78	86	84	85	84	84
# of Sections	<b>4</b>	4	4	4	4	4	4	4	4	4	4
Avg Section Size	<b>20.0</b>	21.5	23.3	23.5	24.0	19.5	21.5	21.0	21.3	21.0	21.0
Graded SC SPED	<b>42</b>	42	39	39	35	38	42	42	42	42	42
UNGRADED	<b>5</b>	5	5	5	5	5	5	5	5	5	5
# of Sections	<b>5</b>	5	5	5	5	5	5	5	5	5	5
Total Enrollment	<b>556</b>	560	555	545	530	521	531	529	529	527	526
Total Sections	<b>32</b>	28	27	28	28	27	27	27	27	27	27
Avg Section Size	<b>18.9</b>	22.3	23.3	21.9	21.5	22.0	22.3	22.2	22.2	22.1	22.0

Note: Projections for SC SPED students represent placeholders based on current student distribution by grade and the students-to-teacher class ratio.

Note: The boxed cells indicate the class average is approaching the maximum class size limit for the grade level.

TRINITY ELEMENTARY SCHOOL  
 HISTORICAL ENROLLMENT

GRADE	2007	2008	FDK begins 2009	2010	2011	2012	2013	2014	2015	2016	2017
	KINDERGARTEN	112	134	145	126	127	129	114	140	142	124
FIRST	138	127	138	145	126	139	132	117	147	138	126
SECOND	135	141	124	132	139	144	138	136	128	149	138
THIRD	143	147	142	137	154	152	149	156	167	138	167
FOURTH	139	146	159	157	133	156	158	152	153	162	135
FIFTH	153	147	148	159	150	137	156	157	167	153	158
UNGRADED	0	0	0	0	4	2	2	0	0	0	0
TOTAL	820	842	856	856	833	859	849	858	904	864	848
% CHANGE		2.7%	1.7%	0.0%	-2.7%	3.1%	-1.2%	1.1%	5.4%	-4.4%	-1.9%
Trinity ES Migration	07 - 08	08 - 09	09 - 10	10 - 11	11 - 12	12 - 13	13 - 14	14 - 15	15 - 16	16 - 17	<b>AVERAGE</b>
K - 1	113.4%	103.0%	100.0%	100.0%	109.4%	102.3%	102.6%	105.0%	97.2%	101.6%	<b>101.8%</b>
1 - 2	102.2%	97.6%	95.7%	95.9%	114.3%	99.3%	103.0%	109.4%	101.4%	100.0%	<b>102.6%</b>
2 - 3	108.9%	100.7%	110.5%	116.7%	109.4%	103.5%	113.0%	122.8%	107.8%	112.1%	<b>111.8%</b>
3 - 4	102.1%	108.2%	110.6%	97.1%	101.3%	103.9%	102.0%	98.1%	97.0%	97.8%	<b>99.4%</b>
4 - 5	105.8%	101.4%	100.0%	95.5%	103.0%	100.0%	99.4%	109.9%	100.0%	97.5%	<b>100.7%</b>

 TRINITY ELEMENTARY SCHOOL  
 PROJECTED ENROLLMENT

GRADE	2017	2018	2019	2020	2021	2022	2023	2024	2025	2026	2027
	Actual										
KINDERGARTEN	124	126	123	126	124	124	124	123	123	122	122
FIRST	126	127	129	126	129	127	127	127	126	126	125
SECOND	138	129	130	132	129	132	130	130	130	129	129
THIRD	167	151	145	146	149	144	149	146	146	146	145
FOURTH	135	167	150	144	145	148	143	148	145	145	145
FIFTH	158	136	168	151	145	146	149	144	149	146	146
TOTAL	848	836	845	825	821	821	822	818	819	814	812
% CHANGE		-1.4%	1.1%	-2.4%	-0.5%	0.0%	0.1%	-0.5%	0.1%	-0.6%	-0.2%

TRINITY ELEMENTARY SCHOOL  
PROJECTED ENROLLMENT - SECTIONAL ANALYSIS

based on the maximum class size of 25 for K - 5

GRADE	2017	2018	2019	2020	2021	2022	2023	2024	2025	2026	2027
	Actual										
Kindergarten (25)	124	126	123	126	124	124	124	123	123	122	122
# of Sections	6	6	5	6	5	5	5	5	5	5	5
Avg Section Size	20.7	21.0	24.6	21.0	24.8	24.8	24.8	24.6	24.6	24.4	24.4
First (25)	126	127	129	126	129	127	127	127	126	126	125
# of Sections	6	6	6	6	6	6	6	6	6	6	5
Avg Section Size	21.0	21.2	21.5	21.0	21.5	21.2	21.2	21.2	21.0	21.0	25.0
Second (25)	137	124	125	127	124	127	125	125	125	124	124
# of Sections	7	5	5	6	5	6	5	5	5	5	5
Avg Section Size	19.6	24.8	25.0	21.2	24.8	21.2	25.0	25.0	25.0	24.8	24.8
Third (25)	160	150	140	141	144	139	144	141	141	141	140
# of Sections	7	6	6	6	6	6	6	6	6	6	6
Avg Section Size	22.9	25.0	23.3	23.5	24.0	23.2	24.0	23.5	23.5	23.5	23.3
Fourth (25)	127	160	149	139	140	143	138	143	140	140	140
# of Sections	6	7	6	6	6	6	6	6	6	6	6
Avg Section Size	21.2	22.9	24.8	23.2	23.3	23.8	23.0	23.8	23.3	23.3	23.3
Fifth (25)	150	128	161	150	140	141	144	139	144	141	141
# of Sections	7	6	7	6	6	6	6	6	6	6	6
Avg Section Size	21.4	21.3	23.0	25.0	23.3	23.5	24.0	23.2	24.0	23.5	23.5
Graded SC SPED	24	21	18	16	20	20	20	20	20	20	20
# of Sections	2	2	2	2	2	2	2	2	2	2	2
Total Enrollment	848	836	845	825	821	821	822	818	819	814	812
Total Sections	41	38	37	38	36	37	36	36	36	36	35
Avg Section Size	21.1	22.7	23.7	22.5	23.6	22.9	23.7	23.5	23.6	23.4	24.1

Note: Projections for SC SPED students represent placeholders based on current student distribution by grade and the students-to-teacher class ratio.

Note: The boxed cells indicate the class average is approaching the maximum class size limit for the grade level.

WILLIAM B. WARD ELEMENTARY SCHOOL  
 HISTORICAL ENROLLMENT

GRADE	2007	2008	FDK begins 2009	2010	2011	2012	2013	2014	2015	2016	2017
	KINDERGARTEN	153	149	156	139	152	145	153	180	173	174
FIRST	172	160	148	160	149	156	157	160	182	171	171
SECOND	163	161	159	159	169	158	159	163	158	180	168
THIRD	184	187	198	184	182	185	179	167	169	170	196
FOURTH	203	177	180	179	168	171	162	173	163	174	163
FIFTH	192	207	179	181	174	176	170	165	180	165	180
UNGRADED	8	16	0	9	9	8	6	6	6	5	7
TOTAL	1,075	1,057	1,020	1,011	1,003	999	986	1,014	1,031	1,039	1,057
% CHANGE		-1.7%	-3.5%	-0.9%	-0.8%	-0.4%	-1.3%	2.8%	1.7%	0.8%	1.7%
W. B. Ward ES Migration	07 - 08	08 - 09	09 - 10	10 - 11	11 - 12	12 - 13	13 - 14	14 - 15	15 - 16	16 - 17	<b>AVERAGE</b>
K - 1	104.6%	99.3%	102.6%	107.2%	102.6%	108.3%	104.6%	101.1%	98.8%	98.3%	<b>100.7%</b>
1 - 2	93.6%	99.4%	107.4%	105.6%	106.0%	101.9%	103.8%	98.8%	98.9%	98.2%	<b>99.1%</b>
2 - 3	114.7%	123.0%	115.7%	114.5%	109.5%	113.3%	105.0%	103.7%	107.6%	108.9%	<b>108.2%</b>
3 - 4	96.2%	96.3%	90.4%	91.3%	94.0%	87.6%	96.6%	97.6%	103.0%	95.9%	<b>96.1%</b>
4 - 5	102.0%	101.1%	100.6%	97.2%	104.8%	99.4%	101.9%	104.0%	101.2%	103.4%	<b>102.6%</b>

 WILLIAM B. WARD ELEMENTARY SCHOOL  
 PROJECTED ENROLLMENT

GRADE	2017	2018	2019	2020	2021	2022	2023	2024	2025	2026	2027
	Actual										
KINDERGARTEN	172	173	166	170	169	169	168	168	166	167	167
FIRST	171	174	175	168	172	171	171	170	170	168	169
SECOND	168	168	172	172	166	169	168	168	167	167	166
THIRD	196	179	183	188	187	181	184	183	183	182	181
FOURTH	163	189	173	176	182	181	175	178	176	176	175
FIFTH	180	168	195	179	181	187	186	179	182	180	180
UNGRADED	7	7	7	7	6	6	6	6	6	6	6
TOTAL	1,057	1,058	1,071	1,060	1,063	1,064	1,058	1,052	1,050	1,046	1,044
% CHANGE		0.1%	1.2%	-1.0%	0.3%	0.1%	-0.6%	-0.6%	-0.2%	-0.4%	-0.2%

WILLIAM B. WARD ELEMENTARY SCHOOL  
PROJECTED ENROLLMENT - SECTIONAL ANALYSIS

based on the maximum class size of 25 for K - 5

GRADE	2017	2018	2019	2020	2021	2022	2023	2024	2025	2026	2027
	Actual										
Kindergarten (25)	172	173	166	170	169	169	168	168	166	167	167
# of Sections	8	7	7	7	7	7	7	7	7	7	7
Avg Section Size	21.5	24.7	23.7	24.3	24.1	24.1	24.0	24.0	23.7	23.9	23.9
First (25)	171	174	175	168	172	171	171	170	170	168	169
# of Sections	8	7	7	7	7	7	7	7	7	7	7
Avg Section Size	21.4	24.9	25.0	24.0	24.6	24.4	24.4	24.3	24.3	24.0	24.1
Second (25)	168	161	165	165	159	162	161	161	160	160	159
# of Sections	8	7	7	7	7	7	7	7	7	7	7
Avg Section Size	21.0	23.0	23.6	23.6	22.7	23.1	23.0	23.0	22.9	22.9	22.7
Third (25)	185	179	176	181	180	174	177	176	176	175	174
# of Sections	7	8	8	8	8	7	8	8	8	7	7
Avg Section Size	26.4	22.4	22.0	22.6	22.5	24.9	22.1	22.0	22.0	25.0	24.9
Fourth (25)	157	178	173	169	175	174	168	171	169	169	168
# of Sections	7	8	7	7	7	7	7	7	7	7	7
Avg Section Size	22.4	22.3	24.7	24.1	25.0	24.9	24.0	24.4	24.1	24.1	24.0
Fifth (25)	169	162	184	179	174	180	179	172	175	173	173
# of Sections	7	7	8	8	7	8	8	7	7	7	7
Avg Section Size	24.1	23.1	23.0	22.4	24.9	22.5	22.4	24.6	25.0	24.7	24.7
Graded SC SPED	28	24	25	21	28	28	28	28	28	28	28
UNGRADED	7	7	7	7	6	6	6	6	6	6	6
# of Sections	3	3	3	3	3	3	3	3	3	3	3
Total Enrollment	1,057	1,058	1,071	1,060	1,063	1,064	1,058	1,052	1,050	1,046	1,044
Total Sections	48	47	47	47	46	46	47	46	46	45	45
Avg Section Size	22.8	23.4	23.7	23.5	24.0	24.0	23.3	23.7	23.7	24.1	24.0

Note: Projections for SC SPED students represent placeholders based on current student distribution by grade and the students-to-teacher class ratio.

Note: The boxed cells indicate the class average is approaching the maximum class size limit for the grade level.



DANIEL WEBSTER ELEMENTARY SCHOOL  
 HISTORICAL ENROLLMENT

GRADE	2007	2008	FDK begins 2009	2010	2011	2012	2013	2014	2015	2016	2017
	KINDERGARTEN	46	54	68	68	62	69	68	70	73	70
FIRST	60	66	72	79	67	66	65	70	74	69	65
SECOND	86	70	74	72	84	81	70	69	65	72	73
THIRD	96	94	90	96	92	97	95	92	81	83	84
FOURTH	87	84	105	113	116	116	115	118	114	99	108
FIFTH	88	92	113	111	112	121	109	119	111	116	105
UNGRADED	0	5	4	5	8	6	3	4	1	1	0
TOTAL	463	465	526	544	541	556	525	542	519	510	497
% CHANGE		0.4%	13.1%	3.4%	-0.6%	2.8%	-5.6%	3.2%	-4.2%	-1.7%	-2.5%
D. Webster ES Migration	07 - 08	08 - 09	09 - 10	10 - 11	11 - 12	12 - 13	13 - 14	14 - 15	15 - 16	16 - 17	<b>AVERAGE</b>
K - 1	143.5%	133.3%	116.2%	98.5%	106.5%	94.2%	102.9%	105.7%	94.5%	92.9%	<b>98.0%</b>
1 - 2	116.7%	112.1%	100.0%	106.3%	120.9%	106.1%	106.2%	92.9%	97.3%	105.8%	<b>101.6%</b>
2 - 3	109.3%	128.6%	129.7%	127.8%	115.5%	117.3%	131.4%	117.4%	127.7%	116.7%	<b>118.9%</b>
3 - 4	87.5%	111.7%	125.6%	120.8%	126.1%	118.6%	124.2%	123.9%	122.2%	130.1%	<b>125.4%</b>
4 - 5	105.7%	134.5%	105.7%	99.1%	104.3%	94.0%	103.5%	94.1%	101.8%	106.1%	<b>101.3%</b>

 DANIEL WEBSTER ELEMENTARY SCHOOL  
 PROJECTED ENROLLMENT

GRADE	2017	2018	2019	2020	2021	2022	2023	2024	2025	2026	2027
	Actual										
KINDERGARTEN	62	66	64	66	65	65	65	65	64	64	64
FIRST	65	61	65	63	65	64	64	64	64	63	63
SECOND	73	66	62	66	64	66	65	65	65	65	64
THIRD	84	85	78	75	78	76	78	77	77	77	77
FOURTH	108	105	107	98	94	98	95	98	97	97	97
FIFTH	105	109	106	108	99	95	99	96	99	98	98
TOTAL	497	492	482	476	465	464	466	465	466	464	463
% CHANGE		-1.0%	-2.0%	-1.2%	-2.3%	-0.2%	0.4%	-0.2%	0.2%	-0.4%	-0.2%

DANIEL WEBSTER ELEMENTARY SCHOOL  
PROJECTED ENROLLMENT - SECTIONAL ANALYSIS

based on the maximum class size of 25 for K - 5

GRADE	2017 Actual	2018	2019	2020	2021	2022	2023	2024	2025	2026	2027
Kindergarten (25)	<b>62</b>	66	64	66	65	65	65	65	64	64	64
# of Sections	<b>3</b>	3	3	3	3	3	3	3	3	3	3
Avg Section Size	<b>20.7</b>	22.0	21.3	22.0	21.7	21.7	21.7	21.7	21.3	21.3	21.3
First (25)	<b>65</b>	61	65	63	65	64	64	64	64	63	63
# of Sections	<b>3</b>	3	3	3	3	3	3	3	3	3	3
Avg Section Size	<b>21.7</b>	20.3	21.7	21.0	21.7	21.3	21.3	21.3	21.3	21.0	21.0
Second (25)	<b>73</b>	66	62	66	64	66	65	65	65	65	64
# of Sections	<b>3</b>	3	3	3	3	3	3	3	3	3	3
Avg Section Size	<b>24.3</b>	22.0	20.7	22.0	21.3	22.0	21.7	21.7	21.7	21.7	21.3
Third (25)	<b>80</b>	82	75	72	75	73	75	74	74	74	74
# of Sections	<b>4</b>	4	3	3	3	3	3	3	3	3	3
Avg Section Size	<b>20.0</b>	20.5	25.0	24.0	25.0	24.3	25.0	24.7	24.7	24.7	24.7
Fourth (25)	<b>105</b>	71	74	65	61	65	62	65	64	64	64
# of Sections	<b>4</b>	3	3	3	3	3	3	3	3	3	3
Avg Section Size	<b>26.3</b>	23.7	24.7	21.7	20.3	21.7	20.7	21.7	21.3	21.3	21.3
Fifth (25)	<b>105</b>	76	72	75	66	62	66	63	66	65	65
# of Sections	<b>4</b>	4	3	3	3	3	3	3	3	3	3
Avg Section Size	<b>26.3</b>	19.0	24.0	25.0	22.0	20.7	22.0	21.0	22.0	21.7	21.7
District Kaleidoscope		60	60	60	60	60	60	60	60	60	60
# of Sections	<b>2</b>	2	2	2	2	2	2	2	2	2	2
Graded SC SPED	<b>7</b>	10	10	9	9	9	9	9	9	9	9
# of Sections	<b>1</b>	1	1	1	1	1	1	1	1	1	1
Total Enrollment	<b>497</b>	492	482	476	465	464	466	465	466	464	463
Total Sections	<b>24</b>	23	21	21	21	21	21	21	21	21	21
Avg Section Size	<b>23.2</b>	21.3	22.9	22.6	22.0	21.9	22.1	22.0	22.1	21.9	21.9

Note: As per the district, Kaleidoscope is a district gifted program for grades 4 and 5 with a cap of 30 students each class.

Note: Current year (2017) Kaleidoscope students are in the grade level counts (grades 4 and 5).

Note: Projections of Kaleidoscope classes represent a space holder of 60 seats for grades 4 and 5.

Note: Projections for SC SPED students represent placeholders based on current student distribution by grade and the students-to-teacher class ratio.

Note: The boxed cells indicate the class average is approaching the maximum class size limit for the grade level.

CITY SCHOOL DISTRICT OF NEW ROCHELLE  
DISTRICT ELEMENTARY SECTIONS - SUMMARY

based on the maximum class size of 25 for K - 5

GRADE	2017	2018	2019	2020	2021	2022	2023	2024	2025	2026	2027
	Actual										
Kindergarten (25)	<b>760</b>	771	748	766	756	756	755	752	748	747	744
# of Sections	<b>37</b>	34	32	34	32	32	32	32	32	32	32
Avg Section Size	<b>20.5</b>	22.5	23.3	22.3	23.5	23.5	23.5	23.4	23.3	23.2	23.2
First (25)	<b>748</b>	768	779	756	774	764	764	763	760	756	755
# of Sections	<b>38</b>	34	35	33	35	34	34	34	33	33	32
Avg Section Size	<b>19.9</b>	22.4	22.0	22.9	21.9	22.5	22.5	22.5	23.0	22.9	23.4
Second (25)	<b>806</b>	718	737	748	726	743	733	733	732	729	726
# of Sections	<b>38</b>	31	31	33	32	33	32	32	32	32	32
Avg Section Size	<b>21.5</b>	23.2	23.5	22.6	22.5	22.4	22.7	22.7	22.7	22.6	22.5
Third (25)	<b>823</b>	795	712	736	743	721	738	728	728	727	724
# of Sections	<b>36</b>	35	31	33	32	31	32	32	32	31	31
Avg Section Size	<b>22.5</b>	22.7	23.3	22.3	23.4	23.2	23.3	22.9	22.9	23.4	23.3
Fourth (25)	<b>707</b>	792	764	681	705	712	690	707	697	697	696
# of Sections	<b>34</b>	34	32	29	31	31	31	31	31	31	31
Avg Section Size	<b>21.0</b>	23.4	23.9	23.4	22.3	22.7	22.0	22.6	22.3	22.3	22.2
Fifth (25)	<b>747</b>	678	793	765	682	706	713	691	708	698	698
# of Sections	<b>34</b>	31	34	33	29	32	32	30	31	31	31
Avg Section Size	<b>22.1</b>	21.7	23.4	23.4	23.3	21.8	22.2	22.7	22.6	22.3	22.3
District Kaleidoscope at Webster		60	60	60	60	60	60	60	60	60	60
# of Sections	<b>2</b>	2	2	2	2	2	2	2	2	2	2
Graded SC SPED	<b>157</b>	149	145	139	147	150	153	153	153	153	153
UNGRADED	<b>20</b>	20	20	20	19	19	19	19	19	19	19
# of Sections	<b>18</b>	18	18	18	18	18	18	18	18	18	18
Total K - 5 Enrollment	<b>4,768</b>	4,751	4,758	4,671	4,612	4,631	4,625	4,606	4,605	4,586	4,575
Total K - 5 Sections	<b>237</b>	219	215	215	211	213	213	211	211	210	209
Avg Section Size	<b>21.2</b>	22.6	23.2	22.8	22.8	22.7	22.7	22.8	22.8	22.8	22.8

Note: As per the district, Kaleidoscope is a district gifted program for grades 4 and 5 with a cap of 30 students each class.

Note: Current year (2017) Kaleidoscope students are in the grade level counts (grades 4 and 5).

Note: Projections of Kaleidoscope classes represent a space holder of 60 seats for grades 4 and 5.

Note: Projections for SC SPED students represent placeholders based on current student distribution by grade and the students-to-teacher class ratio.

ALBERT LEONARD MIDDLE SCHOOL  
 HISTORICAL ENROLLMENT

GRADE	2007	2008	2009	2010	2011	2012	2013	2014	2015	2016	2017
SIXTH	404	404	401	380	399	405	422	395	412	419	402
SEVENTH	420	425	419	438	385	401	418	423	398	397	428
EIGHTH	371	424	416	408	432	388	387	410	430	404	399
UNGRADED	0	0	4	2	5	6	9	3	3	1	7
TOTAL	1,195	1,253	1,240	1,228	1,221	1,200	1,236	1,231	1,243	1,221	1,236
% CHANGE		4.9%	-1.0%	-1.0%	-0.6%	-1.7%	3.0%	-0.4%	1.0%	-1.8%	1.2%

A. Leonard MS Migration	07 - 08	08 - 09	09 - 10	10 - 11	11 - 12	12 - 13	13 - 14	14 - 15	15 - 16	16 - 17	AVERAGE
5 - 6	100.7%	91.1%	95.7%	100.3%	100.5%	101.0%	101.0%	99.0%	102.4%	105.0%	<b>101.9%</b>
6 - 7	105.2%	103.7%	109.2%	101.3%	100.5%	103.2%	100.2%	100.8%	96.4%	102.1%	<b>100.5%</b>
7 - 8	101.0%	97.9%	97.4%	98.6%	100.8%	96.5%	98.1%	101.7%	101.5%	100.5%	<b>100.4%</b>

 ALBERT LEONARD MIDDLE SCHOOL  
 PROJECTED ENROLLMENT

Feeder Schools: Davis ES, Ward ES and Webster ES

GRADE	2017	2018	2019	2020	2021	2022	2023	2024	2025	2026	2027
	Actual										
SIXTH	402	428	399	432	411	383	407	405	393	401	398
SEVENTH	428	404	430	402	434	414	385	409	407	395	403
EIGHTH	399	429	405	431	403	435	415	386	410	408	396
UNGRADED	7	8	8	8	8	8	8	8	8	8	8
TOTAL	1,236	1,269	1,242	1,273	1,256	1,240	1,215	1,208	1,218	1,212	1,205
% CHANGE		2.7%	-2.1%	2.5%	-1.3%	-1.3%	-2.0%	-0.6%	0.8%	-0.5%	-0.6%

ISAAC E. YOUNG MIDDLE SCHOOL  
 HISTORICAL ENROLLMENT

GRADE	2007	2008	2009	2010	2011	2012	2013	2014	2015	2016	2017
SIXTH	378	367	339	395	385	339	358	409	372	404	383
SEVENTH	343	393	372	352	393	387	339	364	417	386	407
EIGHTH	329	338	410	388	351	386	396	345	369	405	384
UNGRADED	16	20	20	18	26	32	44	39	36	29	16
TOTAL	1,066	1,118	1,141	1,153	1,155	1,144	1,137	1,157	1,194	1,224	1,190
% CHANGE		4.9%	2.1%	1.1%	0.2%	-1.0%	-0.6%	1.8%	3.2%	2.5%	-2.8%
I. E. Young MS Migration	07 - 08	08 - 09	09 - 10	10 - 11	11 - 12	12 - 13	13 - 14	14 - 15	15 - 16	16 - 17	<b>AVERAGE</b>
5 - 6	97.6%	98.0%	106.8%	101.9%	93.9%	101.7%	103.8%	95.9%	92.0%	90.8%	<b>94.6%</b>
6 - 7	104.0%	101.4%	103.8%	99.5%	100.5%	100.0%	101.7%	102.0%	103.8%	100.7%	<b>101.6%</b>
7 - 8	98.5%	104.3%	104.3%	99.7%	98.2%	102.3%	101.8%	101.4%	97.1%	99.5%	<b>99.9%</b>

 ISAAC E. YOUNG MIDDLE SCHOOL  
 PROJECTED ENROLLMENT

Feeder Schools: Columbus ES, Jefferson ES and Trinity ES

GRADE	2017	2018	2019	2020	2021	2022	2023	2024	2025	2026	2027
	Actual										
SIXTH	383	346	329	406	390	341	340	352	343	351	345
SEVENTH	407	389	352	334	413	396	347	346	358	349	357
EIGHTH	384	406	388	351	333	412	395	346	345	357	348
UNGRADED	16	18	18	18	17	17	17	17	17	17	17
TOTAL	1,190	1,159	1,087	1,109	1,153	1,166	1,099	1,061	1,063	1,074	1,067
% CHANGE		-2.6%	-6.2%	2.0%	4.0%	1.1%	-5.7%	-3.5%	0.2%	1.0%	-0.7%

=====  
 NEW ROCHELLE HIGH SCHOOL  
 HISTORICAL ENROLLMENT  
 =====

GRADE	2007	2008	2009	2010	2011	2012	2013	2014	2015	2016	2017
NINTH	1,134	859	979	1,081	1,016	1,023	991	983	959	1,062	1,040
TENTH	781	970	752	830	836	788	857	872	815	819	895
ELEVENTH	662	721	870	689	754	759	684	703	680	688	705
TWELFTH	778	803	804	769	713	764	855	808	837	724	796
UNGRADED	49	51	49	44	45	55	40	35	39	50	47
TOTAL	3,404	3,404	3,454	3,413	3,364	3,389	3,427	3,401	3,330	3,343	3,483
% CHANGE		0.0%	1.5%	-1.2%	-1.4%	0.7%	1.1%	-0.8%	-2.1%	0.4%	4.2%
HS MIGRATION	07 - 08	08 - 09	09 - 10	10 - 11	11 - 12	12 - 13	13 - 14	14 - 15	15 - 16	16 - 17	<b>AVERAGE</b>
9 - 10	85.5%	87.5%	84.8%	77.3%	77.6%	83.8%	88.0%	82.9%	85.4%	84.3%	<b>84.9%</b>
10 - 11	92.3%	89.7%	91.6%	90.8%	90.8%	86.8%	82.0%	78.0%	84.4%	86.1%	<b>84.8%</b>
11 - 12	121.3%	111.5%	88.4%	103.5%	101.3%	112.6%	118.1%	119.1%	106.5%	115.7%	<b>114.4%</b>

 =====  
 NEW ROCHELLE HIGH SCHOOL  
 PROJECTED ENROLLMENT  
 =====

GRADE	2017	2018	2019	2020	2021	2022	2023	2024	2025	2026	2027
	Actual										
NINTH	1,040	1,011	1,078	1,024	1,010	950	1,094	1,046	945	975	988
TENTH	895	883	858	915	869	857	806	928	888	802	827
ELEVENTH	705	759	749	728	776	737	727	684	787	753	680
TWELFTH	796	807	868	857	833	888	843	832	783	900	861
UNGRADED	47	48	48	48	49	49	48	48	47	47	47
TOTAL	3,483	3,508	3,601	3,572	3,537	3,481	3,518	3,538	3,450	3,477	3,403
% CHANGE		0.7%	2.7%	-0.8%	-1.0%	-1.6%	1.1%	0.6%	-2.5%	0.8%	-2.1%

# Appendix B

## Projected Enrollment with New Housing - PUMS Multipliers Applied

CITY SCHOOL DISTRICT OF NEW ROCHELLE  
PROJECTED DISTRICT ENROLLMENT

*with Impact of 14 New Housing Projects, Anticipated Completion in 2018-2019*

GRADE	2017	2018	2019	2020	2021	2022	2023	2024	2025	2026	2027
	Actual										
KINDERGARTEN	781	792	773	790	776	776	775	772	768	767	764
FIRST	764	789	804	784	798	784	784	783	780	776	775
SECOND	825	746	774	788	765	779	765	765	764	761	758
THIRD	852	814	741	767	778	755	769	755	755	754	751
FOURTH	739	851	817	743	766	777	754	768	754	754	753
FIFTH	787	740	856	821	744	767	778	755	769	755	755
SIXTH	785	774	730	844	807	732	754	765	743	756	743
SEVENTH	835	793	784	739	853	816	740	762	773	751	764
EIGHTH	783	835	795	785	739	853	816	740	762	773	751
NINTH	1,040	1,011	1,080	1,028	1,014	954	1,102	1,054	956	984	998
TENTH	895	883	860	918	872	861	810	935	895	811	835
ELEVENTH	705	759	751	731	779	740	730	687	793	759	688
TWELFTH	796	807	869	860	836	891	847	835	786	907	868
UNGRADED	90	94	94	94	93	93	92	92	91	91	91
TOTAL K -12	10,677	10,688	10,728	10,692	10,620	10,578	10,516	10,468	10,389	10,399	10,294
% CHANGE		0.1%	0.4%	-0.3%	-0.7%	-0.4%	-0.6%	-0.5%	-0.8%	0.1%	-1.0%



## Projected Enrollment with New Housing - PUMS Multipliers Applied

CITY SCHOOL DISTRICT OF NEW ROCHELLE *with Impact of 14 New Housing Projects, Anticipated Completion in 2018-2019*  
 PROJECTED DISTRICT ENROLLMENT BY GRADE CONFIGURATION

GRADE	2017	2018	2019	2020	2021	2022	2023	2024	2025	2026	2027
	Actual										
KINDERGARTEN	781	792	773	790	776	776	775	772	768	767	764
FIRST	764	789	804	784	798	784	784	783	780	776	775
SECOND	825	746	774	788	765	779	765	765	764	761	758
THIRD	852	814	741	767	778	755	769	755	755	754	751
FOURTH	739	851	817	743	766	777	754	768	754	754	753
FIFTH	787	740	856	821	744	767	778	755	769	755	755
UNGRADED	20	20	20	20	19	19	19	19	19	19	19
TOTAL K - 5	4,768	4,752	4,785	4,713	4,646	4,657	4,644	4,617	4,609	4,586	4,575
% CHANGE		-0.3%	0.7%	-1.5%	-1.4%	0.2%	-0.3%	-0.6%	-0.2%	-0.5%	-0.2%
SIXTH	785	774	730	844	807	732	754	765	743	756	743
SEVENTH	835	793	784	739	853	816	740	762	773	751	764
EIGHTH	783	835	795	785	739	853	816	740	762	773	751
UNGRADED	23	26	26	26	25	25	25	25	25	25	25
TOTAL 6 - 8	2,426	2,428	2,335	2,394	2,424	2,426	2,335	2,292	2,303	2,305	2,283
% CHANGE		0.1%	-3.8%	2.5%	1.3%	0.1%	-3.8%	-1.8%	0.5%	0.1%	-1.0%
NINTH	1,040	1,011	1,080	1,028	1,014	954	1,102	1,054	956	984	998
TENTH	895	883	860	918	872	861	810	935	895	811	835
ELEVENTH	705	759	751	731	779	740	730	687	793	759	688
TWELFTH	796	807	869	860	836	891	847	835	786	907	868
UNGRADED	47	48	48	48	49	49	48	48	47	47	47
TOTAL 9 - 12	3,483	3,508	3,608	3,585	3,550	3,495	3,537	3,559	3,477	3,508	3,436
% CHANGE		0.7%	2.9%	-0.6%	-1.0%	-1.5%	1.2%	0.6%	-2.3%	0.9%	-2.1%
TOTAL K - 12	10,677	10,688	10,728	10,692	10,620	10,578	10,516	10,468	10,389	10,399	10,294
% CHANGE		0.1%	0.4%	-0.3%	-0.7%	-0.4%	-0.6%	-0.5%	-0.8%	0.1%	-1.0%

HENRY BARNARD EARLY CHILDHOOD CENTER  
 HISTORICAL ENROLLMENT

GRADE	2007	2008	FDK begins 2009	2010	2011	2012	2013	2014	2015	2016	2017
KINDERGARTEN	100	110	116	111	101	108	102	114	87	103	106
FIRST	87	94	100	98	103	100	117	91	100	84	97
SECOND	76	81	85	87	81	85	105	91	67	85	70
UNGRADED	14	0	0	4	2	3	4	1	2	1	1
TOTAL K - 2	277	285	301	300	287	296	328	297	256	273	274
% CHANGE		2.9%	5.6%	-0.3%	-4.3%	3.1%	10.8%	-9.5%	-13.8%	6.6%	0.4%
H. Barnad CC Migration	07 - 08	08 - 09	09 - 10	10 - 11	11 - 12	12 - 13	13 - 14	14 - 15	15 - 16	16 - 17	<b>AVERAGE</b>
K - 1	94.0%	90.9%	84.5%	92.8%	99.0%	108.3%	89.2%	87.7%	96.6%	94.2%	<b>94.3%</b>
1 - 2	93.1%	90.4%	87.0%	82.7%	82.5%	105.0%	77.8%	73.6%	85.0%	83.3%	<b>83.4%</b>

 HENRY BARNARD EARLY CHILDHOOD CENTER  
 PROJECTED ENROLLMENT

GRADE	2017	2018	2019	2020	2021	2022	2023	2024	2025	2026	2027
	Actual										
KINDERGARTEN	106	103	100	102	101	101	101	100	100	100	99
FIRST	97	100	97	94	96	95	95	95	94	94	94
SECOND	70	81	83	81	78	80	79	79	79	78	78
UNGRADED	1	1	1	1	1	1	1	1	1	1	1
TOTAL K - 2	274	285	281	278	276	277	276	275	274	273	272
% CHANGE		4.0%	-1.4%	-1.1%	-0.7%	0.4%	-0.4%	-0.4%	-0.4%	-0.4%	-0.4%

HENRY BARNARD EARLY CHILDHOOD CENTER  
 PROJECTED ENROLLMENT - SECTIONAL ANALYSIS

based on the maximum class size of 25 for K - 2

GRADE	2017	2018	2019	2020	2021	2022	2023	2024	2025	2026	2027
	Actual										
Kindergarten (25)	<b>91</b>	92	89	91	90	90	90	89	89	89	88
# of Sections	<b>4</b>	4	4	4	4	4	4	4	4	4	4
Avg Section Size	<b>22.8</b>	23.0	22.3	22.8	22.5	22.5	22.5	22.3	22.3	22.3	22.0
First (25)	<b>87</b>	85	86	83	85	84	84	84	83	83	83
# of Sections	<b>4</b>	4	4	4	4	4	4	4	4	4	4
Avg Section Size	<b>21.8</b>	21.3	21.5	20.8	21.3	21.0	21.0	21.0	20.8	20.8	20.8
Second (25)	<b>64</b>	71	68	70	67	69	68	68	68	67	67
# of Sections	<b>3</b>	3	3	3	3	3	3	3	3	3	3
Avg Section Size	<b>21.3</b>	23.7	22.7	23.3	22.3	23.0	22.7	22.7	22.7	22.3	22.3
Graded SC SPED	<b>31</b>	36	37	33	33	33	33	33	33	33	33
UNGRADED	<b>1</b>	1	1	1	1	1	1	1	1	1	1
# of Sections	<b>4</b>	4	4	4	4	4	4	4	4	4	4
Total K - 2 Enrollment	<b>274</b>	285	281	278	276	277	276	275	274	273	272
Total K - 2 Sections	<b>15</b>	15	15	15	15	15	15	15	15	15	15
Avg Section Size	<b>21.9</b>	22.6	22.1	22.3	22.0	22.2	22.1	22.0	21.9	21.8	21.7

Note: Projections for SC SPED students represent placeholders based on current student distribution by grade and the students-to-teacher class ratio.

Note: The boxed cells indicate the class average is approaching the maximum class size limit for the grade level.

**Projected Enrollment with New Housing - PUMS Multipliers Applied**

COLUMBUS ELEMENTARY SCHOOL		<i>with Impact of New Housing Projects, Anticipated Completion in 2018-2019</i>									
PROJECTED ENROLLMENT											
GRADE	2017	2018	2019	2020	2021	2022	2023	2024	2025	2026	2027
	Actual										
KINDERGARTEN	123	122	122	122	120	120	120	119	119	119	118
FIRST	114	131	133	130	130	128	128	128	127	127	127
SECOND	154	110	129	128	124	125	123	123	123	122	122
THIRD	165	161	121	138	137	131	133	131	131	131	130
FOURTH	119	165	162	121	139	137	131	133	131	131	131
FIFTH	121	116	164	158	118	135	133	128	130	128	128
UNGRADED	6	6	6	6	6	6	6	6	6	6	6
TOTAL	802	811	837	803	774	782	774	768	767	764	762
% CHANGE		1.1%	3.2%	-4.1%	-3.6%	1.0%	-1.0%	-0.8%	-0.1%	-0.4%	-0.3%

## Projected Enrollment with New Housing - PUMS Multipliers Applied

### COLUMBUS ELEMENTARY SCHOOL PROJECTED ENROLLMENT - SECTIONAL ANALYSIS

### *with Impact of New Housing Projects, Anticipated Completion in 2018-2019*

based on the maximum class size of 25 for K - 5

GRADE	2017	2018	2019	2020	2021	2022	2023	2024	2025	2026	2027
	Actual										
Kindergarten (25)	<b>120</b>	120	120	120	118	118	118	117	117	117	116
# of Sections	<b>6</b>	5	5	5	5	5	5	5	5	5	5
Avg Section Size	<b>20.0</b>	24.0	24.0	24.0	23.6	23.6	23.6	23.4	23.4	23.4	23.2
First (25)	<b>112</b>	128	131	128	128	126	126	126	125	125	125
# of Sections	<b>7</b>	6	6	6	6	6	6	6	5	5	5
Avg Section Size	<b>16.0</b>	21.3	21.8	21.3	21.3	21.0	21.0	21.0	25.0	25.0	25.0
Second (25)	<b>153</b>	108	126	126	122	123	121	121	121	120	120
# of Sections	<b>7</b>	5	6	6	5	5	5	5	5	5	5
Avg Section Size	<b>21.9</b>	21.6	21.0	21.0	24.4	24.6	24.2	24.2	24.2	24.0	24.0
Third (25)	<b>165</b>	160	119	135	135	129	131	129	129	129	128
# of Sections	<b>7</b>	7	5	6	6	6	6	6	6	6	6
Avg Section Size	<b>23.6</b>	22.9	23.8	22.5	22.5	21.5	21.8	21.5	21.5	21.5	21.3
Fourth (25)	<b>118</b>	165	161	119	136	135	129	131	129	129	129
# of Sections	<b>6</b>	7	7	5	6	6	6	6	6	6	6
Avg Section Size	<b>19.7</b>	23.6	23.0	23.8	22.7	22.5	21.5	21.8	21.5	21.5	21.5
Fifth (25)	<b>115</b>	115	164	157	116	132	131	126	128	126	126
# of Sections	<b>6</b>	5	7	7	5	6	6	6	6	6	6
Avg Section Size	<b>19.2</b>	23.0	23.4	22.4	23.2	22.0	21.8	21.0	21.3	21.0	21.0
Graded SC SPED	<b>13</b>	9	10	12	13	13	12	12	12	12	12
UNGRADED	<b>6</b>	6	6	6	6	6	6	6	6	6	6
# of Sections	<b>2</b>	2	2	2	2	2	2	2	2	2	2
Total Enrollment	<b>802</b>	811	837	803	774	782	774	768	767	764	762
Total Sections	<b>41</b>	37	38	37	35	36	36	36	35	35	35
Avg Section Size	<b>20.0</b>	22.7	22.8	22.5	23.0	22.5	22.3	22.2	22.8	22.7	22.7

Note: Projections for SC SPED students represent placeholders based on current student distribution by grade and the students-to-teacher class ratio.

Note: The boxed cells indicate the class average is approaching the maximum class size limit for the grade level.

GEORGE M. DAVIS ELEMENTARY SCHOOL  
 HISTORICAL ENROLLMENT

GRADE	2007	2008	FDK begins 2009	2010	2011	2012	2013	2014	2015	2016	2017
	KINDERGARTEN	96	70	97	128	89	134	119	123	133	101
FIRST	99	104	85	103	125	96	135	121	130	133	100
SECOND	94	104	106	94	105	122	96	144	120	136	123
THIRD	97	103	129	115	112	121	138	112	158	129	136
FOURTH	138	122	107	116	118	105	129	122	104	138	116
FIFTH	121	141	105	106	117	121	112	132	118	102	136
UNGRADED	0	1	0	3	6	5	6	0	0	0	1
TOTAL	645	645	629	665	672	704	735	754	763	739	734
% CHANGE		0.0%	-2.5%	5.7%	1.1%	4.8%	4.4%	2.6%	1.2%	-3.1%	-0.7%
G. M. Davis ES Migration	07 - 08	08 - 09	09 - 10	10 - 11	11 - 12	12 - 13	13 - 14	14 - 15	15 - 16	16 - 17	<b>AVERAGE</b>
K - 1	108.3%	121.4%	106.2%	97.7%	107.9%	100.7%	101.7%	105.7%	100.0%	99.0%	<b>101.4%</b>
1 - 2	105.1%	101.9%	110.6%	101.9%	97.6%	100.0%	106.7%	99.2%	104.6%	92.5%	<b>100.1%</b>
2 - 3	109.6%	124.0%	108.5%	119.1%	115.2%	113.1%	116.7%	109.7%	107.5%	100.0%	<b>106.8%</b>
3 - 4	125.8%	103.9%	89.9%	102.6%	93.8%	106.6%	88.4%	92.9%	87.3%	89.9%	<b>90.0%</b>
4 - 5	102.2%	86.1%	99.1%	100.9%	102.5%	106.7%	102.3%	96.7%	98.1%	98.6%	<b>98.9%</b>

 GEORGE M. DAVIS ELEMENTARY SCHOOL  
 PROJECTED ENROLLMENT

GRADE	2017 Actual	2018	2019	2020	2021	2022	2023	2024	2025	2026	2027
KINDERGARTEN	122	117	114	117	115	115	115	115	114	114	113
FIRST	100	124	119	116	119	117	117	117	117	116	116
SECOND	123	100	124	119	116	119	117	117	117	117	116
THIRD	136	129	108	133	127	124	127	125	125	125	125
FOURTH	116	123	116	97	120	114	112	114	113	113	113
FIFTH	136	115	122	115	96	119	113	111	113	112	112
UNGRADED	1	1	1	1	1	1	1	1	1	1	1
TOTAL	734	709	704	698	694	709	702	700	700	698	696
% CHANGE		-3.4%	-0.7%	-0.9%	-0.6%	2.2%	-1.0%	-0.3%	0.0%	-0.3%	-0.3%

GEORGE M. DAVIS ELEMENTARY SCHOOL  
 PROJECTED ENROLLMENT - SECTIONAL ANALYSIS

based on the maximum class size of 25 for K - 5

GRADE	2017	2018	2019	2020	2021	2022	2023	2024	2025	2026	2027
	Actual										
Kindergarten (25)	<b>122</b>	117	114	117	115	115	115	115	114	114	113
# of Sections	<b>6</b>	5	5	5	5	5	5	5	5	5	5
Avg Section Size	<b>20.3</b>	23.4	22.8	23.4	23.0	23.0	23.0	23.0	22.8	22.8	22.6
First (25)	<b>100</b>	124	119	116	119	117	117	117	117	116	116
# of Sections	<b>5</b>	5	5	5	5	5	5	5	5	5	5
Avg Section Size	<b>20.0</b>	24.8	23.8	23.2	23.8	23.4	23.4	23.4	23.4	23.2	23.2
Second (25)	<b>123</b>	100	124	119	116	119	117	117	117	117	116
# of Sections	<b>6</b>	4	5	5	5	5	5	5	5	5	5
Avg Section Size	<b>20.5</b>	25.0	24.8	23.8	23.2	23.8	23.4	23.4	23.4	23.4	23.2
Third (25)	<b>136</b>	126	105	130	124	121	124	122	122	122	122
# of Sections	<b>6</b>	6	5	6	5	5	5	5	5	5	5
Avg Section Size	<b>22.7</b>	21.0	21.0	21.7	24.8	24.2	24.8	24.4	24.4	24.4	24.4
Fourth (25)	<b>112</b>	123	113	94	117	111	109	111	110	110	110
# of Sections	<b>6</b>	5	5	4	5	5	5	5	5	5	5
Avg Section Size	<b>18.7</b>	24.6	22.6	23.5	23.4	22.2	21.8	22.2	22.0	22.0	22.0
Fifth (25)	<b>128</b>	111	122	112	93	116	110	108	110	109	109
# of Sections	<b>6</b>	5	5	5	4	5	5	5	5	5	5
Avg Section Size	<b>21.3</b>	22.2	24.4	22.4	23.3	23.2	22.0	21.6	22.0	21.8	21.8
Graded SC SPED	<b>12</b>	7	6	9	9	9	9	9	9	9	9
UNGRADED	<b>1</b>	1	1	1	1	1	1	1	1	1	1
# of Sections	<b>1</b>	1	1	1	1	1	1	1	1	1	1
Total Enrollment	<b>734</b>	709	704	698	694	709	702	700	700	698	696
Total Sections	<b>36</b>	31	31	31	30	31	31	31	31	31	31
Avg Section Size	<b>20.6</b>	23.5	23.2	23.0	23.6	23.3	23.1	23.0	23.0	22.9	22.9

Note: Projections for SC SPED students represent placeholders based on current student distribution by grade and the students-to-teacher class ratio.

Note: The boxed cells indicate the class average is approaching the maximum class size limit for the grade level.

JEFFERSON ELEMENTARY SCHOOL  
HISTORICAL ENROLLMENT

GRADE	2007	2008	FDK begins 2009	2010	2011	2012	2013	2014	2015	2016	2017
	KINDERGARTEN	72	103	101	111	103	86	96	79	98	91
FIRST	80	82	109	102	114	101	79	97	89	95	91
SECOND	87	86	92	111	107	121	90	76	106	86	99
THIRD	91	94	79	97	110	107	132	120	84	104	104
FOURTH	86	85	86	90	90	105	106	130	127	83	98
FIFTH	87	83	89	82	85	95	102	103	123	118	87
UNGRADED	11	10	12	8	9	9	6	5	3	5	5
TOTAL	514	543	568	601	618	624	611	610	630	582	556
% CHANGE		5.6%	4.6%	5.8%	2.8%	1.0%	-2.1%	-0.2%	3.3%	-7.6%	-4.5%

Jefferson ES Migration	07 - 08	08 - 09	09 - 10	10 - 11	11 - 12	12 - 13	13 - 14	14 - 15	15 - 16	16 - 17	AVERAGE
K - 1	113.9%	105.8%	101.0%	102.7%	98.1%	91.9%	101.0%	112.7%	96.9%	100.0%	<b>100.5%</b>
1 - 2	107.5%	112.2%	101.8%	104.9%	106.1%	89.1%	96.2%	109.3%	96.6%	104.2%	<b>101.6%</b>
2 - 3	108.0%	91.9%	105.4%	99.1%	100.0%	109.1%	133.3%	110.5%	98.1%	120.9%	<b>111.9%</b>
3 - 4	93.4%	91.5%	113.9%	92.8%	95.5%	99.1%	98.5%	105.8%	98.8%	94.2%	<b>98.4%</b>
4 - 5	96.5%	104.7%	95.3%	94.4%	105.6%	97.1%	97.2%	94.6%	92.9%	104.8%	<b>98.4%</b>

JEFFERSON ELEMENTARY SCHOOL  
PROJECTED ENROLLMENT

GRADE	2017 Actual	2018	2019	2020	2021	2022	2023	2024	2025	2026	2027
KINDERGARTEN	72	84	82	83	82	82	82	82	82	81	81
FIRST	91	72	84	82	83	82	82	82	82	82	81
SECOND	99	92	73	85	83	84	83	83	83	83	83
THIRD	104	109	104	83	95	93	94	93	93	93	93
FOURTH	98	102	107	102	82	94	92	93	92	92	92
FIFTH	87	96	100	105	100	81	93	91	92	91	91
UNGRADED	5	5	5	5	5	5	5	5	5	5	5
TOTAL	556	560	555	545	530	521	531	529	529	527	526
% CHANGE		0.7%	-0.9%	-1.8%	-2.8%	-1.7%	1.9%	-0.4%	0.0%	-0.4%	-0.2%



JEFFERSON ELEMENTARY SCHOOL  
PROJECTED ENROLLMENT - SECTIONAL ANALYSIS

based on the maximum class size of 25 for K - 5

GRADE	2017 Actual	2018	2019	2020	2021	2022	2023	2024	2025	2026	2027
Kindergarten (25)	<b>69</b>	77	75	76	75	75	75	75	75	74	74
# of Sections	<b>4</b>	4	3	4	3	3	3	3	3	3	3
Avg Section Size	<b>17.3</b>	19.3	25.0	19.0	25.0	25.0	25.0	25.0	25.0	24.7	24.7
First (25)	<b>87</b>	69	77	75	76	75	75	75	75	75	74
# of Sections	<b>5</b>	3	4	3	4	3	3	3	3	3	3
Avg Section Size	<b>17.4</b>	23.0	19.3	25.0	19.0	25.0	25.0	25.0	25.0	25.0	24.7
Second (25)	<b>88</b>	88	70	78	76	77	76	76	76	76	76
# of Sections	<b>4</b>	4	3	4	4	4	4	4	4	4	4
Avg Section Size	<b>22.0</b>	22.0	23.3	19.5	19.0	19.3	19.0	19.0	19.0	19.0	19.0
Third (25)	<b>97</b>	98	100	80	88	86	87	86	86	86	86
# of Sections	<b>5</b>	4	4	4	4	4	4	4	4	4	4
Avg Section Size	<b>19.4</b>	24.5	25.0	20.0	22.0	21.5	21.8	21.5	21.5	21.5	21.5
Fourth (25)	<b>88</b>	95	96	98	79	87	85	86	85	85	85
# of Sections	<b>5</b>	4	4	4	4	4	4	4	4	4	4
Avg Section Size	<b>17.6</b>	23.8	24.0	24.5	19.8	21.8	21.3	21.5	21.3	21.3	21.3
Fifth (25)	<b>80</b>	86	93	94	96	78	86	84	85	84	84
# of Sections	<b>4</b>	4	4	4	4	4	4	4	4	4	4
Avg Section Size	<b>20.0</b>	21.5	23.3	23.5	24.0	19.5	21.5	21.0	21.3	21.0	21.0
Graded SC SPED	<b>42</b>	42	39	39	35	38	42	42	42	42	42
UNGRADED	<b>5</b>	5	5	5	5	5	5	5	5	5	5
# of Sections	<b>5</b>	5	5	5	5	5	5	5	5	5	5
Total Enrollment	<b>556</b>	560	555	545	530	521	531	529	529	527	526
Total Sections	<b>32</b>	28	27	28	28	27	27	27	27	27	27
Avg Section Size	<b>18.9</b>	22.3	23.3	21.9	21.5	22.0	22.3	22.2	22.2	22.1	22.0

Note: Projections for SC SPED students represent placeholders based on current student distribution by grade and the students-to-teacher class ratio.

Note: The boxed cells indicate the class average is approaching the maximum class size limit for the grade level.

**Projected Enrollment with New Housing - PUMS Multipliers Applied**

TRINITY ELEMENTARY SCHOOL  
PROJECTED ENROLLMENT

*with Impact of New Housing Projects, Anticipated Completion in 2018-2019*

GRADE	2017	2018	2019	2020	2021	2022	2023	2024	2025	2026	2027
	Actual										
KINDERGARTEN	124	127	125	128	124	124	124	123	123	122	122
FIRST	126	127	131	130	131	127	127	127	126	126	125
SECOND	138	129	131	135	133	134	130	130	130	129	129
THIRD	167	151	147	149	152	149	151	146	146	146	145
FOURTH	135	167	152	148	148	151	148	150	145	145	145
FIFTH	158	136	169	155	149	149	152	149	151	146	146
TOTAL	848	837	855	845	837	834	832	825	821	814	812
% CHANGE		-1.3%	2.2%	-1.2%	-0.9%	-0.4%	-0.2%	-0.8%	-0.5%	-0.9%	-0.2%

## Projected Enrollment with New Housing - PUMS Multipliers Applied

TRINITY ELEMENTARY SCHOOL

PROJECTED ENROLLMENT - SECTIONAL ANALYSIS

*with Impact of New Housing Projects, Anticipated Completion in 2018-2019*

based on the maximum class size of 25 for K - 5

GRADE	2017	2018	2019	2020	2021	2022	2023	2024	2025	2026	2027
	Actual										
Kindergarten (25)	<b>124</b>	127	125	128	124	124	124	123	123	122	122
# of Sections	<b>6</b>	6	5	6	5	5	5	5	5	5	5
Avg Section Size	<b>20.7</b>	21.2	25.0	21.3	24.8	24.8	24.8	24.6	24.6	24.4	24.4
First (25)	<b>126</b>	127	131	130	131	127	127	127	126	126	125
# of Sections	<b>6</b>	6	6	6	6	6	6	6	6	6	5
Avg Section Size	<b>21.0</b>	21.2	21.8	21.7	21.8	21.2	21.2	21.2	21.0	21.0	25.0
Second (25)	<b>137</b>	124	126	130	128	129	125	125	125	124	124
# of Sections	<b>7</b>	5	6	6	6	6	5	5	5	5	5
Avg Section Size	<b>19.6</b>	24.8	21.0	21.7	21.3	21.5	25.0	25.0	25.0	24.8	24.8
Third (25)	<b>160</b>	150	142	144	147	144	146	141	141	141	140
# of Sections	<b>7</b>	6	6	6	6	6	6	6	6	6	6
Avg Section Size	<b>22.9</b>	25.0	23.7	24.0	24.5	24.0	24.3	23.5	23.5	23.5	23.3
Fourth (25)	<b>127</b>	160	151	143	143	146	143	145	140	140	140
# of Sections	<b>6</b>	7	7	6	6	6	6	6	6	6	6
Avg Section Size	<b>21.2</b>	22.9	21.6	23.8	23.8	24.3	23.8	24.2	23.3	23.3	23.3
Fifth (25)	<b>150</b>	128	162	154	144	144	147	144	146	141	141
# of Sections	<b>7</b>	6	7	7	6	6	6	6	6	6	6
Avg Section Size	<b>21.4</b>	21.3	23.1	22.0	24.0	24.0	24.5	24.0	24.3	23.5	23.5
Graded SC SPED	<b>24</b>	21	18	16	20	20	20	20	20	20	20
# of Sections	<b>2</b>	2	2	2	2	2	2	2	2	2	2
Total Enrollment	<b>848</b>	837	855	845	837	834	832	825	821	814	812
Total Sections	<b>41</b>	38	39	39	37	37	36	36	36	36	35
Avg Section Size	<b>21.1</b>	22.7	22.7	22.4	23.4	23.3	23.9	23.7	23.6	23.4	24.1

Note: Projections for SC SPED students represent placeholders based on current student distribution by grade and the students-to-teacher class ratio.

Note: The boxed cells indicate the class average is approaching the maximum class size limit for the grade level.

**Projected Enrollment with New Housing - PUMS Multipliers Applied**

WILLIAM B. WARD ELEMENTARY SCHOOL  
PROJECTED ENROLLMENT

*with Impact of New Housing Projects, Anticipated Completion in 2018-2019*

GRADE	2017	2018	2019	2020	2021	2022	2023	2024	2025	2026	2027
	Actual										
KINDERGARTEN	172	173	166	172	169	169	168	168	166	167	167
FIRST	171	174	175	169	174	171	171	170	170	168	169
SECOND	168	168	172	174	167	171	168	168	167	167	166
THIRD	196	179	183	189	189	182	186	183	183	182	181
FOURTH	163	189	173	177	183	183	176	180	176	176	175
FIFTH	180	168	195	180	182	188	188	180	184	180	180
UNGRADED	7	7	7	7	6	6	6	6	6	6	6
TOTAL	1,057	1,058	1,071	1,068	1,070	1,070	1,063	1,055	1,052	1,046	1,044
% CHANGE		0.1%	1.2%	-0.3%	0.2%	0.0%	-0.7%	-0.8%	-0.3%	-0.6%	-0.2%

## Projected Enrollment with New Housing - PUMS Multipliers Applied

WILLIAM B. WARD ELEMENTARY SCHOOL  
PROJECTED ENROLLMENT - SECTIONAL ANALYSIS

*with Impact of New Housing Projects, Anticipated Completion in 2018-2019*

based on the maximum class size of 25 for K - 5

GRADE	2017	2018	2019	2020	2021	2022	2023	2024	2025	2026	2027
	Actual										
Kindergarten (25)	172	173	166	172	169	169	168	168	166	167	167
# of Sections	8	7	7	7	7	7	7	7	7	7	7
Avg Section Size	21.5	24.7	23.7	24.6	24.1	24.1	24.0	24.0	23.7	23.9	23.9
First (25)	171	174	175	169	174	171	171	170	170	168	169
# of Sections	8	7	7	7	7	7	7	7	7	7	7
Avg Section Size	21.4	24.9	25.0	24.1	24.9	24.4	24.4	24.3	24.3	24.0	24.1
Second (25)	168	161	165	167	160	164	161	161	160	160	159
# of Sections	8	7	7	7	7	7	7	7	7	7	7
Avg Section Size	21.0	23.0	23.6	23.9	22.9	23.4	23.0	23.0	22.9	22.9	22.7
Third (25)	185	179	176	182	182	175	179	176	176	175	174
# of Sections	7	8	8	8	8	7	8	8	8	7	7
Avg Section Size	26.4	22.4	22.0	22.8	22.8	25.0	22.4	22.0	22.0	25.0	24.9
Fourth (25)	157	178	173	170	176	176	169	173	169	169	168
# of Sections	7	8	7	7	8	8	7	7	7	7	7
Avg Section Size	22.4	22.3	24.7	24.3	22.0	22.0	24.1	24.7	24.1	24.1	24.0
Fifth (25)	169	162	184	180	175	181	181	173	177	173	173
# of Sections	7	7	8	8	7	8	8	7	8	7	7
Avg Section Size	24.1	23.1	23.0	22.5	25.0	22.6	22.6	24.7	22.1	24.7	24.7
Graded SC SPED	28	24	25	21	28	28	28	28	28	28	28
UNGRADED	7	7	7	7	6	6	6	6	6	6	6
# of Sections	3	3	3	3	3	3	3	3	3	3	3
Total Enrollment	1,057	1,058	1,071	1,068	1,070	1,070	1,063	1,055	1,052	1,046	1,044
Total Sections	48	47	47	47	47	47	47	46	47	45	45
Avg Section Size	22.8	23.4	23.7	23.7	23.6	23.6	23.4	23.8	23.2	24.1	24.0

Note: Projections for SC SPED students represent placeholders based on current student distribution by grade and the students-to-teacher class ratio.

Note: The boxed cells indicate the class average is approaching the maximum class size limit for the grade level.

DANIEL WEBSTER ELEMENTARY SCHOOL  
HISTORICAL ENROLLMENT

GRADE	2007	2008	FDK begins		2011	2012	2013	2014	2015	2016	2017
			2009	2010							
KINDERGARTEN	46	54	68	68	62	69	68	70	73	70	62
FIRST	60	66	72	79	67	66	65	70	74	69	65
SECOND	86	70	74	72	84	81	70	69	65	72	73
THIRD	96	94	90	96	92	97	95	92	81	83	84
FOURTH	87	84	105	113	116	116	115	118	114	99	108
FIFTH	88	92	113	111	112	121	109	119	111	116	105
UNGRADED	0	5	4	5	8	6	3	4	1	1	0
TOTAL	463	465	526	544	541	556	525	542	519	510	497
% CHANGE		0.4%	13.1%	3.4%	-0.6%	2.8%	-5.6%	3.2%	-4.2%	-1.7%	-2.5%
D. Webster ES Migration	07 - 08	08 - 09	09 - 10	10 - 11	11 - 12	12 - 13	13 - 14	14 - 15	15 - 16	16 - 17	<b>AVERAGE</b>
K - 1	143.5%	133.3%	116.2%	98.5%	106.5%	94.2%	102.9%	105.7%	94.5%	92.9%	<b>98.0%</b>
1 - 2	116.7%	112.1%	100.0%	106.3%	120.9%	106.1%	106.2%	92.9%	97.3%	105.8%	<b>101.6%</b>
2 - 3	109.3%	128.6%	129.7%	127.8%	115.5%	117.3%	131.4%	117.4%	127.7%	116.7%	<b>118.9%</b>
3 - 4	87.5%	111.7%	125.6%	120.8%	126.1%	118.6%	124.2%	123.9%	122.2%	130.1%	<b>125.4%</b>
4 - 5	105.7%	134.5%	105.7%	99.1%	104.3%	94.0%	103.5%	94.1%	101.8%	106.1%	<b>101.3%</b>

DANIEL WEBSTER ELEMENTARY SCHOOL  
PROJECTED ENROLLMENT

GRADE	2017	2018	2019	2020	2021	2022	2023	2024	2025	2026	2027
	Actual										
KINDERGARTEN	62	66	64	66	65	65	65	65	64	64	64
FIRST	65	61	65	63	65	64	64	64	64	63	63
SECOND	73	66	62	66	64	66	65	65	65	65	64
THIRD	84	85	78	75	78	76	78	77	77	77	77
FOURTH	108	105	107	98	94	98	95	98	97	97	97
FIFTH	105	109	106	108	99	95	99	96	99	98	98
TOTAL	497	492	482	476	465	464	466	465	466	464	463
% CHANGE		-1.0%	-2.0%	-1.2%	-2.3%	-0.2%	0.4%	-0.2%	0.2%	-0.4%	-0.2%

DANIEL WEBSTER ELEMENTARY SCHOOL  
PROJECTED ENROLLMENT - SECTIONAL ANALYSIS

based on the maximum class size of 25 for K - 5

GRADE	2017	2018	2019	2020	2021	2022	2023	2024	2025	2026	2027
	Actual										
Kindergarten (25)	62	66	64	66	65	65	65	65	64	64	64
# of Sections	3	3	3	3	3	3	3	3	3	3	3
Avg Section Size	20.7	22.0	21.3	22.0	21.7	21.7	21.7	21.7	21.3	21.3	21.3
First (25)	65	61	65	63	65	64	64	64	64	63	63
# of Sections	3	3	3	3	3	3	3	3	3	3	3
Avg Section Size	21.7	20.3	21.7	21.0	21.7	21.3	21.3	21.3	21.3	21.0	21.0
Second (25)	73	66	62	66	64	66	65	65	65	65	64
# of Sections	3	3	3	3	3	3	3	3	3	3	3
Avg Section Size	24.3	22.0	20.7	22.0	21.3	22.0	21.7	21.7	21.7	21.7	21.3
Third (25)	80	82	75	72	75	73	75	74	74	74	74
# of Sections	4	4	3	3	3	3	3	3	3	3	3
Avg Section Size	20.0	20.5	25.0	24.0	25.0	24.3	25.0	24.7	24.7	24.7	24.7
Fourth (25)	105	71	74	65	61	65	62	65	64	64	64
# of Sections	4	3	3	3	3	3	3	3	3	3	3
Avg Section Size	26.3	23.7	24.7	21.7	20.3	21.7	20.7	21.7	21.3	21.3	21.3
Fifth (25)	105	76	72	75	66	62	66	63	66	65	65
# of Sections	4	4	3	3	3	3	3	3	3	3	3
Avg Section Size	26.3	19.0	24.0	25.0	22.0	20.7	22.0	21.0	22.0	21.7	21.7
District Kaleidoscope		60	60	60	60	60	60	60	60	60	60
# of Sections	2	2	2	2	2	2	2	2	2	2	2
Graded SC SPED	7	10	10	9	9	9	9	9	9	9	9
# of Sections	1	1	1	1	1	1	1	1	1	1	1
Total Enrollment	497	492	482	476	465	464	466	465	466	464	463
Total Sections	24	23	21	21	21	21	21	21	21	21	21
Avg Section Size	23.2	21.3	22.9	22.6	22.0	21.9	22.1	22.0	22.1	21.9	21.9

Note: As per the district, Kaleidoscope is a district gifted program for grades 4 and 5 with a cap of 30 students each class.

Note: Current year (2017) Kaleidoscope students are in the grade level counts (grades 4 and 5).

Note: Projections of Kaleidoscope classes represent a space holder of 60 seats for grades 4 and 5.

Note: Projections for SC SPED students represent placeholders based on current student distribution by grade and the students-to-teacher class ratio.

Note: The boxed cells indicate the class average is approaching the maximum class size limit for the grade level.

## Projected Enrollment with New Housing - PUMS Multipliers Applied

CITY SCHOOL DISTRICT OF NEW ROCHELLE  
DISTRICT ELEMENTARY SECTIONS - SUMMARY

*with Impact of 14 New Housing Projects, Anticipated Completion in 2018-2019*  
based on the maximum class size of 25 for K - 5

GRADE	2017	2018	2019	2020	2021	2022	2023	2024	2025	2026	2027
	Actual										
Kindergarten (25)	<b>760</b>	772	753	770	756	756	755	752	748	747	744
# of Sections	<b>37</b>	34	32	34	32	32	32	32	32	32	32
Avg Section Size	<b>20.5</b>	22.5	23.4	22.4	23.5	23.5	23.5	23.4	23.3	23.2	23.2
First (25)	<b>748</b>	768	784	764	778	764	764	763	760	756	755
# of Sections	<b>38</b>	34	35	34	35	34	34	34	33	33	32
Avg Section Size	<b>19.9</b>	22.4	22.1	22.4	22.0	22.5	22.5	22.5	23.0	22.9	23.4
Second (25)	<b>806</b>	718	741	756	733	747	733	733	732	729	726
# of Sections	<b>38</b>	31	33	34	33	33	32	32	32	32	32
Avg Section Size	<b>21.5</b>	23.2	22.4	22.2	22.1	22.5	22.7	22.7	22.7	22.6	22.5
Third (25)	<b>823</b>	795	717	743	751	728	742	728	728	727	724
# of Sections	<b>36</b>	35	31	33	32	31	32	32	32	31	31
Avg Section Size	<b>22.5</b>	22.7	23.4	22.5	23.6	23.4	23.3	22.9	22.9	23.4	23.3
Fourth (25)	<b>707</b>	792	768	689	712	720	697	711	697	697	696
# of Sections	<b>34</b>	34	33	29	32	32	31	31	31	31	31
Avg Section Size	<b>21.0</b>	23.4	23.4	23.6	22.0	22.4	22.2	22.7	22.3	22.3	22.2
Fifth (25)	<b>747</b>	678	797	772	690	713	721	698	712	698	698
# of Sections	<b>34</b>	31	34	34	29	32	32	31	32	31	31
Avg Section Size	<b>22.1</b>	21.7	23.5	23.0	23.6	22.0	22.4	22.2	22.2	22.3	22.3
District Kaleidoscope at Webster		60	60	60	60	60	60	60	60	60	60
# of Sections	<b>2</b>	2	2	2	2	2	2	2	2	2	2
Graded SC SPED	<b>157</b>	149	145	139	147	150	153	153	153	153	153
UNGRADED	<b>20</b>	20	20	20	19	19	19	19	19	19	19
# of Sections	<b>18</b>	18	18	18	18	18	18	18	18	18	18
Total K - 5 Enrollment	<b>4,768</b>	4,752	4,785	4,713	4,646	4,657	4,644	4,617	4,609	4,586	4,575
Total K - 5 Sections	<b>237</b>	219	218	218	213	214	213	212	212	210	209
Avg Section Size	<b>21.2</b>	22.6	23.1	22.7	22.8	22.7	22.8	22.7	22.7	22.8	22.8

Note: As per the district, Kaleidoscope is a district gifted program for grades 4 and 5 with a cap of 30 students each class.

Note: Current year (2017) Kaleidoscope students are in the grade level counts (grades 4 and 5).

Note: Projections of Kaleidoscope classes represent a space holder of 60 seats for grades 4 and 5.

Note: Projections for SC SPED students represent placeholders based on current student distribution by grade and the students-to-teacher class ratio.



**Projected Enrollment with New Housing - PUMS Multipliers Applied**

ALBERT LEONARD MIDDLE SCHOOL  
PROJECTED ENROLLMENT

*with Impact of New Housing Projects, Anticipated Completion in 2018-2019*  
Feeder Schools: Davis ES, Ward ES and Webster ES

GRADE	2017	2018	2019	2020	2021	2022	2023	2024	2025	2026	2027
	Actual										
SIXTH	402	428	399	433	412	384	409	407	394	403	398
SEVENTH	428	404	430	402	435	415	386	411	409	396	405
EIGHTH	399	429	405	431	403	436	416	387	412	410	397
UNGRADED	7	8	8	8	8	8	8	8	8	8	8
TOTAL	1,236	1,269	1,242	1,274	1,258	1,243	1,219	1,213	1,223	1,217	1,208
% CHANGE		2.7%	-2.1%	2.6%	-1.3%	-1.2%	-1.9%	-0.5%	0.8%	-0.5%	-0.7%

**Projected Enrollment with New Housing - PUMS Multipliers Applied**

ISAAC E. YOUNG MIDDLE SCHOOL  
PROJECTED ENROLLMENT

*with Impact of New Housing Projects, Anticipated Completion in 2018-2019*  
Feeder Schools: Columbus ES, Jefferson ES and Trinity ES

GRADE	2017	2018	2019	2020	2021	2022	2023	2024	2025	2026	2027
	Actual										
SIXTH	383	346	331	411	395	348	345	358	349	353	345
SEVENTH	407	389	354	337	418	401	354	351	364	355	359
EIGHTH	384	406	390	354	336	417	400	353	350	363	354
UNGRADED	16	18	18	18	17	17	17	17	17	17	17
TOTAL	1,190	1,159	1,093	1,120	1,166	1,183	1,116	1,079	1,080	1,088	1,075
% CHANGE		-2.6%	-5.7%	2.5%	4.1%	1.5%	-5.7%	-3.3%	0.1%	0.7%	-1.2%

## Projected Enrollment with New Housing - PUMS Multipliers Applied

NEW ROCHELLE HIGH SCHOOL  
PROJECTED ENROLLMENT

*with Impact of New Housing Projects, Anticipated Completion in 2018-2019*

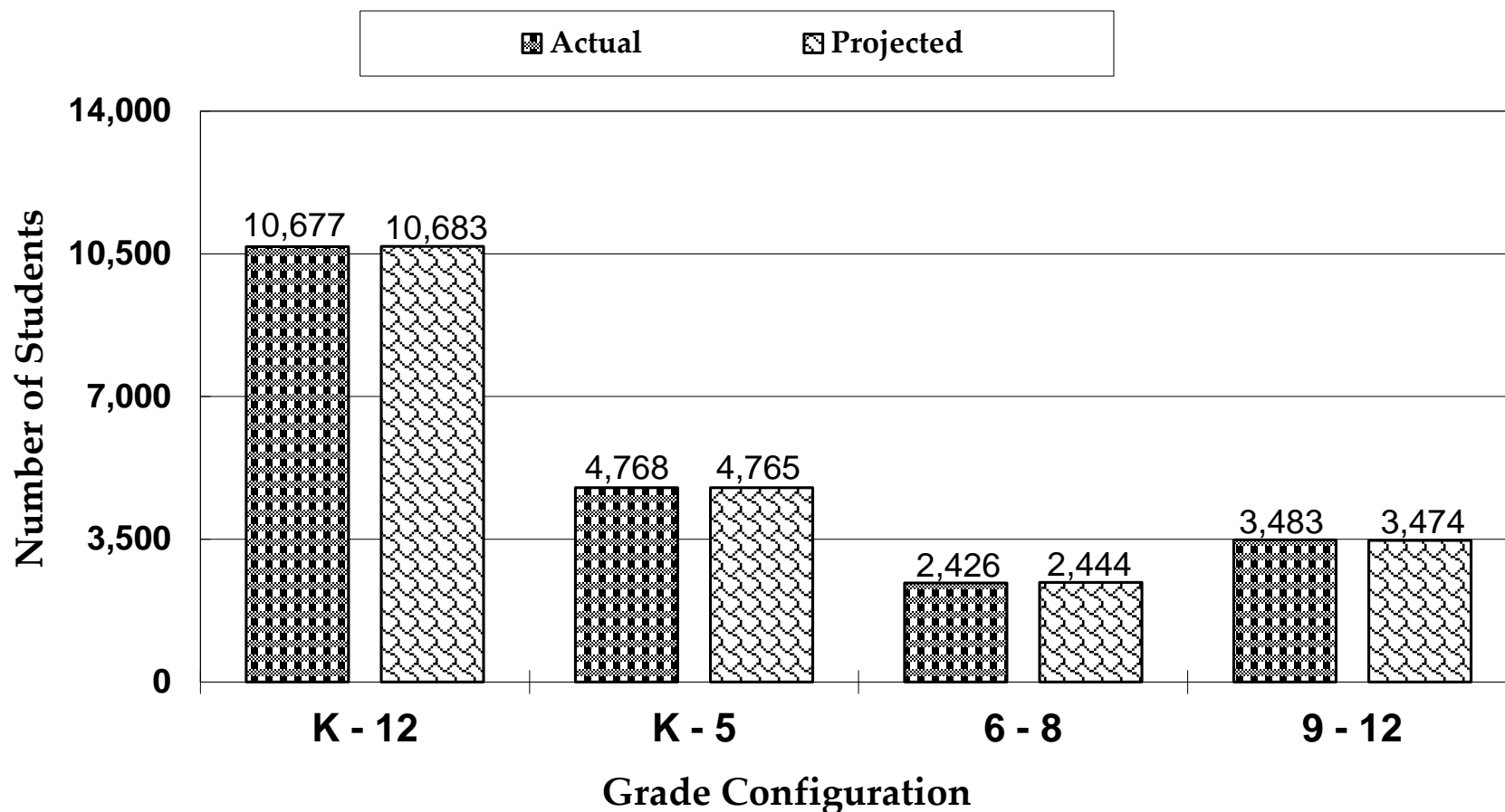
GRADE	2017	2018	2019	2020	2021	2022	2023	2024	2025	2026	2027
	Actual										
NINTH	1,040	1,011	1,080	1,028	1,014	954	1,102	1,054	956	984	998
TENTH	895	883	860	918	872	861	810	935	895	811	835
ELEVENTH	705	759	751	731	779	740	730	687	793	759	688
TWELFTH	796	807	869	860	836	891	847	835	786	907	868
UNGRADED	47	48	48	48	49	49	48	48	47	47	47
TOTAL	3,483	3,508	3,608	3,585	3,550	3,495	3,537	3,559	3,477	3,508	3,436
% CHANGE		0.7%	2.9%	-0.6%	-1.0%	-1.5%	1.2%	0.6%	-2.3%	0.9%	-2.1%

# Appendix C

# City School District of New Rochelle

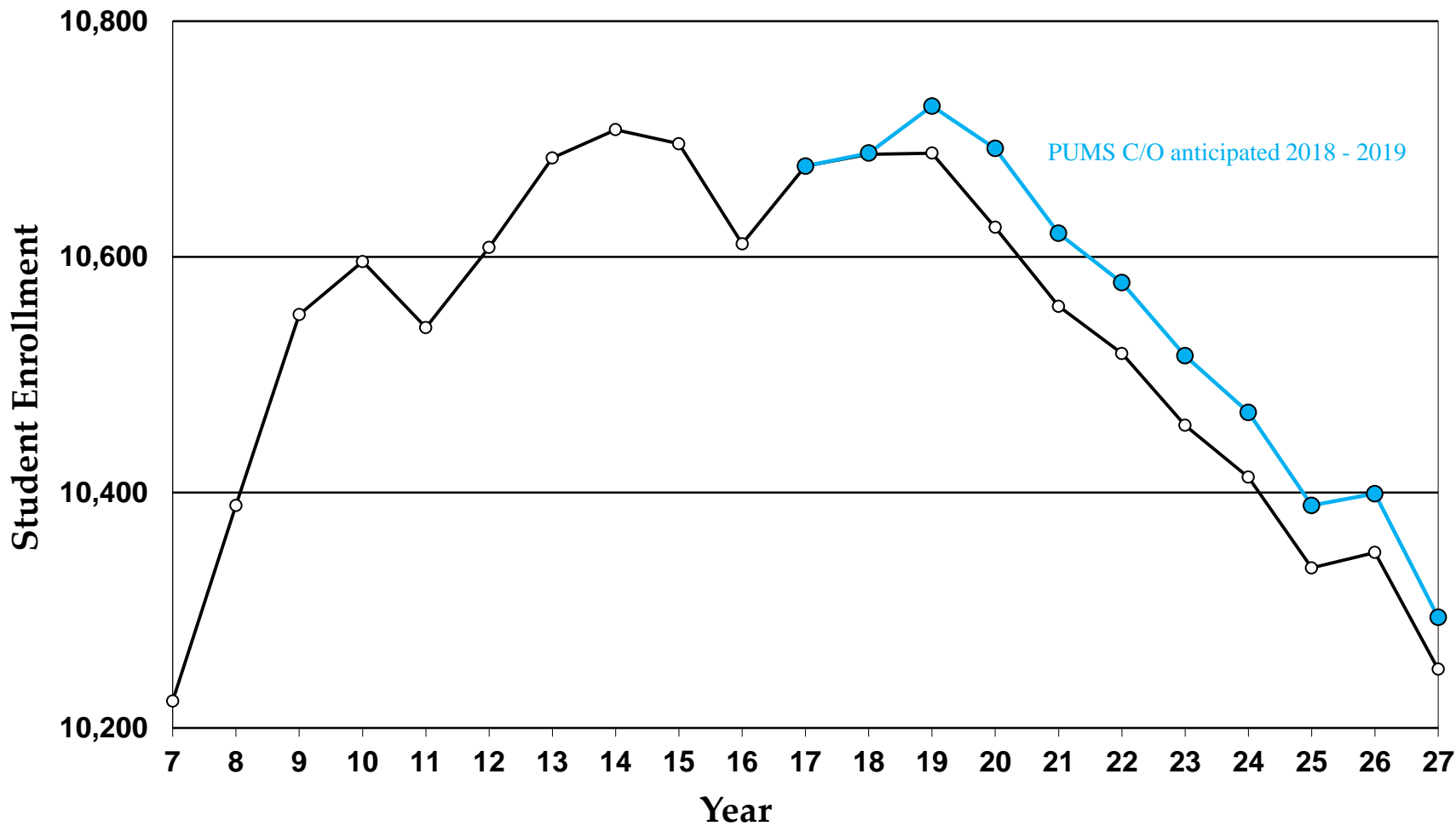
## Accuracy of 2016-17 Western Suffolk BOCES Projections for 2017-18

### 2017-18 Enrollment



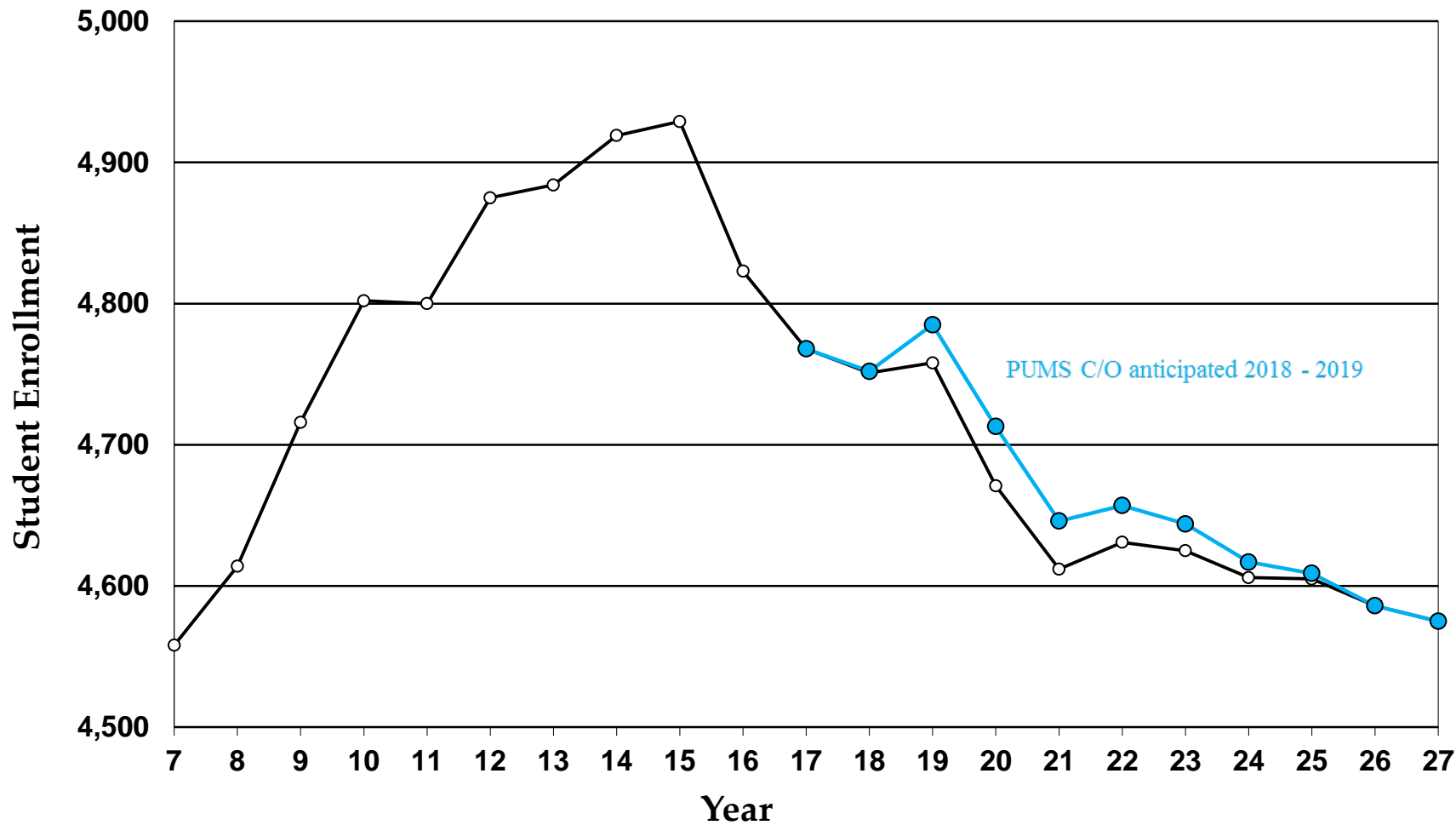
# City School District of New Rochelle

## Enrollment: Grades K - 12



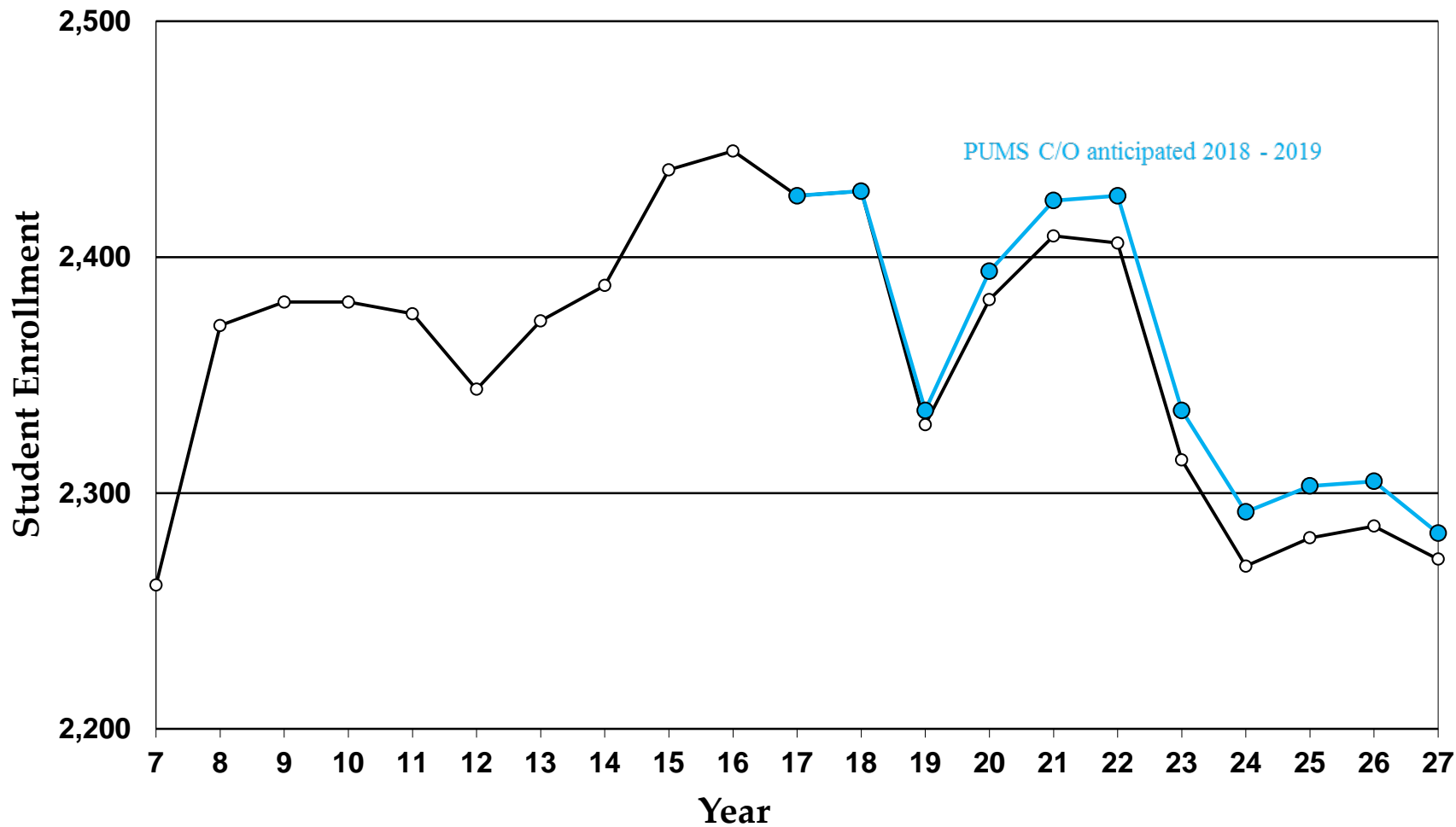
# City School District of New Rochelle

## Enrollment: Grades K - 5



# City School District of New Rochelle

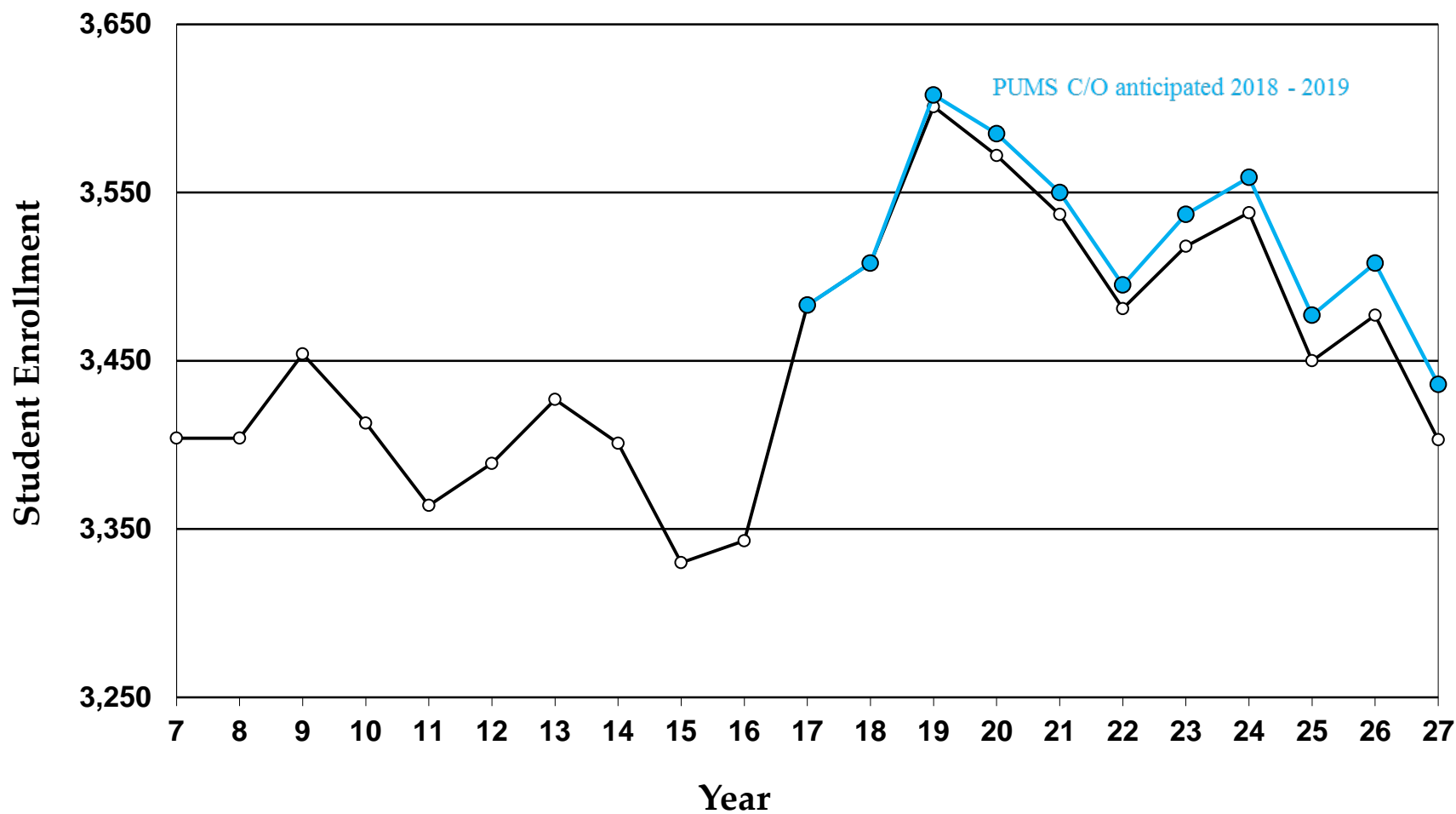
## Enrollment: Grades 6 - 8





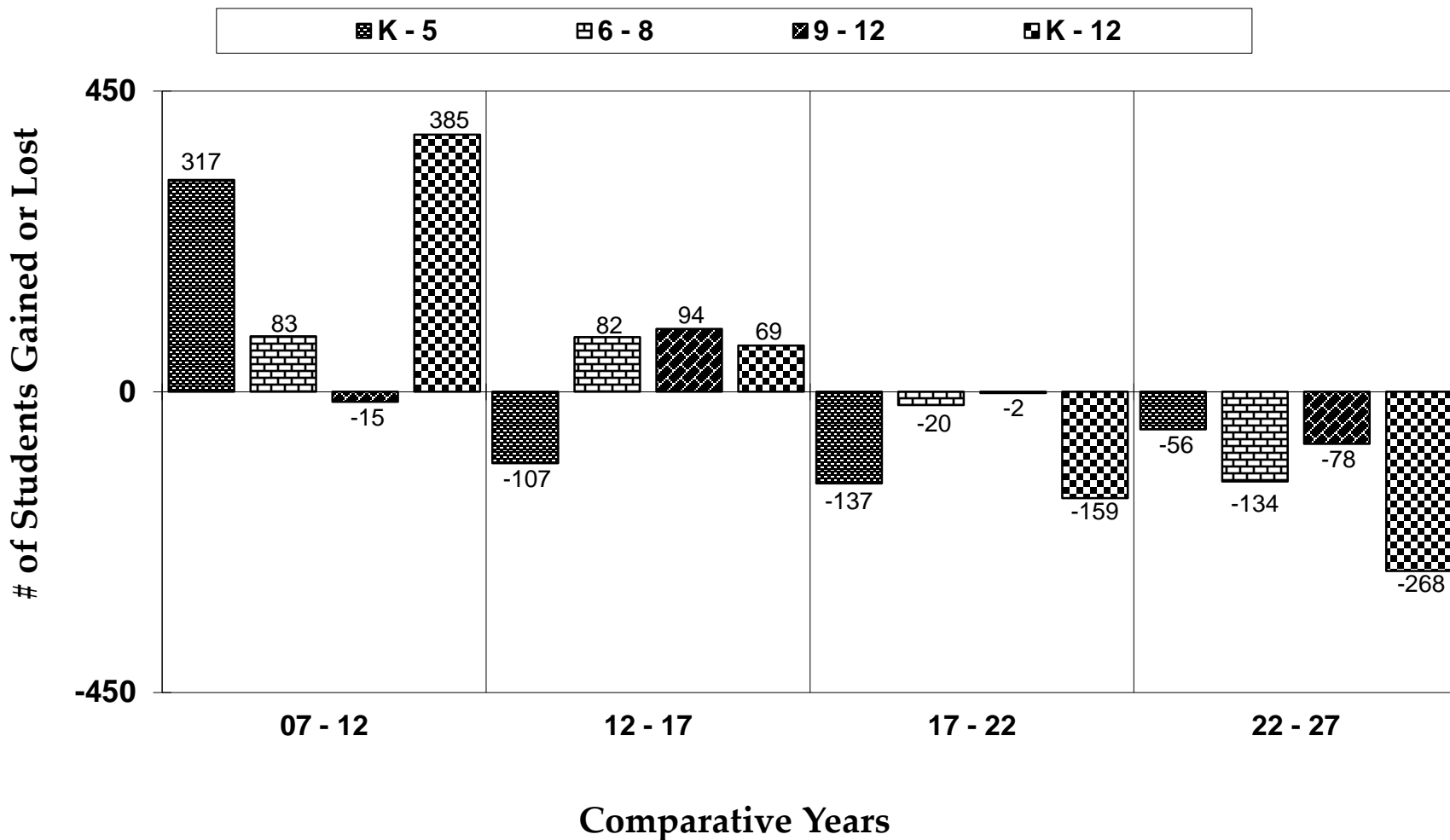
# City School District of New Rochelle

## Enrollment: Grades 9 - 12



# City School District of New Rochelle

## Enrollment Change 2007 - 2027



Mr. Salvatore Marinello, President  
Ms. Jeanette Santos, Vice President  
Ms. Mildred Browne  
Mr. Sydney Finkelstein  
Ms. Ilene Herz, Esq  
Mr. Peter Wunsch  
Ms. Maryann Zumpano  
Ms. Joanne Klein, District Clerk

Mr. Michael Flynn  
Chief Operating Officer  
Ms. Angelique Johnson-Dingle  
District Superintendent





**Division of Instructional Support Services**

Office of School Planning & Research  
31 Lee Avenue  
Wheatley Heights, NY 11798  
631-595-6802