




LONG RANGE PLANNING STUDY

NEW ROCHELLE

CITY SCHOOL DISTRICT

2020 – 21

UPDATE



*A Service of Western Suffolk BOCES
Division of Instructional Support Services
Office of School Planning & Research*

City School District of New Rochelle

Long Range Planning Study Update Demographic and Enrollment Analysis 2020-21

BOARD OF EDUCATION

PresidentRachel Relkin
Vice President..... William Iannuzzi
Trustees Adina Berrios-Brooks
..... Katie Castellano-Minaya
..... Todd Kern
..... Amy Moselhi
..... Julia Muggia Ochs
..... Valarie D. Williams

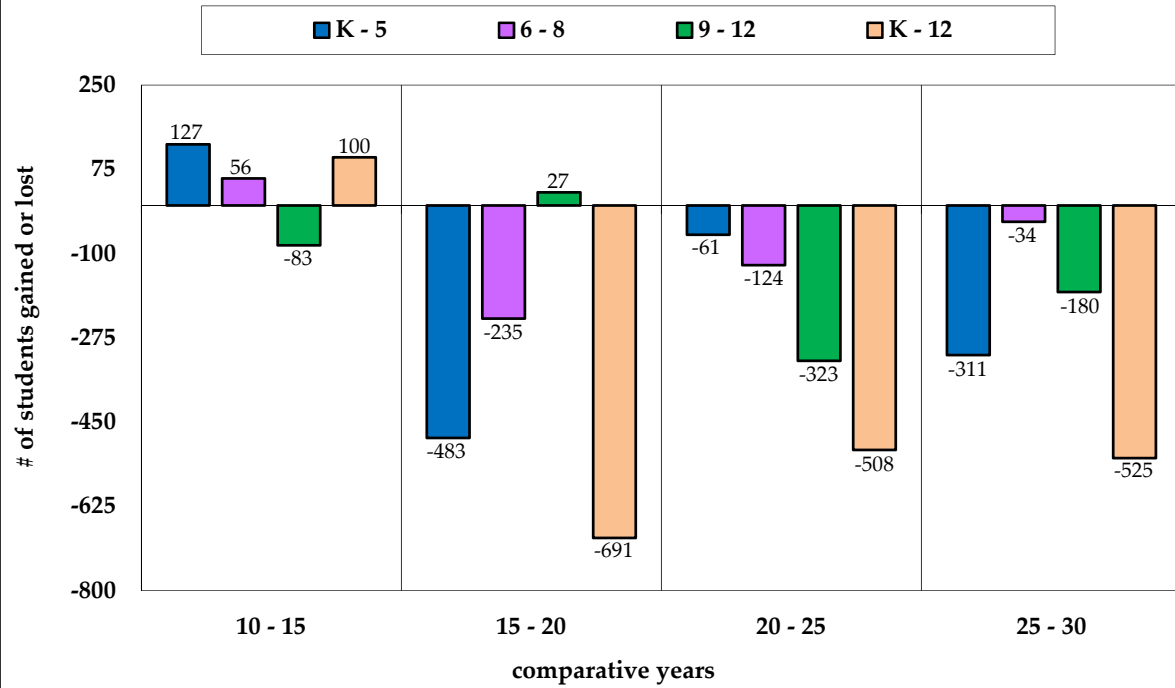
DISTRICT ADMINISTRATION

Interim Superintendent of Schools Dr. Alex Marrero
Assistant Superintendent for BusinessGregory W. Kern
Assistant Superintendent for Student Support Services Dr. Jackielyn Manning Campbell
Assistant Superintendent for Human Resources Ryan N. Reed

BUILDING ADMINISTRATION

New Rochelle High School..... Steve Goldberg, Principal
Campus Alternative High School..... Andrea Schwach, Director
Albert Leonard Middle School..... John Barnes, Principal
Isaac E. Young Middle School..... Dr. Tawanda Gerald Robinson, Interim Principal
Henry Barnard Early Childhood Center Dr. Nicolas Cracco, Principal
Columbus Elementary School Michael Galland, Principal
George M. Davis Elementary School Anthony Bambrola, Principal
Jefferson Elementary School..... Kimmerly Nieves, Principal
Trinity Elementary School..... Michael Hilderbrand, Principal
William B. Ward Elementary School..... Franco J. Miele, Principal
Daniel Webster Magnet School..... Melissa A. Passarelli, Principal

City School District of New Rochelle Enrollment Change 2010 - 2030



The City School District of New Rochelle has shown an overall loss of 591 students, or 5.6 percent between 2010 and 2020. During the ten-year historical period, the elementary (K - 5), middle (6 - 8) grades and high school (9 - 12) grades lost students. During the projection period, all grade configurations are expected to lose students. The projected 2030 enrollment of 8,972 students represents an overall loss of 1,033 students, or 10.3 percent, when compared to the current enrollment.

INTRODUCTION

At the request of the City School District of New Rochelle, the *Western Suffolk BOCES Office of School Planning and Research* conducted this study to assess recent demographic factors and enrollment trends in order to prepare projections through the year 2030.

The City School District of New Rochelle is committed to meeting the educational needs of its students. The continued monitoring of enrollment trends will give the district the data on which to consider a variety of educational issues. The foundation for this study is in keeping with the promotion of the basic district mission and philosophy.

The Board of Education and the Superintendent's efforts to plan for the future through sound management practices is fostered by comprehensive, objective data, such as contained within this *Long Range Planning Study Update*. This study serves to provide objective data that the Board of Education and administration can use in planning for the future. Planning is, however, a dynamic process that needs to reflect change. Periodic updates allow the incorporation of subtle changes in district trends. This study provides an update to the demographic and enrollment study prepared for the district during the 2019-20 school year.

Barbara Graziano, School Planning Manager, oversaw all aspects of the study and served as principal researcher. Shu-ling Liu, Research Analyst, served as analyst and forecaster. Irene Bradley, Program Specialist, prepared the report. Denise Facilla, Educational Planning Assistant, provided research assistance and prepared the report for printing.

Dr. Alex Marrero, Interim Superintendent of Schools, provided access to district records. Gregory Kern, Assistant Superintendent for Business & Administration, provided direction on the study scope, compiled the necessary data and acted as district liaison, thus enabling the study to accomplish its objectives.

Additionally, selected references and resources were used, as indicated below:

Center for Immigration Studies
Center for Public Education
City of New Rochelle Department of Planning
Freddie Mac
Migration Policy Institute
National Alliance for Public Charter Schools
National Association of Realtors
National Catholic Educational Association
National Center for Education Statistics
National Center for Health Statistics
National Vital Statistics System
New York Charter Schools Association
New York State Association of Realtors
New York State Department of Health
New York State Education Department
New York State Office of Real Property Services
New York State Office of Religious and Independent Schools
One Key MLS
Pew Research Center
United States Customs and Border Protection
United States Census Bureau
United States Department of Education
U.S. News & World Report
U.S. Department of Housing and Urban Development
Wall Street Journal

TABLE OF CONTENTS

ENROLLMENT: PAST, PRESENT & FUTURE

A. Births	1
B. Population	4
C. Housing.....	9
D. Non-Public School Enrollment	14
E. Enrollment Projection Methodology.....	15
F. Accuracy of Previous Projections	17
G. District Enrollment	18
H. Enrollment of Grade Configurations	21

APPENDICES

Appendix A - Historical and Projected Enrollment Worksheets

Appendix B - Projected Enrollment Worksheets with Student Yields from New Housing

Appendix C - Enrollment Graphs

TABLES

Table 1 - Births in the City School District of New Rochelle 2005 - 2017	3
Table 2 - Foreign-Born Population in the United States from 1970 to 2060	6
Table 3 - Number of Home Sales and Median Prices in Westchester County	9
Table 4 - Home Sales in the City School District of New Rochelle 2008 - 2019	10
Table 5 - Approved and Proposed Housing in the City School District of New Rochelle	11
Table 6 - Accuracy of the Western Suffolk BOCES 2019-20 Projections for 2020-21.....	17
Table 7 - Projected City School District of New Rochelle Enrollment.....	18
Table 8 - City SD of New Rochelle Projected Enrollment w/New Housing.....	19
Table 9 - Projected City School District of New Rochelle Elementary Enrollment.....	21
Table 10 - City SD of New Rochelle Projected Middle School Enrollment.....	26

FIGURES

Figure 1 - New York State Births, 1999 - 2019	2
Figure 2 - Westchester County Births, 1999 - 2019	2
Figure 3 - Projected Age Structure of the U.S. Population.....	5
Figure 4 - U.S. Children in Immigrant Families	6
Figure 5 - Historical & Projected Ethnic Structure of the U.S. Population.....	7
Figure 6 - Percentage of Young Adults Living with Parents 1960 - 2020	13
Figure 7 - Charter School Enrollment	14

ENROLLMENT: PAST, PRESENT & FUTURE

Changes in school enrollment occur due to fluctuations in the number of children being born, the number of families moving into a community and/or the number of children attending non-public or charter schools. The City School District of New Rochelle is expected to experience a decrease in enrollment during the projection period 2021- 2030. This anticipated enrollment decline is accounted for by declining births and changing resident characteristics.

A. BIRTHS

Data from the *National Center for Health Statistics* indicates that there were 3,745,540 births recorded in 2019. This is the lowest number of recorded births since 1985 and reflects a decrease of approximately one percent per year since 2015. The general fertility rate also decreased in 2019 to 58.3 births per one thousand women between the ages of 15 and 44, representing the lowest fertility rate on record. The fertility rate peaked at 122.7 births in 1957 (during the Baby Boom years). The fertility rate in New York State was 57.9 births in 2018.

A lower number of recorded births has been linked to several factors, including lower starting salaries, significant student loan debt and higher rental costs. Over the past decade, these factors have resulted in a growing number of young people continuing to live with their parents, thereby delaying marriage and childbearing. Another factor contributing to the birth decline is a significant drop in teenage births; last year's teen (15 - 19) birth rate of 16.6 represents a decline of 73 percent when compared to the teen peak birth rate of 61.8 in 1991.

A recent study from the *Brookings Institution* projects that births will further decline as a result of the pandemic and economic recession. The *Brookings* analysis estimates that there could be a drop of 300,000 - 500,000 births in 2021, as women choose to either postpone or forego a pregnancy. This projection is based on an analysis of birth patterns during historical events, such as the *Spanish Flu* in 1918 and the *Great Recession* from 2007 to 2009.

Shifts in fertility patterns among minority groups have also affected birth rates. Between 2000 and 2018 (latest available data), fertility rates have fallen for all racial/ethnic groups, with the most significant decline reported in the Hispanic segment, falling from a peak of 98.3 births in 2006 to 65.9 births in 2018. Birth rates for NHOPI (Native Hawaiian or other Pacific Islander) women were the highest with 73 births per 1,000 women, followed by Hispanic women (66 births), Blacks (62 births), AIAN (American Indian/Alaska Native) women (58 births), Asian women (56 births) and Whites (56 births).

Data from the *National Center for Health Statistics* indicates that in 2019, birth rates for all age groups under the age of 35 were lower than the previous year, with a notable five percent decrease recorded in the 15 - 19 age group. During the same period, birth rates grew for women in their early forties and remained stable for women in the 35 - 39 age group.

Birth rates were highest for women aged 30 - 34 (98.3 per 1,000 women), followed by women aged 25 - 29 (93.7) and women aged 20 - 24 (66.6); however, the birth rates in each of these age groups are reportedly lower than the previous year. Prior to 2016, women aged 25 - 29 had the highest birth rate.

Mirroring the national trend, the number of births in New York State decreased in 2019 when compared to the previous year. Provisional numbers issued by the *National Center for Health Statistics* indicate that there were 221,532 births recorded in 2019, reflecting a decrease of 2.1 percent when compared to 2018. However, this represents a decrease of 13.2 percent when compared to births in 1999 (255,147 births).

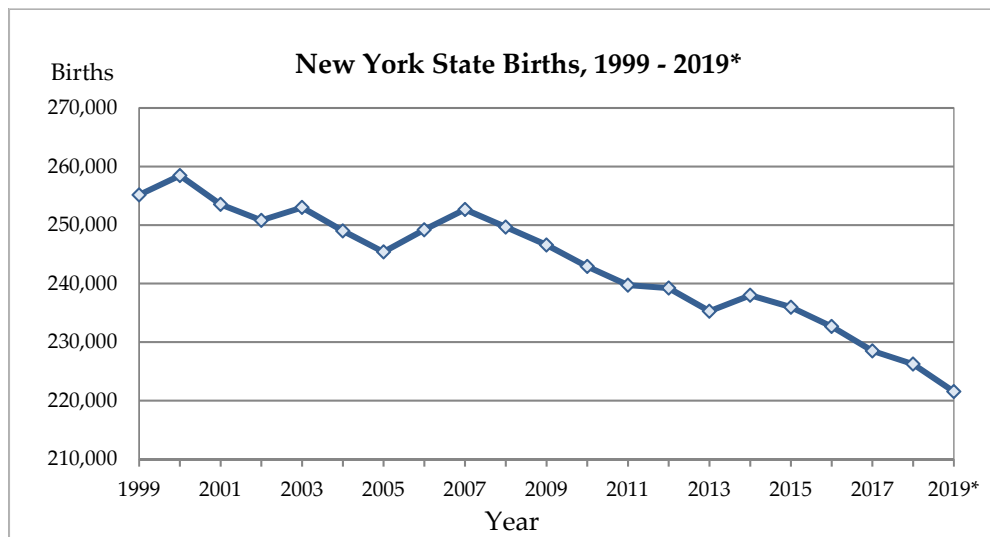


Figure 1 - New York State Births, 1999 - 2019*
* 2019 data are provisional

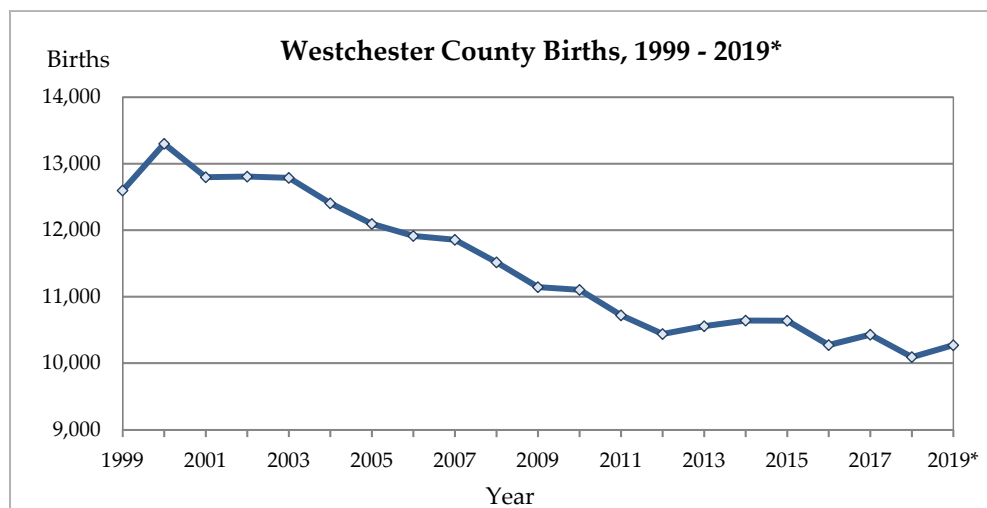


Figure 2 - Westchester County Births, 1999 - 2019*
*2018 & 2019 County birth data is preliminary

Figure 2 shows births in Westchester County reached a peak of 13,300 in 2000; however, since then births have declined to 10,271 in 2019, reflecting a decrease of 23 percent between 2000 (peak) and 2019 (2018 and 2019 county birth data is preliminary).

As shown in Table 1, within the City School District of New Rochelle, the number of births ranged within 909 - 991 between 2005 and 2010, with more than 950 births recorded in four of those years; however, recorded births have been below 900 in four of the seven years between 2011 and 2017 (district birth data for 2018 and 2019 is not yet available).

**Table 1 - Births in the City School District of New Rochelle
2005 - 2017**

Year	City SD of New Rochelle
2005	991
2006	929
2007	909
2008	963
2009	974
2010	987
2011	898
2012	895
2013	914
2014	871
2015	913
2016	897
2017	910

Source: NYS Dept. of Health

Note: The NYS DOH has not yet issued school district birth data for 2018 & 2019

B. POPULATION

According to the *Census Bureau*, there were an estimated 328.2 million people living in the United States as of July 2019, representing an increase of 19.5 million people, or 6.3 percent, since the 2010 *Census*. However, this reflects a year-to-year population increase of merely 0.5 percent, marking the slowest growth since the *Great Depression*. The growth rate has been impacted by lower fertility rates, lower immigration rates since the *Great Recession*, and a rise in mortalities amongst baby boomers. *Census Bureau* projections indicate that the United States population is expected to continue to grow more slowly, with an increase of 76.6 million people forecasted between 2018 and 2060. Despite the slower growth rate, beginning in 2058, the population is expected to exceed 400 million people.

New York State's population exceeded 19.4 million people as of July 2019, reflecting a gain of approximately 75,000 people, or 0.4 percent, since the 2010 *Census*. However, in 2019, New York recorded a year-to-year loss of almost 77,000 people (-0.4 percent). In 2019, New York lost more than 180,000 residents through domestic migration, meaning more residents moved to other states than moved in; this loss was somewhat offset by international migration (gain of 45,753 residents between 2018 and 2019) and natural increase (gain of 58,107 residents). However, it should be noted that gains through natural increase have declined each year since 2010. New York is the fourth most populous state in the country, following California (39.5 million people), Texas (29.0 million people) and Florida (21.5 million people). Prior to 2014, New York had been the third most populous state.

Westchester County's population totaled almost 970,000 people as of July 2019, reflecting a gain of 18,393 people, or 1.9 percent, between 2010 and 2019. As seen in New York State, Westchester County has experienced losses due to domestic migration; however, those losses have been offset by gains through international migration and natural increase. Westchester County ranks seventh in population among New York's 62 counties.

Between 2010 and 2019, the City School District of New Rochelle recorded a gain of 1,495 residents, or 1.9 percent, with an estimated 78,557 residents living within the district in 2019.

Census Bureau projections indicate that the year 2030 will signify a “demographic turning point for the United States,” as all baby boomers will be age 65 or over by that time, and one in five Americans will be of retirement age. It is projected that by 2034, older adults will outnumber children under age 18 for the first time in U.S. history.

As shown in Figure 3, the 65 and over age segment of the population in the United States consisted of approximately 12 percent of the total population in 2000; it is anticipated that this age segment will continue to grow over the next few decades and will comprise approximately 23 percent of the total population in 2060. Conversely, the percentage of residents under 18 years of age is projected to decrease from nearly 26 percent of the population in 2000 to less than 20 percent in 2060. The 18 - 44 age segment is also expected to decline, from 40 percent in 2000 to 33 percent in 2060, whereas the 45 - 64 age segment is projected to fluctuate but overall decline from approximately 26 to 24 percent during this period.

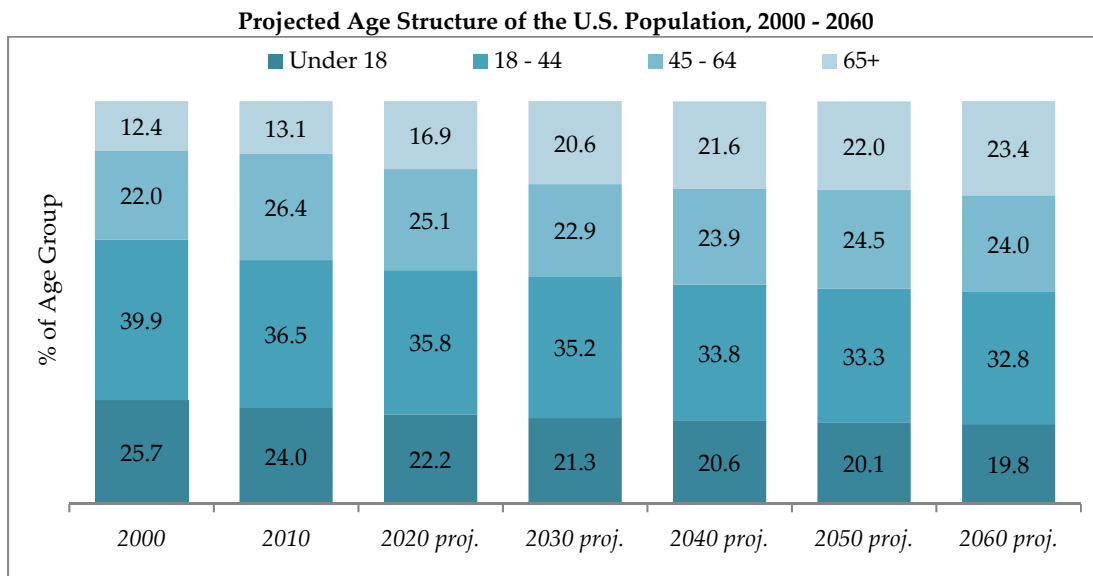


Figure 3 - Projected Age Structure of the U.S. Population
Source: Census Bureau

In New York State, between 2010 and 2019, the 19 and under segment decreased from 25.3 to 23.2 percent of the population; however, during the same period, the segment of residents aged 65-and older grew from 13.5 to 16.9 percent.

In Westchester County, population trends reflect those of New York State and the nation. Between 2010 and 2019, the 19 and under age segment decreased from 26.5 to 24.3 percent of the population; however, during the same period the 65-and older segment grew from 14.0 to 17.4 percent. The age structure of the resident population in the City School District of New Rochelle has remained relatively stable during this period. In 2019, approximately 24 percent of residents were aged 19 or younger; the young adult (20 - 39) segment comprised approximately 26 percent; the 40 - 64 age group comprised 32 percent and 18 percent of residents were aged 65 or older in 2019. The median age in Westchester County has increased from 40.0 years in 2010 to 41.3 years in 2019; this is greater than the United States median age of 38.4 years and the New York State median age of 39.2 years. The median age in the City School District of New Rochelle was 39.7 years in 2019.

The *Pew Research Center* reported that the United States has a larger immigrant population than any other country. As shown in Table 2, the foreign-born population in the United States has more than quadrupled between 1970 and 2019, growing from approximately 9.6 million people to 44.0 million people. The immigrant segment of the total United States population grew from 4.7 percent to 13.6 percent, during this period. *Census Bureau* projections indicate that the foreign-born population will further increase to 69.3 million people by 2060 and account for 17.1 percent of the United States population.

Table 2 - Foreign-Born Population in the United States from 1970 to 2060

Year	1970	1980	1990	2000	2010	2019	2020	2030	2040	2050	2060
Number of Immigrants (Millions)	9.6	14.1	19.8	31.1	38.7	44.0	46.7	53.8	60.2	65.3	69.3
Immigrant Share of Total U.S Population	4.7%	6.2%	7.9%	11.1%	12.7%	13.6%	14.0%	15.1%	16.1%	16.8%	17.1%

Sources: *Census Bureau & Center for Immigration Studies*

As of 2019, the majority of the foreign-born population in the United States has immigrated from Latin America (nearly 51 percent), followed by Asia (31 percent) and Europe (11 percent). This is a significant shift since 1960, when 75 percent of immigrants were from Europe, nine percent were from Latin America and five percent were from Asia. However, in most years since 2010, there have been more immigrants arriving from Asia than from Latin American countries. Since the *Great Recession*, immigration from Latin America has slowed considerably, especially from Mexico. By 2055, Asians are projected to become the largest immigrant group in the United States. Estimates from the *Pew Research Center* show that by 2065, Asians are expected to comprise 38 percent of all immigrants in this country.

According to the *Migration Policy Institute*, in 2019, approximately 18 million children in the United States under the age of 18 lived with at least one foreign-born parent. This accounts for one in four children of this age having at least one immigrant parent. More than half of those children live in four states, which include California, Texas, New York and Florida.

U. S. Children Living with Native vs. Immigrant Parents

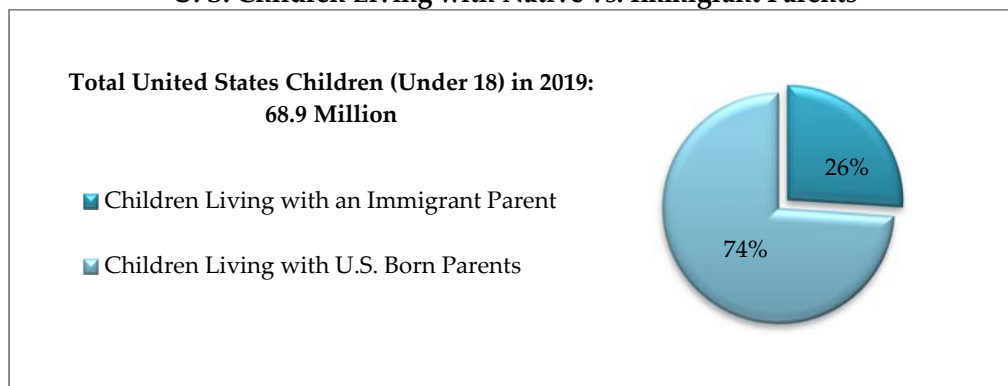


Figure 4 - U.S. Children in Immigrant Families
Source: *Migration Policy Institute*

The foreign-born population in New York State increased by 5.7 percent between 2010 and 2019, growing from approximately 4.2 million people in 2010 to more than 4.4 million people in 2019; this represents nearly 23 percent of New York State’s population. The foreign-born population in New York is comprised of approximately 49 percent of people from Latin America, 29 percent from Asia and 16 percent from Europe. In Westchester County, the foreign-born population increased 8.4 percent between 2010 and 2019, and represents almost 26 percent of the population. According to *Census Bureau* estimates, the foreign-born population in the City School District of New Rochelle increased between 2010 and 2019, growing from 27.2 to 31.0 percent of the resident population.

Recent trends in immigration have contributed to changes in the ethnic structure of the population in the United States. These trends, coupled with a projected loss of the White population due to mortalities as the baby boom cohort reaches the oldest ages, will result in an increasingly diverse population in the years to come.

As shown in Figure 5, in 2010, approximately 64 percent of the population was White, down from nearly 70 percent in 2000. The White segment is expected to continue to decline through 2060, while growth is forecasted in each of the minority groups. By 2060, the combined minority population will account for approximately 56 percent of the total population, up from 30 percent in 2000. According to the 2010 Census, Hispanics were the largest minority group, comprising approximately 16 percent of the population, followed by Blacks (12.2 percent), Asian/others (5.8 percent) and those identifying themselves as two or more races (1.9 percent). The Hispanic segment is expected to continue to be the largest minority group, comprising nearly 29 percent of the total population by 2060. The population of people identified as two or more races is projected to be the fastest growing racial or ethnic group over the next several decades.

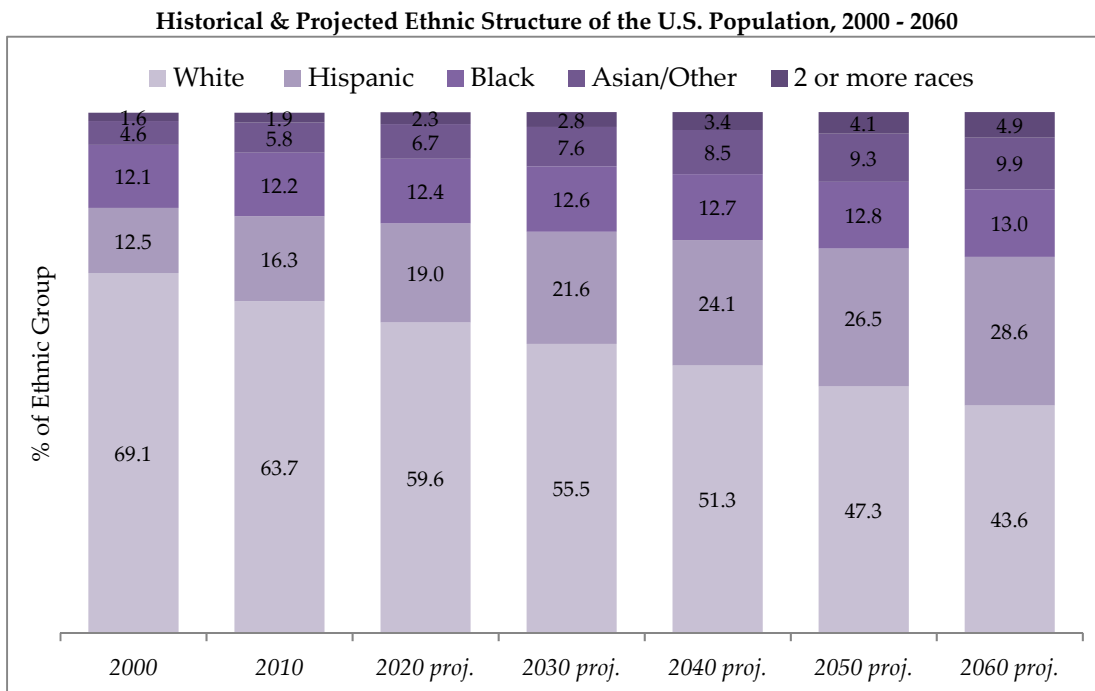


Figure 5 - Historical & Projected Ethnic Structure of the U.S. Population
Source U.S. Census Bureau

The ethnic composition within New York State has shifted between 2010 and 2019. The White segment comprised approximately 55 percent of the population in 2019, down from 58.5 percent in 2010, while the minority segments comprise approximately 45 percent of the state residents. Hispanics are the largest minority group at more than 19 percent, followed by Blacks (14.5 percent), Asian/others (9.1 percent) and those identifying themselves as two or more races (1.8 percent). There are five states that are “majority-minority,” which include California, Hawaii, New Mexico, Texas and Nevada.

The ethnic composition within Westchester County has also shifted between 2010 and 2019. The White segment of the population comprised 52.6 percent in 2019, down from almost 58 percent in 2010, while the Hispanic and Asian/others segments grew from 21.8 to 25.5 percent and from 5.7 to 6.4 percent, respectively. The Black segment represents almost 14 percent of the population; 1.6 percent of residents identified themselves as two or more races in 2019.

The ethnic composition of the resident population within the City School District of New Rochelle has shifted. Between 2010 and 2019, the White segment of the population decreased from 47.9 to 43.6 percent, while the Hispanic, Black and Asian/others segments of the population increased from 27.8 to 30.2 percent, from 18.1 to 18.7 percent, and from 4.6 to 6.4 percent, respectively; 1.1 percent of residents identified themselves as two or more races in 2019.

C. HOUSING

As the COVID-19 pandemic forced the shutdown of the economy in March 2020, housing activity in New York State, for the most part, came to a halt, resulting in declines of over 65 percent in new listings and pending sales during the month of April. However, the market has rebounded in recent months, spurred by record low mortgage rates, and (in lower New York State) New York City residents seeking homes with open space for their children and schools that may have a greater chance of staying open with in-person learning. Recent data from the *New York State Association of Realtors* (NYSAR) indicates closed sales in New York State were up 21.1 percent in November when compared to the prior year. The median sale price also increased in November to \$335,000, representing a year-over-year increase of almost 22 percent. Growth in median sale prices is expected to continue due to a limited supply of available inventory in many areas. Statewide, the number of homes for sale fell almost 21 percent in November when compared to the prior year. A healthy market generally offers a 6.5-month supply of inventory; according to NYSAR, in November 2020, there was a 3.9-month supply of available inventory.

In the third quarter of 2020, the residential real estate market in Westchester County posted a significant quarterly sales gain of 25.5 percent, when compared to the previous quarter; this indicates that the market has rebounded from the impacts of the pandemic. The median sale price (for single family homes) increased 14.1 percent in the third quarter; growth in median sale prices has been attributed to strong buyer demand and a tight supply of available inventory.

Table 3 - Number of Home Sales and Median Prices in Westchester County

County	2020 Q3		2020 Q2		Change	
	# Sales	Median Price*	# Sales	Median Price*	# Sales	Median Price*
Westchester County	2,171	\$811,000	1,730	\$710,500	25.5%	14.1%

Source: One Key MLS

*Median Prices for Single Family Homes

As shown in Table 4, housing turnover in the New Rochelle Central School was at the lowest level of the historical period (2008 - 2019) in 2009 when 252 units were sold. Subsequently, sales increased to the historical period peak of 581 units in 2018; there were 520 sales recorded last year in 2019. The median sale price was \$625,250 in 2019; this reflects stability when compared to the previous year.

Table 4 - Home Sales in the City School District of New Rochelle 2008 - 2019

Year	Number Sold	Median Price
2008	356	\$582,750
2009	252	\$556,250
2010	350	\$576,900
2011	330	\$528,251
2012	362	\$542,250
2013	454	\$542,250
2014	477	\$575,000
2015	547	\$580,000
2016	528	\$590,300
2017	575	\$621,000
2018	581	\$625,000
2019	520	\$625,250

Source: NYS Office of Real Property Services

Housing data for the area encompassed by the City School District of New Rochelle indicated that in 2019, 95 percent of the total housing was occupied and five percent was vacant. Occupied housing can be inhabited by the owner of the house or a renter. In 2019, 51 percent of housing in the district was owner occupied and 49 percent was renter occupied.

The Planning and Development Department of the City of New Rochelle was contacted regarding the status of building projects currently under construction, as well as any new proposals before the Planning Board. The City reported that 484 residential units have been completed since the previous update last year. As shown in Table 5, 2,025 residential units are currently under construction; an additional 4,178 units have been approved. As reported by the City, 1,659 units are anticipated to have a C/O in 2021; 3,558 units are anticipated to have a C/O in 2022; and 986 units are anticipated to have a C/O in 2023.

Table 5 - Approved and Proposed Housing in the City School District of New Rochelle

Project Name	Location	Type of Units	Anticipated C/O	Student Yield
COMPLETED				
164 Union Avenue	164 Union Avenue	10 S; 55 one-BR; 10 two-BR = 75 apartments		2
NewRo Studios	11 Burling Lane	73 studio apartments		0
The Millenia	20 Burling Lane	27 S; 65 one-BR; 18 two-BR = 110 apartments		4
The Rockwell (North Avenue East)	583 North Avenue	20 S; 59 one-BR; 28 two-BR; 7 three-BR = 114 apartments		6
The Standard	251 North Avenue/ 50 LeCount Place	13 S; 92 one-BR; 7 two-BR = 112 apartments		2
UNDER CONSTRUCTION				
10 Commerce Drive	10 Commerce Drive	53 S; 64 one-BR; 55 two-BR = 172 apartments	2021	9
14 LeCount Place (Phase I)	14 LeCount Place	86 S; 207 one-BR; 85 two-BR; 2 three-BR = 380 apartments	2021	15
339 Huguenot Street	339 Huguenot Street	66 S; 132 one-BR; 87 two-BR = 285 apartments	2021	14
Beckwithe Pointe	700 Davenport Avenue	72 three-BR condos	2021	15
Church-Division Tower A	26 S Division Street/55 Clinton Place	55 S; 142 one-BR; 151 two-BR; 4 three-BR = 352 apartments	2021	24
Modera New Rochelle	24 Maple Avenue	8 S; 201 one-BR; 125 two-BR = 334 apartments	2021	21
The Huguenot	387/393 Huguenot Street	20 S; 37 one-BR; 3 two-BR = 60 apartments	2021	1
25 Maple Avenue	25 Maple Avenue	54 S; 100 one-BR; 30 two-BR = 184 apartments	2022	5
26 Garden Street	26 Garden Street	34 S; 102 one-BR; 50 two-BR = 186 apartments	2022	8
APPROVED				
709 Main Street	709 Main Street	4 two-BR apartments	2021	1

Project Name	Location	Type of Units	Anticipated C/O	Student Yield
11 Garden Street	11 Garden Street	48 S; 105 one-BR; 65 two-BR; 1 three-BR = 219 apartments	2022	10
14 LeCount Place (Phase II)	14 LeCount Place	38 S; 78 one-BR; 57 two-BR = 173 apartments	2022	9
2 Hamilton Avenue	2 Hamilton Avenue	17 S; 24 one-BR; 13 two-BR; 2 three-BR= 56 apartments	2022	2
247 North Avenue	247 North Avenue	28 S; 144 one-BR; 72 two-BR = 244 apartments	2022	12
277 North Avenue	277 North Avenue	141 S; 195 one-BR; 103 two-BR; 3 three-BR = 442 apartments	2022	18
316 Huguenot Street	316 Huguenot Street	112 S; 158 one-BR; 45 two-BR = 315 apartments	2022	8
327 Huguenot Street	327 Huguenot Street	49 S; 150 one-BR; 50 two-BR = 249 apartments	2022	9
500 Main Street	500 Main Street	110 S; 218 one-BR; 149 two-BR = 477 apartments	2022	24
525 Main Street	525 Main Street	31 S; 268 one-BR; 46 two-BR; 6 three-BRR = 351 apartments	2022	11
64 Centre Avenue	64 Centre Avenue	48 S; 72 one-BR; 24 two-BR = 144 apartments	2022	4
8 Westchester Place	8 Westchester Place	25 S; 36 one-BR; 11 two-BR = 72 apartments	2022	2
DSF Tower II (2 Shearwood Place)	2 Shearwood Place	54 S; 142 one-BR; 88 two-BR; 17 three-BR = 301 apartments	2022	18
North Avenue West	600 North Avenue	16 S; 40 one-BR; 16 two-BR; 3 three-BR = 75 apartments	2022	4
The Luxuria	57 Grand Street	30 S; 40 one-BR = 70 apartments	2022	1
11 Lawton Street	11 Lawton Street	174 S; 205 one-BR; 148 two-BR; 66 three-BR; 3 four-BR = 596 apartments	2023	39
Church-Division Tower B	28 S Division Street/ 50 Clinton Place	69 S; 184 one-BR; 132 two-BR; 5 three-BR = 390 apartments	2023	23
TOTAL = 6,687 units		1,509 S; 3,315 one-BR; 1,672 two-BR; 188 three-BR; 3 four-BR		

Bold = New project since last report

The *Census Bureau* reported that the homeownership rate for the third quarter of 2020 was 67.4 percent; this compares to the ten-year (2010-2020) low of 62.9 percent recorded in 2016. In the third quarter of 2020, the homeownership rate was highest amongst individuals aged 65+ (80.7 percent), followed by the 55 - 64, 45 - 54 and 35 - 44 age segments, with homeownership rates of 76.4, 72.0 and 63.9 percent, respectively. Young adults under the age of 35 recorded the lowest homeownership rate at 40.2 percent in the third quarter of 2020. It should be noted that each age segment, with the exception of individuals aged 65+, recorded a lower homeownership rate when compared to the previous quarter.

This correlates to a recent study issued by The *Pew Research Center* which reported that as of July 2020, a majority (52 percent) of young adults (18-29 years) live with their parents; this is the greatest percentage for this group recorded since the *Great Depression*. Although this trend has accelerated since the onset of the COVID-19 pandemic, as shown in Figure 6, increases have been observed since 1960, when the share of young adults living with their parents was at a low of 29 percent.

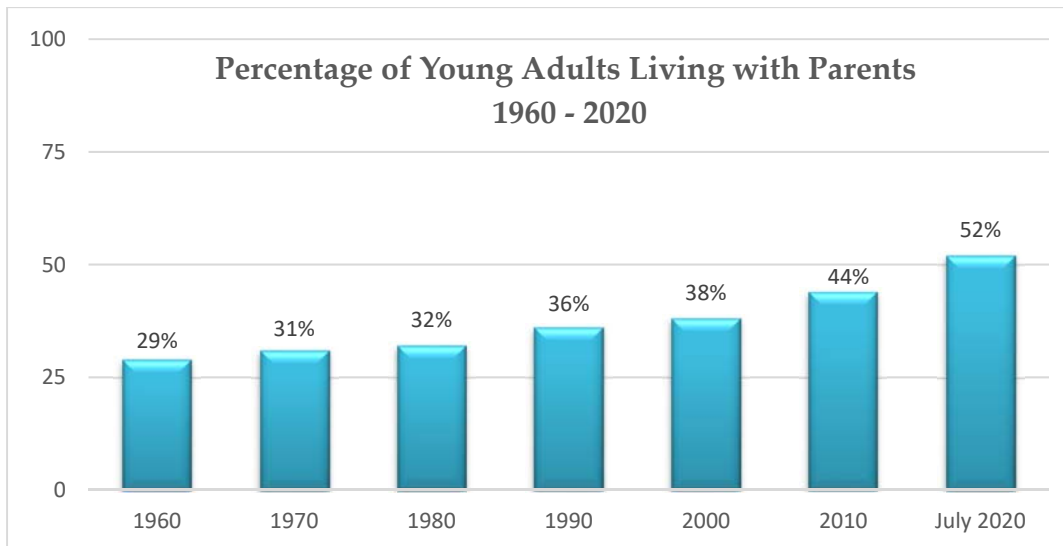


Figure 6 - Percentage of Young Adults Living with Parents 1960 - 2020
Source: Pew Research Center

D. NON-PUBLIC SCHOOL ENROLLMENT

Data from the *Census Bureau* shows that there were 5.7 million K - 12 students (10.7 percent of all school-age children) in the United States enrolled in private schools in the 2019-20 school year. Private school enrollment declined between 2010 and 2019 by nearly 300,000 students, with further losses expected in the future.

Census Bureau data shows that in 2019, private schools in New York State enrolled approximately 430,000 students; this reflects a decrease of 6.5 percent since 2010, when approximately 460,000 students attended private schools. However, while the number of students has decreased, the share of total school children enrolled in private schools has grown from 14.0 to 14.7 percent during this period. Between 2010 and 2019, the percentage of all school age children attending private schools in Westchester County decreased from 12.8 to 10.7 percent.

Within the City of New Rochelle, 1,625 resident students (13.6 percent) attended non-public schools in 2019. Non-public enrollment has declined since 2007, when 2,261 students, or 18.1 percent of district resident students, attended private schools.

Private school enrollment has been impacted by declining Catholic school enrollment, which has dropped substantially since its peak in the early 1960's, when more than 5.2 million students were enrolled in nearly 13,000 Catholic schools. The *National Catholic Education Association* reported that there were approximately 1.7 million students enrolled in 6,183 Catholic schools in the United States during the 2019-20 school year. In the past ten years, the most significant Catholic school enrollment decline was at the elementary school level, with a decrease of approximately 24 percent.

Private school enrollment has also been impacted by growth in the number of charter schools in the United States. Charter schools offer a tuition-free alternative to traditional public school settings, while providing the individualized attention often offered in private schools. As indicated in Figure 7, data from the *National Alliance for Public Charter Schools* shows that charter school enrollment has increased significantly, growing from 1.2 million students in 2006 to 3.3 million students in 2018 (latest available data). In 2018, there were approximately 7,500 charter schools in the United States, enrolling 6.5 percent of all public school students.

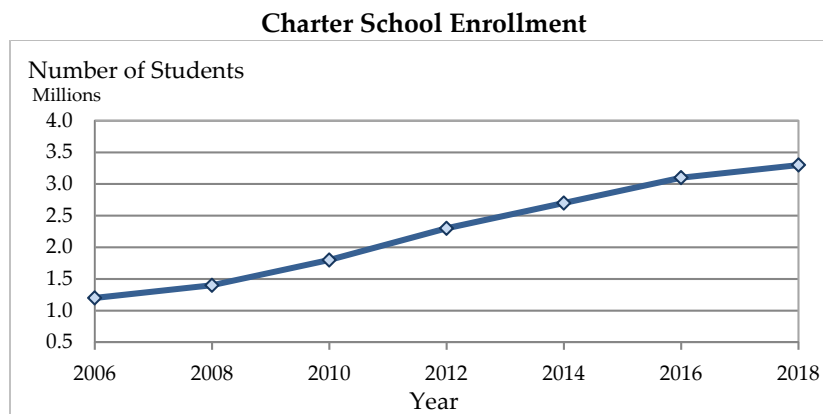


Figure 7 - Charter School Enrollment
Source: National Alliance for Public Charter Schools

According to the *New York State Education Department*, there are currently 326 charter schools serving over 150,000 students in New York State; there are approximately 25 additional charter schools approved to open in in the near future. At the present time, there are two charter schools in operation in Westchester County, located in Yonkers City and Mount Vernon.

E. ENROLLMENT PROJECTION METHODOLOGY

The *Cohort Survival Technique* was used to project the district’s enrollment patterns for the next ten years. Three basic inputs were necessary:

1. Actual enrollment by grade for 2010 - 2020 for the district [*Appendix A-2*] and each school [*Appendix A-9, A-10, A-11, A-12, A-13, A-14, A-15, A-16, A-17, A-18*].
2. Grade-to-grade retention (migration) ratios for each two-grade transition to grades 1 - 12 for the past ten years for the district [*Appendix A-2*] and each school [*Appendix A-9, A-10, A-11, A-12, A-13, A-14, A-15, A-16, A-17, A-18*].
3. Projected kindergarten entering cohorts based on the number of live births in Westchester County, with consideration given to school district births, five years before each year projected [*Appendix A-4*].

The *Cohort Survival Model* takes into consideration the normal community processes that affect school enrollment, which include:

1. The number of births and fertility rates
2. Normal in and out migration
3. Transfers to and from non-public schools
4. Population variations
5. Resident family characteristics

The enrollment projections contained within this report are based on assumptions generated through the demographic analysis. *This analysis led to the following assumptions:*

1. Population will continue to grow due to new residential development within the district. The turnover of approximately 530 - 580 homes each year is anticipated to continue.
2. Future kindergarten enrollment is anticipated to be at a lower level than seen during the last ten years, ranging within 761 - 781 students during the next five years; subsequently, kindergarten cohorts are projected to further decrease (688 - 704 students) between 2026 and 2030, as a result of an anticipated decline in births due to the pandemic.
3. Non-public school enrollment will remain at approximately 14 percent of district resident students, as has been experienced in the last few years.

The *Cohort Survival Model* is very accurate in forecasting future enrollment patterns, but the occurrence of certain conditions would warrant modifications in these projections. *These conditions include:*

- A level of new housing activity or a change in the level of housing turnover which is significantly higher or lower than that experienced by the district during the past three years.
- Expansion, consolidation, closing or the establishment of new non-public or charter schools.
- Major sociological changes or changed values/attitudes affecting anticipated family size and birthrate.
- Household characteristics that significantly differ from the past three - five years, including number of persons per household and age of household occupants.
- A major local or national crisis resulting in a significant change to economic conditions that affect employment, finance, and housing in a manner dissimilar to the past three - five years.

It is important for the reader to understand the nature of enrollment projections. Regardless of the methodology employed to produce projections, *all outcomes fall into three categories of reliability:*

Category 1 - Those projections based on students already enrolled in the system are the most reliable projections.

Category 2 - Those projections based on documented births are slightly less reliable than those of Category 1.

Category 3 - Those projections based on estimates of future births are the least reliable.

Therefore, the most reliable projections are those calculated for the periods closest in time. Projections for periods further out in time are less reliable, particularly those beyond five years from the year of the study. The five-year period (2021 - 2025) projections are those best used in district planning and decision making. That is because this period consists mainly of Category 1 projections.

It is noted that the overall enrollment projections produced by Western Suffolk BOCES generally fall within a 4 percent margin of error. The greatest discrepancies in projections occur in the smallest subsets of those projections. For example, the projections for the district as a whole are likely to be the most accurate, while the projection of a building's particular grade level in a specific year is likely to be the least accurate. It is advised that updates to projections be continued on a periodic basis to maintain modifications warranted by subtle shifts in migration trends and demographic factors.

F. ACCURACY OF PREVIOUS PROJECTIONS

A comparison was made between the enrollment projections presented in the 2019-20 Western Suffolk BOCES study and the actual enrollment observed in the 2020-21 school year. As shown in *Appendix A-1* and Table 6, the 2019-20 study projected the 2020-21 K - 12 enrollment at 10,365 students, while there were actually 10,005 students enrolled. This projection was within 360 students of the actual enrollment, reflecting accuracy within 3.6 percent.

The 2020-21 projections for each grade level showed variations ranging from 6 - 116 students of the actual enrollments. The largest discrepancies were in the kindergarten and twelfth grade projections, which were over-projected by 102 and 116 students, respectively. The discrepancy in the kindergarten projection appears to be related to the current pandemic, as there are indications of parental trends to postpone kindergarten registration due to concerns regarding COVID-19. The discrepancy in the twelfth-grade projection is likely related to credit accumulation issues.

An inspection of the variations in the enrollment, particularly in the grade-to-grade migrations, revealed fluctuations. On average, the district loses students in transition to most grades; however, average gains are noted in transition to grades 9 and 12 and average maintenance is noted in transition to fourth grade.

Table 6 - Accuracy of the Western Suffolk BOCES 2019-20 Projections for 2020-21

Grades	2020-21 Actual	2020-21 Projected	Difference	Projected/Actual
K - 12	10,005	10,365	360	103.6%
K - 5	4,446	4,604	158	103.6%
6 - 8	2,202	2,276	74	103.4%
9 - 12	3,357	3,485	128	103.8%

G. DISTRICT ENROLLMENT

The City School District of New Rochelle educates students within grades K - 12 in eleven district schools. The elementary grades (K - 5) are housed in seven buildings: Henry Barnard Early Childhood Center, Columbus Elementary School, George M. Davis Elementary School, Jefferson Elementary School, Trinity Elementary School, William B. Ward Elementary School and Daniel Webster Magnet School. The middle grades (6 - 8) are housed in two buildings: Albert Leonard Middle School and Isaac E. Young Middle School. The secondary grades (9 - 12) are housed at New Rochelle High School and Campus Alternative High School.

Table 7 presents the current and projected enrollment through 2030 for the district and each grade configuration. It is shown that the elementary (K - 5) grade configuration is expected to be at its projection period peak enrollment in 2022, while the middle (6 - 8) and high school (9 - 12) grades are expected to enroll the greatest numbers of students in 2021. District enrollment is also expected to be at its projection period peak in 2021, when 9,904 students are anticipated; this is a decrease of 101 students, when compared to the current enrollment.

Table 7 - Projected City School District of New Rochelle Enrollment

Year	K - 5	6 - 8	9 - 12	K - 12
Actual 2020	4,446	2,202	3,357	10,005
Projected 2021	4,398	2,213*	3,293*	9,904*
2022	4,431*	2,175	3,189	9,795
2023	4,415	2,097	3,146	9,658
2024	4,398	2,045	3,129	9,572
2025	4,385	2,078	3,034	9,497
2026	4,356	2,012	3,034	9,402
2027	4,292	2,005	2,954	9,251
2028	4,216	2,002	2,907	9,125
2029	4,141	2,051	2,863	9,055
2030	4,074	2,044	2,854	8,972

* = denotes peak enrollment during 2021 – 2030

Table 8 presents projected enrollment through 2030 from a total of thirteen new housing projects (as listed on page 12 of this document) within the City of New Rochelle that were completed in 2020 (five) and that are anticipated to be complete in 2021 (eight). The PUMS (Public Use Microdata Sample) multiplier was applied in order to develop student generation rates. The PUMS multiplier was developed by WXY Consultants using Census based data covering a geographic area in proximity to New Rochelle and is customized to developments similar in nature to those being proposed in the New Rochelle community. The anticipated student yield from these new housing projects is 114 students.

It is shown that the elementary (K - 5) grade configuration is expected to be at its projection period peak enrollment in 2022, while the middle (6 - 8) and high school (9 - 12) grades are expected to enroll the greatest numbers of students in 2021. District enrollment is also expected to be at its peak in 2021, when 9,967 students are anticipated; this represents a decrease of 38 students, when compared to the current enrollment [Appendix B-1, B-2].

Table 8 - City SD of New Rochelle Projected Enrollment w/New Housing

Year	K - 5	6 - 8	9 - 12	K - 12
Actual 2020	4,446	2,202	3,357	10,005
Projected 2021	4,439	2,223*	3,305*	9,967*
2022	4,497*	2,198	3,212	9,907
2023	4,467	2,124	3,170	9,761
2024	4,437	2,076	3,155	9,668
2025	4,411	2,111	3,063	9,585
2026	4,372	2,044	3,070	9,486
2027	4,298	2,035	2,995	9,328
2028	4,216	2,027	2,952	9,195
2029	4,141	2,067	2,908	9,116
2030	4,074	2,050	2,897	9,021

* = denotes peak enrollment during 2021 – 2030

District enrollment [Appendix A-2, A-6] consisted of 10,596 students in grades K - 12 in 2010. Gains in three of the next four years resulted in the historical peak enrollment of 10,708 students in 2014. Subsequently, losses in five of the last six years led to the enrollment of 10,005 students in 2020, representing an overall loss of 591 students, or 5.6 percent, during the historical period. However, a loss of 703 students is noted since the peak enrollment in 2014.

Enrollment is forecasted to decrease in each of the next ten years. The projected 2030 enrollment of 8,972 students represents a loss of 1,033 students, or 10.3 percent, when compared to the current enrollment.

The projected enrollment can be attributed to several factors:

☞ **First**, the kindergarten enrolled between 772 - 846 students in each of the last ten years; there are currently 697 students enrolled. Due to lower birth levels, kindergarten cohorts are projected to range within 688 - 781 kindergarten students per year through 2030 [Appendix A-4].

It is noted that the kindergarten enrollment this year is the lowest of the historical period. There are indications that this may be related to the Pandemic. Therefore, higher ratios have been applied to the 2021-22 kindergarten and first grade projections, in anticipation that these students may enter the district next year.

☞ **Second**, the incoming kindergarten class was larger than the exiting twelfth grade class of the previous year in seven of the last ten years. This trend is expected to continue during the projection period, with anticipated gains of between 22 - 71 students expected in seven of the next ten years [Appendix A-8]. However, these gains will be minimized by losses in transition.

☞ **Third**, migration ratios show year-to-year fluctuations. On average, the district loses students in transition to most grades (1, 2, 3, 5, 6, 7, 8, 10 & 11); average gains are noted in transition to grades 9 and 12 (most likely reflective of credit accumulation issues) and average maintenance is noted in transition to fourth grade. It is noted that historically low transition rates were recorded during the last two years to grades 1, 3, 4, 6, 7, 8 and 12 [Appendix A-2].

☞ **Fourth**, the average grade level size decreased in grades K - 4, 6, 7, 9 and 12 during 2015 - 2020 as compared to 2010 - 2015. Grade level size decreases are anticipated in grades K - 12 during 2020 - 2030 [Appendix A-8].

H. ENROLLMENT OF GRADE CONFIGURATIONS

ELEMENTARY GRADES (K - 5) ENROLLMENT *[Appendix A-3, A-7]*

The elementary enrollment consisted of 4,802 students in grades K - 5 in 2010. Gains in four of the next five years resulted in the historical peak enrollment of 4,929 students in 2015. Subsequently, losses in each of the last five years led to the enrollment of 4,446 students in 2020. This represents an overall loss of 356 students, or 7.4 percent, during the historical period.

Decreases are expected in nine of the next ten years. The forecasted 2030 enrollment of 4,074 students represents a loss of 372 students, 8.4 percent, when compared to the current enrollment.

Table 9 presents the current and projected enrollment through 2030 in the district’s elementary schools. It is shown that George M. Davis and William B. Ward Elementary Schools are expected to be at their projection period peak enrollments in 2021; Columbus Elementary School is expected to enroll the greatest number of students in 2022; Henry Barnard and Trinity Elementary Schools are expected to be at their projection period peak enrollments in 2023, while Daniel Webster and Jefferson Elementary Schools are expected to enroll the greatest numbers of students in 2024 and 2025, respectively. Note: Please refer to Appendix B for projected elementary school enrollments, which include anticipated student yields from new and approved housing.

Table 9 - Projected City School District of New Rochelle Elementary Enrollment

Year	Henry Barnard (K - 2)	Columbus (K - 5)	George M. Davis (K - 5)	Jefferson (K - 5)	Trinity (K - 5)	William B. Ward (K - 5)	Daniel Webster (K - 5)	Total (K - 5)
Actual 2020	265	749	663	510	819	958	482	4,446
Projected 2021	255	726	667*	497	827	954*	472	4,398
2022	262	735*	665	501	853	945	470	4,431*
2023	275*	726	653	500	862*	923	476	4,415
2024	273	717	653	505	846	926	478*	4,398
2025	271	729	649	512*	844	906	474	4,385
2026	261	722	650	503	825	923	472	4,356
2027	254	712	640	496	814	910	466	4,292
2028	248	703	629	487	799	894	456	4,216
2029	248	692	617	478	784	875	447	4,141
2030	246	681	608	469	772	860	438	4,074

*denotes peak enrollment during 2021 - 2030

Henry Barnard Early Childhood Center *[Appendix 9]*

Henry Barnard Early Childhood Center enrolled 300 students in grades K - 2 in 2010. Gains in two of the next three years resulted in the historical peak enrollment of 328 students in 2013. Subsequently, losses in four of the last seven years led to the current enrollment of 265 students in 2020. This represents a loss of 35 students, or 11.7 percent, during the historical period.

Enrollment is expected to remain stable during the next ten years. The forecasted 2030 enrollment of 246 students represents a loss of 19 students when compared to the current enrollment. It is anticipated that the kindergarten enrollment will range between 92 - 104 students per year and will account for approximately 13 percent of the district's kindergarten population *[Appendix A-5]*.

Henry Barnard Early Childhood Center displays the average trend to lose students in transition to first and second grades. However, the entering kindergarten class is expected to be larger than the exiting second grade class of the previous year in each of the next ten years, minimizing the losses occurring through transition. These factors will result in the projected enrollment pattern.

Columbus Elementary School *[Appendix A-10]*

Columbus Elementary School enrolled 825 students in grades K - 5 in 2010. Gains in two of the next three years resulted in the historical peak enrollment of 850 students in 2013. Subsequently, losses in six of the last seven years led to the current enrollment of 749 students in 2020. This represents a loss of 76 students, or 9.2 percent, during the historical period. However, a loss of 101 students is noted since the peak enrollment in 2013.

Decreases are expected in eight of the next ten years. The forecasted 2030 enrollment of 681 students represents a loss of 68 students, 9.1 percent, when compared to the current enrollment. It is anticipated that the kindergarten enrollment will range between 107 - 121 students and will average approximately 16 percent of the district's kindergarten population *[Appendix A-5]*.

Columbus Elementary School displays the average trend to gain students in transition to first, third and fourth grades and lose students in transition to second and fifth grades. The entering kindergarten class is expected to be smaller than the exiting fifth grade class of the previous year in eight of the next ten years, minimizing any gains occurring through transition. These factors will result in the projected enrollment pattern.

George M. Davis Elementary School *[Appendix A-11]*

George M. Davis Elementary School enrolled 665 students in grades K - 5 in 2010. Gains in each of the next five years resulted in the historical peak enrollment of 763 students in 2015. Subsequently, losses in four of the last five years led to the current enrollment of 663 students in 2020. This represents overall stability (loss of two students) during the historical period. However, a loss of 100 students is noted since the peak enrollment in 2015.

Decreases are expected in seven of the next ten years. The forecasted 2030 enrollment of 608 students represents a loss of 55 students, 8.3 percent, when compared to the current enrollment. It is anticipated that the kindergarten enrollment will range between 103 - 117 students and will average approximately 15 percent of the district's kindergarten population *[Appendix A-5]*.

George M. Davis Elementary School displays the average trend to gain students in transition to third grade, maintain students in transition to first grade and lose students in transition to second, fourth and fifth grades. The entering kindergarten class is expected to be larger than the exiting fifth grade class of the previous year in eight of the next ten years, minimizing the losses occurring through transition. These factors will result in the projected enrollment pattern.

Jefferson Elementary School *[Appendix A-12]*

Jefferson Elementary School enrolled 601 students in grades K - 5 in 2010. Gains in three of the next five years resulted in the historical peak enrollment of 630 students in 2015. Subsequently, losses in each of the last five years led to the current enrollment of 510 students in 2020. This represents a loss of 91 students, or 15.1 percent, during the historical period. However, a loss of 120 students is noted since the peak enrollment in 2015.

Decreases are expected in seven of the next ten years. The forecasted 2030 enrollment of 469 students represents a loss of 41 students, 8.0 percent, when compared to the current enrollment. It is anticipated that the kindergarten enrollment will range between 70 - 80 students and will average approximately 10 percent of the district's kindergarten population *[Appendix A-5]*.

Jefferson Elementary School displays the average trend to gain students in transition to grades 1 - 3, lose students in transition to fourth grade and maintain students in transition to fifth grade. The entering kindergarten class is expected to be smaller than the exiting fifth grade class of the previous year in each of the next ten years, minimizing the gains occurring through transition. These factors will result in the projected enrollment pattern.

Trinity Elementary School *[Appendix A-13]*

Trinity Elementary School enrolled 856 students in grades K - 5 in 2010. Gains in three of the next five years resulted in the historical peak enrollment of 904 students in 2015. Subsequently, losses in four of the last five years led to the current enrollment of 819 students in 2020. This represents a loss of 37 students, or 4.3 percent, during the historical period. However, a loss of 85 students is noted since the peak enrollment in 2015.

Decreases are expected in seven of the next ten years. The forecasted 2030 enrollment of 772 students represents a loss of 47 students, 5.7 percent, when compared to the current enrollment. It is anticipated that the kindergarten enrollment will range between 118 - 134 students and will average approximately 17 percent of the district's kindergarten population *[Appendix A-5]*.

Trinity Elementary School displays the average trend to gain students in transition to second and third grades, maintain students in transition to fourth grade and lose students in transition to first and fifth grades. The entering kindergarten class is expected to be smaller than the exiting fifth grade class of the previous year in nine of the next ten years, minimizing any gains occurring through transition. These factors will result in the projected enrollment pattern.

William B. Ward Elementary School *[Appendix A-14]*

William B. Ward Elementary School enrolled 1,011 students in grades K - 5 in 2010. Gains in four of the next seven years resulted in the historical peak enrollment of 1,058 students in 2017. Subsequently, losses in two of the last three years led to the current enrollment of 958 students in 2020. This represents a loss of 53 students, or 5.2 percent, during the historical period. However, a loss of 100 students is noted since the peak enrollment in 2017.

Decreases are expected in eight of the next ten years. The forecasted 2030 enrollment of 860 students represents a loss of 98 students, 10.2 percent, when compared to the current enrollment. It is anticipated that the kindergarten enrollment will range between 139 - 158 students and will average approximately 20 percent of the district's kindergarten population *[Appendix A-5]*.

William B. Ward Elementary School displays the average trend to gain students in transition to second grade, maintain students in transition to fifth grade and lose students in transition to first, third and fourth grades. The entering kindergarten class is expected to be smaller than the exiting fifth grade class of the previous year in eight of the next ten years. These factors will result in the projected enrollment pattern.

Daniel Webster Elementary School *[Appendix A-15]*

Daniel Webster Elementary School enrolled 544 students in grades K - 5 in 2010. Gains in one of the next two years resulted in the historical peak enrollment of 556 students in 2012. Subsequently, losses in seven of the last eight years led to the current enrollment of 482 students in 2020. This represents a loss of 62 students, or 11.4 percent, during the historical period. However, a loss of 74 students is noted since the peak enrollment in 2012.

Decreases are expected in eight of the next ten years. The forecasted 2030 enrollment of 438 students represents a loss of 44 students, 9.1 percent, when compared to the current enrollment. It is anticipated that the kindergarten enrollment will range between 59 - 67 students and will average approximately nine percent of the district's kindergarten population *[Appendix A-5]*.

Daniel Webster Elementary School displays the average trend to lose students in transition to first grade and gain students in transition to grades 2 - 5. The entering kindergarten class is expected to be smaller than the exiting fifth grade class of the previous year in each of the next ten years, minimizing the gains occurring through transition. These factors will result in the projected enrollment pattern.

MIDDLE GRADES (6 - 8) ENROLLMENT *[Appendix A-3, A-7]*

The district enrolled 2,381 students in grades 6 - 8 in 2010. Gains in four of the next six years resulted in the historical peak enrollment of 2,444 students in 2016. Subsequently, losses in each of the last four years led to the enrollment of 2,202 students in 2020. This represents an overall loss of 179 students, or 7.5 percent, during the historical period.

Decreases are expected in seven of the next ten years. The forecasted 2030 enrollment of 2,044 students represents a loss of 158 students, or 7.2 percent, when compared to the current enrollment.

Table 10 details the current and projected middle school enrollment for the City School District of New Rochelle. It is shown that Albert Leonard Middle School is expected to be at its projection period peak enrollment of 1,095 students in 2022, while Isaac E. Young Middle School is expected to be at its peak in 2021, with 1,123 students. Note: Please refer to Appendix B for projected middle school enrollments, which include anticipated student yields from new and approved housing.

Table 10 - City SD of New Rochelle Projected Middle School Enrollment

Year	Albert Leonard MS	Isaac E. Young MS	Total 6 - 8
Actual 2020	1,124	1,078	2,202
Projected 2021	1,090	1,123*	2,213*
2022	1,095*	1,080	2,175
2023	1,090	1,007	2,097
2024	1,055	990	2,045
2025	1,071	1,007	2,078
2026	999	1,013	2,012
2027	1,007	998	2,005
2028	983	1,019	2,002
2029	1,032	1,019	2,051
2030	1,028	1,016	2,044

*=denotes peak enrollment during 2021 - 2030

Albert Leonard Middle School [Appendix A-16]

Albert Leonard Middle School enrolled 1,228 students in grades 6 - 8 in 2010. Gains in four of the next eight years resulted in the historical peak enrollment of 1,262 students in 2018. Subsequently, losses in each of the last two years led to the enrollment of 1,124 students in 2020, representing a loss of 104 students, or 8.5 percent, during the historical period.

Decreases are expected in six of the next ten years. The forecasted 2030 enrollment of 1,028 students represents a loss of 96 students, or 8.5 percent, when compared to the current enrollment.

This school displays the average trend to lose students in transition to grades 6 - 8. The entering sixth grade class is expected to be larger than the exiting eighth grade class of the previous year in six of the next ten years. These factors will result in the projected enrollment pattern.

Isaac E. Young Middle School [Appendix A-17]

Isaac E. Young Middle School enrolled 1,153 students in grades 6 - 8 in 2010. Gains in four of the next six years resulted in the historical peak enrollment of 1,224 students in 2016. Subsequently, losses in three of the last four years led to the enrollment of 1,078 students in 2020, representing a loss of 75 students, or 6.5 percent, during the historical period.

Enrollment is expected to be at its projection period peak of 1,123 students in 2021. Subsequently, losses in five of the nine remaining years of the period will lead to the forecasted 2030 enrollment of 1,016 students. This represents a loss of 62 students, or 5.8 percent, when compared to the current enrollment.

This school displays the average trend to lose students in transition to sixth and eighth grades and gain students in transition to seventh grade. The entering sixth grade class is expected to be smaller than the exiting eighth grade class of the previous year in six of the next ten years. These factors will result in the projected enrollment pattern.

SECONDARY GRADES ENROLLMENT (9 - 12) *[Appendix A-3, A-7]*

New Rochelle High School *[Appendix A-18]*

New Rochelle High School enrolled 3,413 students in grades 9 - 12 in 2010. Gains in four of the next seven years resulted in the historical peak enrollment of 3,481 students in 2017. Subsequently, losses in two of the last three years led to the enrollment of 3,357 students in 2020, representing a loss of 56 students, or 1.6 percent, during the historical period.

Decreases are expected in nine of the next ten years. The forecasted 2030 enrollment of 2,854 students represents a loss of 503 students, or 15.0 percent, when compared to the current enrollment.

This school displays the average trend to lose students in progression to tenth and eleventh grades and gain students in transition to twelfth grade. The entering ninth grade class is expected to be larger than the exiting twelfth grade class of the previous year in each of the next ten years. These factors will result in the projected enrollment pattern.

Appendix A

=====

CITY SCHOOL DISTRICT OF NEW ROCHELLE
 ACCURACY OF WESTERN SUFFOLK BOCES 2019-20 PROJECTIONS FOR 2020-21

=====

GRADE	Actual 2020-21	Projected	Difference	
KINDERGARTEN	697	799	102	
FIRST	771	785	14	
SECOND	753	759	6	
THIRD	736	736	0	
FOURTH	694	715	21	
FIFTH	773	789	16	
SIXTH	774	809	35	
SEVENTH	690	703	13	
EIGHTH	718	744	26	
NINTH	920	955	35	
TENTH	903	923	20	
ELEVENTH	738	694	-44	
TWELFTH	740	856	116	
UNGRADED	98	98	0	Projected/Actual
K - 12	10,005	10,365	360	103.6%
K - 5	4,446	4,604	158	103.6%
6 - 8	2,202	2,276	74	103.4%
9 - 12	3,357	3,485	128	103.8%

=====

CITY SCHOOL DISTRICT OF NEW ROCHELLE
HISTORICAL DISTRICT ENROLLMENT

GRADE	2010	2011	2012	2013	2014	2015	2016	2017	2018	2019	2020
KINDERGARTEN	824	785	788	794	846	835	772	783	785	787	697
FIRST	819	834	819	807	796	872	849	766	770	769	771
SECOND	800	819	856	808	796	760	857	825	765	759	753
THIRD	762	799	806	851	801	782	739	852	791	716	736
FOURTH	782	752	792	803	849	807	782	739	847	791	694
FIFTH	776	764	770	785	804	848	805	786	738	834	773
SIXTH	775	784	744	780	804	784	823	783	753	705	774
SEVENTH	790	778	788	757	787	815	782	834	772	742	690
EIGHTH	796	783	774	783	755	799	811	781	849	766	718
NINTH	1,081	1,016	1,023	991	983	959	1,000	1,030	924	1,014	920
TENTH	830	836	788	857	872	815	866	896	910	820	903
ELEVENTH	689	754	759	684	703	680	680	688	703	793	738
TWELFTH	769	713	764	855	808	837	738	820	709	687	740
UNGRADED	103	123	137	129	104	103	98	89	88	103	98
TOTAL K - 12	10,596	10,540	10,608	10,684	10,708	10,696	10,602	10,672	10,404	10,286	10,005
CHANGE		-56	68	76	24	-12	-94	70	-268	-118	-281
% CHANGE		-0.5%	0.6%	0.7%	0.2%	-0.1%	-0.9%	0.7%	-2.5%	-1.1%	-2.7%

Note: 2010-2019: BEDS data from the NYSED, 2020: BEDS data as in the SD's SIRS 313 forms

Note: Preliminary enrollment data used in 2019-20 study has been updated with finalized BEDS data

DISTRICT MIGRATION	10 - 11	11 - 12	12 - 13	13 - 14	14 - 15	15 - 16	16 - 17	17 - 18	18 - 19	19 - 20	AVERAGE
K - 1	101.2%	104.3%	102.4%	100.3%	103.1%	101.7%	99.2%	98.3%	98.0%	98.0%	98.4%
1 - 2	100.0%	102.6%	98.7%	98.6%	95.5%	98.3%	97.2%	99.9%	98.6%	97.9%	98.4%
2 - 3	99.9%	98.4%	99.4%	99.1%	98.2%	97.2%	99.4%	95.9%	93.6%	97.0%	96.6%
3 - 4	98.7%	99.1%	99.6%	99.8%	100.7%	100.0%	100.0%	99.4%	100.0%	96.9%	99.5%
4 - 5	97.7%	102.4%	99.1%	100.1%	99.9%	99.8%	100.5%	99.9%	98.5%	97.7%	99.1%
5 - 6	101.0%	97.4%	101.3%	102.4%	97.5%	97.1%	97.3%	95.8%	95.5%	92.8%	95.7%
6 - 7	100.4%	100.5%	101.7%	100.9%	101.4%	99.7%	101.3%	98.6%	98.5%	97.9%	99.2%
7 - 8	99.1%	99.5%	99.4%	99.7%	101.5%	99.5%	99.9%	101.8%	99.2%	96.8%	99.4%
8 - 9	127.6%	130.7%	128.0%	125.5%	127.0%	125.2%	127.0%	118.3%	119.4%	120.1%	122.9%
9 - 10	77.3%	77.6%	83.8%	88.0%	82.9%	90.3%	89.6%	88.3%	88.7%	89.1%	88.9%
10 - 11	90.8%	90.8%	86.8%	82.0%	78.0%	83.4%	79.4%	78.5%	87.1%	90.0%	86.4%
11 - 12	103.5%	101.3%	112.6%	118.1%	119.1%	108.5%	120.6%	103.1%	97.7%	93.3%	102.8%

CITY SCHOOL DISTRICT OF NEW ROCHELLE
 HISTORICAL DISTRICT ENROLLMENT BY GRADE CONFIGURATION

GRADE	2010	2011	2012	2013	2014	2015	2016	2017	2018	2019	2020
KINDERGARTEN	824	785	788	794	846	835	772	783	785	787	697
FIRST	819	834	819	807	796	872	849	766	770	769	771
SECOND	800	819	856	808	796	760	857	825	765	759	753
THIRD	762	799	806	851	801	782	739	852	791	716	736
FOURTH	782	752	792	803	849	807	782	739	847	791	694
FIFTH	776	764	770	785	804	848	805	786	738	834	773
UNGRADED	39	47	44	36	27	25	20	20	21	21	22
TOTAL K - 5	4,802	4,800	4,875	4,884	4,919	4,929	4,824	4,771	4,717	4,677	4,446
CHANGE		-2	75	9	35	10	-105	-53	-54	-40	-231
% CHANGE		0.0%	1.6%	0.2%	0.7%	0.2%	-2.1%	-1.1%	-1.1%	-0.8%	-4.9%
SIXTH	775	784	744	780	804	784	823	783	753	705	774
SEVENTH	790	778	788	757	787	815	782	834	772	742	690
EIGHTH	796	783	774	783	755	799	811	781	849	766	718
UNGRADED	20	31	38	53	42	39	28	22	16	24	20
TOTAL 6 - 8	2,381	2,376	2,344	2,373	2,388	2,437	2,444	2,420	2,390	2,237	2,202
CHANGE		-5	-32	29	15	49	7	-24	-30	-153	-35
% CHANGE		-0.2%	-1.3%	1.2%	0.6%	2.1%	0.3%	-1.0%	-1.2%	-6.4%	-1.6%
NINTH	1,081	1,016	1,023	991	983	959	1,000	1,030	924	1,014	920
TENTH	830	836	788	857	872	815	866	896	910	820	903
ELEVENTH	689	754	759	684	703	680	680	688	703	793	738
TWELFTH	769	713	764	855	808	837	738	820	709	687	740
UNGRADED	44	45	55	40	35	39	50	47	51	58	56
TOTAL 9 - 12	3,413	3,364	3,389	3,427	3,401	3,330	3,334	3,481	3,297	3,372	3,357
CHANGE		-49	25	38	-26	-71	4	147	-184	75	-15
% CHANGE		-1.4%	0.7%	1.1%	-0.8%	-2.1%	0.1%	4.4%	-5.3%	2.3%	-0.4%
TOTAL K - 12	10,596	10,540	10,608	10,684	10,708	10,696	10,602	10,672	10,404	10,286	10,005
CHANGE		-56	68	76	24	-12	-94	70	-268	-118	-281
% CHANGE		-0.5%	0.6%	0.7%	0.2%	-0.1%	-0.9%	0.7%	-2.5%	-1.1%	-2.7%

=====

CITY SCHOOL DISTRICT OF NEW ROCHELLE
KINDERGARTEN PROJECTIONS

=====

Birth Year	Births		Enrollment Year	District K	Ratios	
	Westchester County	SD			K/ Cnty Births	K/ SD Births
2005	12,095	991	2010	824	0.0681	0.831
2006	11,914	929	2011	785	0.0659	0.845
2007	11,857	909	2012	788	0.0665	0.867
2008	11,517	963	2013	794	0.0689	0.825
2009	11,143	974	2014	846	0.0759	0.869
2010	11,104	987	2015	835	0.0752	0.846
2011	10,719	898	2016	772	0.0720	0.860
2012	10,439	895	2017	783	0.0750	0.875
2013	10,557	914	2018	785	0.0744	0.859
2014	10,641	871	2019	787	0.0740	0.904
2015	10,639	913	2020	697	0.0655	0.763
2016	10,273	897	2021	770		
2017	10,429	910	2022	781		
<i>preliminary 2018</i>	10,091		2023	769		
<i>est. 2019</i>	10,271		2024	761		
<i>est. 2020</i>	10,180		2025	768		
<i>est. 2021</i>	9,467		2026	688		
<i>est. 2022</i>	9,682		2027	704		
<i>est. 2023</i>	9,636		2028	700		
<i>est. 2024</i>	9,486		2029	689	0.0710	0.849
<i>est. 2025</i>	9,492		2030	690	<i>historical average</i>	

=====

=====

CITY SCHOOL DISTRICT OF NEW ROCHELLE
KINDERGARTEN DISTRIBUTION INTO THE SCHOOLS

=====

HISTORICAL	2010	2011	2012	2013	2014	2015	2016	2017	2018	2019	2020
DISTRICT	824	785	788	794	846	835	772	783	785	787	697
Barnard CC	111	101	108	102	114	87	103	107	110	106	85
Columbus ES	141	151	117	142	140	129	109	123	127	106	117
Davis ES	128	89	134	119	123	133	101	122	115	123	97
Jefferson ES	111	103	86	96	79	98	91	72	74	72	80
Trinity ES	126	127	129	114	140	142	124	124	139	130	139
Ward ES	139	152	145	153	180	173	174	173	153	181	116
Webster ES	68	62	69	68	70	73	70	62	67	69	63
PROJECTED	2020	2021	2022	2023	2024	2025	2026	2027	2028	2029	2030
	Actual										
DISTRICT	697	770	781	769	761	768	688	704	700	689	690
Barnard CC	85	103	104	103	101	102	92	94	93	92	92
Columbus ES	117	120	121	119	118	119	107	109	109	107	107
Davis ES	97	115	117	115	114	115	103	105	105	103	103
Jefferson ES	80	79	80	78	78	78	70	72	71	70	70
Trinity ES	139	132	134	132	131	132	118	121	120	119	119
Ward ES	116	155	158	156	154	156	139	143	142	139	140
Webster ES	63	66	67	66	65	66	59	60	60	59	59

=====

=====

CITY SCHOOL DISTRICT OF NEW ROCHELLE
PROJECTED DISTRICT ENROLLMENT

=====

GRADE	2020	2021	2022	2023	2024	2025	2026	2027	2028	2029	2030
	Actual										
KINDERGARTEN	697	770	781	769	761	768	688	704	700	689	690
FIRST	771	701	757	768	756	749	756	677	693	689	678
SECOND	753	758	690	745	755	744	737	744	666	682	678
THIRD	736	728	732	667	720	729	719	712	719	643	659
FOURTH	694	732	724	728	664	717	725	716	709	716	640
FIFTH	773	688	726	718	722	658	711	719	710	703	710
SIXTH	774	740	658	695	687	691	630	680	688	679	673
SEVENTH	690	768	734	653	690	682	686	625	675	683	674
EIGHTH	718	686	764	730	649	686	678	682	621	671	679
NINTH	920	883	843	939	897	798	843	833	838	763	825
TENTH	903	818	785	750	835	798	710	750	741	745	679
ELEVENTH	738	780	707	678	648	721	689	613	648	640	644
TWELFTH	740	758	801	726	697	666	741	708	630	666	658
UNGRADED	98	94	93	92	91	90	89	88	87	86	85
TOTAL K -12	10,005	9,904	9,795	9,658	9,572	9,497	9,402	9,251	9,125	9,055	8,972
CHANGE		-101	-109	-137	-86	-75	-95	-151	-126	-70	-83
% CHANGE		-1.0%	-1.1%	-1.4%	-0.9%	-0.8%	-1.0%	-1.6%	-1.4%	-0.8%	-0.9%

=====

Note: The shaded area denotes (K - 12) grade-level students already in the system.

=====

CITY SCHOOL DISTRICT OF NEW ROCHELLE
PROJECTED DISTRICT ENROLLMENT BY GRADE CONFIGURATION

GRADE	2020	2021	2022	2023	2024	2025	2026	2027	2028	2029	2030
	Actual										
KINDERGARTEN	697	770	781	769	761	768	688	704	700	689	690
FIRST	771	701	757	768	756	749	756	677	693	689	678
SECOND	753	758	690	745	755	744	737	744	666	682	678
THIRD	736	728	732	667	720	729	719	712	719	643	659
FOURTH	694	732	724	728	664	717	725	716	709	716	640
FIFTH	773	688	726	718	722	658	711	719	710	703	710
UNGRADED	22	21	21	20	20	20	20	20	19	19	19
TOTAL K - 5	4,446	4,398	4,431	4,415	4,398	4,385	4,356	4,292	4,216	4,141	4,074
CHANGE		-48	33	-16	-17	-13	-29	-64	-76	-75	-67
% CHANGE		-1.1%	0.8%	-0.4%	-0.4%	-0.3%	-0.7%	-1.5%	-1.8%	-1.8%	-1.6%
SIXTH	774	740	658	695	687	691	630	680	688	679	673
SEVENTH	690	768	734	653	690	682	686	625	675	683	674
EIGHTH	718	686	764	730	649	686	678	682	621	671	679
UNGRADED	20	19	19	19	19	19	18	18	18	18	18
TOTAL 6 - 8	2,202	2,213	2,175	2,097	2,045	2,078	2,012	2,005	2,002	2,051	2,044
CHANGE		11	-38	-78	-52	33	-66	-7	-3	49	-7
% CHANGE		0.5%	-1.7%	-3.6%	-2.5%	1.6%	-3.2%	-0.3%	-0.1%	2.4%	-0.3%
NINTH	920	883	843	939	897	798	843	833	838	763	825
TENTH	903	818	785	750	835	798	710	750	741	745	679
ELEVENTH	738	780	707	678	648	721	689	613	648	640	644
TWELFTH	740	758	801	726	697	666	741	708	630	666	658
UNGRADED	56	54	53	53	52	51	51	50	50	49	48
TOTAL 9 - 12	3,357	3,293	3,189	3,146	3,129	3,034	3,034	2,954	2,907	2,863	2,854
CHANGE		-64	-104	-43	-17	-95	0	-80	-47	-44	-9
% CHANGE		-1.9%	-3.2%	-1.3%	-0.5%	-3.0%	0.0%	-2.6%	-1.6%	-1.5%	-0.3%
TOTAL K - 12	10,005	9,904	9,795	9,658	9,572	9,497	9,402	9,251	9,125	9,055	8,972
CHANGE		-101	-109	-137	-86	-75	-95	-151	-126	-70	-83
% CHANGE		-1.0%	-1.1%	-1.4%	-0.9%	-0.8%	-1.0%	-1.6%	-1.4%	-0.8%	-0.9%

CITY SCHOOL DISTRICT OF NEW ROCHELLE
 AVERAGE GRADE LEVEL SIZE

GRADE	1 10 - 15	2 15 - 20	3 20 - 25	4 25 - 30	2/1	change 3/2	4/3
KINDERGARTEN	812	777	758	707	-4.3%	-2.4%	-6.7%
FIRST	825	800	750	707	-3.0%	-6.3%	-5.7%
SECOND	807	787	741	709	-2.5%	-5.8%	-4.3%
THIRD	800	769	719	697	-3.9%	-6.5%	-3.1%
FOURTH	798	777	710	704	-2.6%	-8.6%	-0.8%
FIFTH	791	797	714	702	0.8%	-10.4%	-1.7%
SIXTH	779	770	708	674	-1.2%	-8.1%	-4.8%
SEVENTH	786	773	703	671	-1.7%	-9.1%	-4.6%
EIGHTH	782	787	706	670	0.6%	-10.3%	-5.1%
NINTH	1,009	975	880	817	-3.4%	-9.7%	-7.2%
TENTH	833	868	815	737	4.2%	-6.1%	-9.6%
ELEVENTH	712	714	712	659	0.3%	-0.3%	-7.4%
TWELFTH	791	755	731	678	-4.6%	-3.2%	-7.3%

DISPLACEMENT BETWEEN ENTERING AND EXITING GRADES

Year	Grade 12	Year	K	Difference
2010	769	2011	785	16
2011	713	2012	788	75
2012	764	2013	794	30
2013	855	2014	846	-9
2014	808	2015	835	27
2015	837	2016	772	-65
2016	738	2017	783	45
2017	820	2018	785	-35
2018	709	2019	787	78
2019	687	2020	697	10
2020	740	2021	770	30
2021	758	2022	781	23
2022	801	2023	769	-32
2023	726	2024	761	35
2024	697	2025	768	71
2025	666	2026	688	22
2026	741	2027	704	-37
2027	708	2028	700	-8
2028	630	2029	689	59
2029	666	2030	690	24

Average Difference 2010 - 2015	28
Average Difference 2015 - 2020	7
Average Difference 2020 - 2025	25
Average Difference 2025 - 2030	12

=====
 HENRY BARNARD EARLY CHILDHOOD CENTER
 HISTORICAL ENROLLMENT
 =====

GRADE	2010	2011	2012	2013	2014	2015	2016	2017	2018	2019	2020
KINDERGARTEN	111	101	108	102	114	87	103	107	110	106	85
FIRST	98	103	100	117	91	100	84	97	99	107	91
SECOND	87	81	85	105	91	67	85	70	78	68	89
UNGRADED	4	2	3	4	1	2	1	1	1	0	0
TOTAL K - 2	300	287	296	328	297	256	273	275	288	281	265
% CHANGE		-4.3%	3.1%	10.8%	-9.5%	-13.8%	6.6%	0.7%	4.7%	-2.4%	-5.7%

Note: 2010-2019: BEDS data from the NYSED, 2020: BEDS data as in the SD's SIRS 313 forms

H. Barnard CC Migration	10 - 11	11 - 12	12 - 13	13 - 14	14 - 15	15 - 16	16 - 17	17 - 18	18 - 19	19 - 20	AVERAGE
K - 1	92.8%	99.0%	108.3%	89.2%	87.7%	96.6%	94.2%	92.5%	97.3%	85.8%	92.5%
1 - 2	82.7%	82.5%	105.0%	77.8%	73.6%	85.0%	83.3%	80.4%	68.7%	83.2%	80.1%

 =====
 HENRY BARNARD EARLY CHILDHOOD CENTER
 PROJECTED ENROLLMENT
 =====

GRADE	2020	2021	2022	2023	2024	2025	2026	2027	2028	2029	2030
	Actual										
KINDERGARTEN	85	103	104	103	101	102	92	94	93	92	92
FIRST	91	79	95	96	95	93	94	85	87	86	85
SECOND	89	73	63	76	77	76	75	75	68	70	69
TOTAL K - 2	265	255	262	275	273	271	261	254	248	248	246
% CHANGE		-3.8%	2.7%	5.0%	-0.7%	-0.7%	-3.7%	-2.7%	-2.4%	0.0%	-0.8%

=====
 COLUMBUS ELEMENTARY SCHOOL
 HISTORICAL ENROLLMENT
 =====

GRADE	2010	2011	2012	2013	2014	2015	2016	2017	2018	2019	2020
KINDERGARTEN	141	151	117	142	140	129	109	123	127	106	117
FIRST	132	150	161	122	140	150	159	114	121	128	110
SECOND	145	134	145	150	117	116	150	154	122	117	121
THIRD	133	149	144	158	154	123	115	165	161	120	129
FOURTH	127	127	139	133	154	146	125	119	172	162	117
FIFTH	137	126	120	136	128	149	151	121	118	166	148
UNGRADED	10	9	11	9	11	13	7	6	6	4	7
TOTAL	825	846	837	850	844	826	816	802	827	803	749
% CHANGE		2.5%	-1.1%	1.6%	-0.7%	-2.1%	-1.2%	-1.7%	3.1%	-2.9%	-6.7%

Note: 2010-2019: BEDS data from the NYSED, 2020: BEDS data as in the SD's SIRS 313 forms

Columbus ES Migration	10 - 11	11 - 12	12 - 13	13 - 14	14 - 15	15 - 16	16 - 17	17 - 18	18 - 19	19 - 20	AVERAGE
K - 1	106.4%	106.6%	104.3%	98.6%	107.1%	123.3%	104.6%	98.4%	100.8%	103.8%	101.9%
1 - 2	101.5%	96.7%	93.2%	95.9%	82.9%	100.0%	96.9%	107.0%	96.7%	94.5%	97.0%
2 - 3	102.8%	107.5%	109.0%	102.7%	105.1%	99.1%	110.0%	104.5%	98.4%	110.3%	105.8%
3 - 4	95.5%	93.3%	92.4%	97.5%	94.8%	101.6%	103.5%	104.2%	100.6%	97.5%	101.5%
4 - 5	99.2%	94.5%	97.8%	96.2%	96.8%	103.4%	96.8%	99.2%	96.5%	91.4%	96.0%

 =====
 COLUMBUS ELEMENTARY SCHOOL
 PROJECTED ENROLLMENT
 =====

GRADE	2020	2021	2022	2023	2024	2025	2026	2027	2028	2029	2030
	Actual										
KINDERGARTEN	117	120	121	119	118	119	107	109	109	107	107
FIRST	110	119	121	122	120	120	121	109	111	111	109
SECOND	121	106	115	117	118	116	116	117	106	108	108
THIRD	129	131	112	120	125	125	124	124	124	113	115
FOURTH	117	131	133	114	121	127	126	126	126	126	115
FIFTH	148	112	126	128	109	116	122	121	121	121	121
UNGRADED	7	7	7	6	6	6	6	6	6	6	6
TOTAL	749	726	735	726	717	729	722	712	703	692	681
% CHANGE		-3.1%	1.2%	-1.2%	-1.2%	1.7%	-1.0%	-1.4%	-1.3%	-1.6%	-1.6%

=====
 GEORGE M. DAVIS ELEMENTARY SCHOOL
 HISTORICAL ENROLLMENT
 =====

GRADE	2010	2011	2012	2013	2014	2015	2016	2017	2018	2019	2020
KINDERGARTEN	128	89	134	119	123	133	101	122	115	123	97
FIRST	103	125	96	135	121	130	133	100	125	116	122
SECOND	94	105	122	96	144	120	136	123	98	124	105
THIRD	115	112	121	138	112	158	129	136	124	115	124
FOURTH	116	118	105	129	122	104	138	116	124	113	110
FIFTH	106	117	121	112	132	118	102	136	117	126	105
UNGRADED	3	6	5	6	0	0	0	1	1	2	0
TOTAL	665	672	704	735	754	763	739	734	704	719	663
% CHANGE		1.1%	4.8%	4.4%	2.6%	1.2%	-3.1%	-0.7%	-4.1%	2.1%	-7.8%

Note: 2010-2019: BEDS data from the NYSED, 2020: BEDS data as in the SD's SIRS 313 forms

G. M. Davis ES Migration	10 - 11	11 - 12	12 - 13	13 - 14	14 - 15	15 - 16	16 - 17	17 - 18	18 - 19	19 - 20	AVERAGE
K - 1	97.7%	107.9%	100.7%	101.7%	105.7%	100.0%	99.0%	102.5%	100.9%	99.2%	100.4%
1 - 2	101.9%	97.6%	100.0%	106.7%	99.2%	104.6%	92.5%	98.0%	99.2%	90.5%	95.0%
2 - 3	119.1%	115.2%	113.1%	116.7%	109.7%	107.5%	100.0%	100.8%	117.3%	100.0%	104.5%
3 - 4	102.6%	93.8%	106.6%	88.4%	92.9%	87.3%	89.9%	91.2%	91.1%	95.7%	92.0%
4 - 5	100.9%	102.5%	106.7%	102.3%	96.7%	98.1%	98.6%	100.9%	101.6%	92.9%	98.5%

 =====
 GEORGE M. DAVIS ELEMENTARY SCHOOL
 PROJECTED ENROLLMENT
 =====

GRADE	2020	2021	2022	2023	2024	2025	2026	2027	2028	2029	2030
	Actual										
KINDERGARTEN	97	115	117	115	114	115	103	105	105	103	103
FIRST	122	102	115	117	115	114	115	103	105	105	103
SECOND	105	115	97	109	111	109	108	109	98	100	100
THIRD	124	113	120	100	114	116	114	113	114	102	105
FOURTH	110	114	104	110	91	105	107	105	104	105	94
FIFTH	105	108	112	102	108	90	103	105	103	102	103
TOTAL	663	667	665	653	653	649	650	640	629	617	608
% CHANGE		0.6%	-0.3%	-1.8%	0.0%	-0.6%	0.2%	-1.5%	-1.7%	-1.9%	-1.5%

JEFFERSON ELEMENTARY SCHOOL
 HISTORICAL ENROLLMENT

GRADE	2010	2011	2012	2013	2014	2015	2016	2017	2018	2019	2020
KINDERGARTEN	111	103	86	96	79	98	91	72	74	72	80
FIRST	102	114	101	79	97	89	95	91	77	73	73
SECOND	111	107	121	90	76	106	86	99	94	83	75
THIRD	97	110	107	132	120	84	103	104	107	100	90
FOURTH	90	90	105	106	130	127	83	98	97	100	83
FIFTH	82	85	95	102	103	123	118	87	100	95	100
UNGRADED	8	9	9	6	5	3	6	5	6	6	9
TOTAL	601	618	624	611	610	630	582	556	555	529	510
% CHANGE		2.8%	1.0%	-2.1%	-0.2%	3.3%	-7.6%	-4.5%	-0.2%	-4.7%	-3.6%

Note: 2010-2019: BEDS data from the NYSED, 2020: BEDS data as in the SD's SIRS 313 forms

Jefferson ES Migration	10 - 11	11 - 12	12 - 13	13 - 14	14 - 15	15 - 16	16 - 17	17 - 18	18 - 19	19 - 20	AVERAGE
K - 1	102.7%	98.1%	91.9%	101.0%	112.7%	96.9%	100.0%	106.9%	98.6%	101.4%	101.7%
1 - 2	104.9%	106.1%	89.1%	96.2%	109.3%	96.6%	104.2%	103.3%	107.8%	102.7%	102.9%
2 - 3	99.1%	100.0%	109.1%	133.3%	110.5%	97.2%	120.9%	108.1%	106.4%	108.4%	111.0%
3 - 4	92.8%	95.5%	99.1%	98.5%	105.8%	98.8%	95.1%	93.3%	93.5%	83.0%	95.2%
4 - 5	94.4%	105.6%	97.1%	97.2%	94.6%	92.9%	104.8%	102.0%	97.9%	100.0%	100.0%

 JEFFERSON ELEMENTARY SCHOOL
 PROJECTED ENROLLMENT

GRADE	2020	2021	2022	2023	2024	2025	2026	2027	2028	2029	2030
	Actual										
KINDERGARTEN	80	79	80	78	78	78	70	72	71	70	70
FIRST	73	81	80	81	79	79	79	71	73	72	71
SECOND	75	75	83	82	83	81	81	81	73	75	74
THIRD	90	85	83	91	91	92	90	90	90	81	83
FOURTH	83	86	81	79	87	87	88	86	86	86	77
FIFTH	100	83	86	81	79	87	87	88	86	86	86
UNGRADED	9	8	8	8	8	8	8	8	8	8	8
TOTAL	510	497	501	500	505	512	503	496	487	478	469
% CHANGE		-2.5%	0.8%	-0.2%	1.0%	1.4%	-1.8%	-1.4%	-1.8%	-1.8%	-1.9%

TRINITY ELEMENTARY SCHOOL
HISTORICAL ENROLLMENT

GRADE	2010	2011	2012	2013	2014	2015	2016	2017	2018	2019	2020
KINDERGARTEN	126	127	129	114	140	142	124	124	139	130	139
FIRST	145	126	139	132	117	147	138	126	117	136	130
SECOND	132	139	144	138	136	128	148	138	111	122	144
THIRD	137	154	152	149	156	167	139	167	144	125	139
FOURTH	157	133	156	158	152	153	162	135	165	147	125
FIFTH	159	150	137	156	157	167	153	158	140	160	142
UNGRADED	0	4	2	2	0	0	0	0	1	1	0
TOTAL	856	833	859	849	858	904	864	848	817	821	819
% CHANGE		-2.7%	3.1%	-1.2%	1.1%	5.4%	-4.4%	-1.9%	-3.7%	0.5%	-0.2%

Note: 2010-2019: BEDS data from the NYSED, 2020: BEDS data as in the SD's SIRS 313 forms

Trinity ES Migration	10 - 11	11 - 12	12 - 13	13 - 14	14 - 15	15 - 16	16 - 17	17 - 18	18 - 19	19 - 20	AVERAGE
K - 1	100.0%	109.4%	102.3%	102.6%	105.0%	97.2%	101.6%	94.4%	97.8%	100.0%	98.2%
1 - 2	95.9%	114.3%	99.3%	103.0%	109.4%	100.7%	100.0%	88.1%	104.3%	105.9%	102.7%
2 - 3	116.7%	109.4%	103.5%	113.0%	122.8%	108.6%	112.8%	104.3%	112.6%	113.9%	113.3%
3 - 4	97.1%	101.3%	103.9%	102.0%	98.1%	97.0%	97.1%	98.8%	102.1%	100.0%	99.5%
4 - 5	95.5%	103.0%	100.0%	99.4%	109.9%	100.0%	97.5%	103.7%	97.0%	96.6%	98.7%

TRINITY ELEMENTARY SCHOOL
PROJECTED ENROLLMENT

GRADE	2020	2021	2022	2023	2024	2025	2026	2027	2028	2029	2030
	Actual										
KINDERGARTEN	139	132	134	132	131	132	118	121	120	119	119
FIRST	130	135	129	131	129	128	129	115	118	117	116
SECOND	144	133	139	132	135	132	131	132	118	121	120
THIRD	139	166	151	155	150	153	150	148	150	134	138
FOURTH	125	138	164	150	153	148	151	149	146	149	132
FIFTH	142	123	136	162	148	151	146	149	147	144	147
TOTAL	819	827	853	862	846	844	825	814	799	784	772
% CHANGE		1.0%	3.1%	1.1%	-1.9%	-0.2%	-2.3%	-1.3%	-1.8%	-1.9%	-1.5%

WILLIAM B. WARD ELEMENTARY SCHOOL
 HISTORICAL ENROLLMENT

GRADE	2010	2011	2012	2013	2014	2015	2016	2017	2018	2019	2020
KINDERGARTEN	139	152	145	153	180	173	174	173	153	181	116
FIRST	160	149	156	157	160	182	171	172	170	146	178
SECOND	159	169	158	159	163	158	180	168	181	184	155
THIRD	184	182	185	179	167	169	170	196	179	170	179
FOURTH	179	168	171	162	173	163	175	163	187	165	158
FIFTH	181	174	176	170	165	180	165	179	158	186	167
UNGRADED	9	9	8	6	6	6	5	7	6	7	5
TOTAL	1,011	1,003	999	986	1,014	1,031	1,040	1,058	1,034	1,039	958
% CHANGE		-0.8%	-0.4%	-1.3%	2.8%	1.7%	0.9%	1.7%	-2.3%	0.5%	-7.8%

Note: 2010-2019: BEDS data from the NYSED, 2020: BEDS data as in the SD's SIRS 313 forms

W. B. Ward ES Migration	10 - 11	11 - 12	12 - 13	13 - 14	14 - 15	15 - 16	16 - 17	17 - 18	18 - 19	19 - 20	AVERAGE
K - 1	107.2%	102.6%	108.3%	104.6%	101.1%	98.8%	98.9%	98.3%	95.4%	98.3%	98.6%
1 - 2	105.6%	106.0%	101.9%	103.8%	98.8%	98.9%	98.2%	105.2%	108.2%	106.2%	104.5%
2 - 3	114.5%	109.5%	113.3%	105.0%	103.7%	107.6%	108.9%	106.5%	93.9%	97.3%	99.3%
3 - 4	91.3%	94.0%	87.6%	96.6%	97.6%	103.6%	95.9%	95.4%	92.2%	92.9%	94.1%
4 - 5	97.2%	104.8%	99.4%	101.9%	104.0%	101.2%	102.3%	96.9%	99.5%	101.2%	100.0%

 WILLIAM B. WARD ELEMENTARY SCHOOL
 PROJECTED ENROLLMENT

GRADE	2020	2021	2022	2023	2024	2025	2026	2027	2028	2029	2030
	Actual										
KINDERGARTEN	116	155	158	156	154	156	139	143	142	139	140
FIRST	178	124	153	156	154	152	154	137	141	140	137
SECOND	155	185	129	161	162	162	160	162	143	147	146
THIRD	179	157	183	126	161	162	162	160	162	143	147
FOURTH	158	169	147	171	118	151	151	151	150	151	134
FIFTH	167	159	170	148	172	118	152	152	152	151	152
UNGRADED	5	5	5	5	5	5	5	5	4	4	4
TOTAL	958	954	945	923	926	906	923	910	894	875	860
% CHANGE		-0.4%	-0.9%	-2.3%	0.3%	-2.2%	1.9%	-1.4%	-1.8%	-2.1%	-1.7%

=====
 DANIEL WEBSTER ELEMENTARY SCHOOL
 HISTORICAL ENROLLMENT
 =====

GRADE	2010	2011	2012	2013	2014	2015	2016	2017	2018	2019	2020
KINDERGARTEN	68	62	69	68	70	73	70	62	67	69	63
FIRST	79	67	66	65	70	74	69	66	61	63	67
SECOND	72	84	81	70	69	65	72	73	81	61	64
THIRD	96	92	97	95	92	81	83	84	76	86	75
FOURTH	113	116	116	115	118	114	99	108	102	104	101
FIFTH	111	112	121	109	119	111	116	105	105	101	111
UNGRADED	5	8	6	3	4	1	1	0	0	1	1
TOTAL	544	541	556	525	542	519	510	498	492	485	482
% CHANGE		-0.6%	2.8%	-5.6%	3.2%	-4.2%	-1.7%	-2.4%	-1.2%	-1.4%	-0.6%

Note: 2010-2019: BEDS data from the NYSED, 2020: BEDS data as in the SD's SIRS 313 forms

D. Webster ES Migration	10 - 11	11 - 12	12 - 13	13 - 14	14 - 15	15 - 16	16 - 17	17 - 18	18 - 19	19 - 20	AVERAGE
K - 1	98.5%	106.5%	94.2%	102.9%	105.7%	94.5%	94.3%	98.4%	94.0%	97.1%	96.5%
1 - 2	106.3%	120.9%	106.1%	106.2%	92.9%	97.3%	105.8%	122.7%	100.0%	101.6%	105.5%
2 - 3	127.8%	115.5%	117.3%	131.4%	117.4%	127.7%	116.7%	104.1%	106.2%	123.0%	116.8%
3 - 4	120.8%	126.1%	118.6%	124.2%	123.9%	122.2%	130.1%	121.4%	136.8%	117.4%	125.6%
4 - 5	99.1%	104.3%	94.0%	103.5%	94.1%	101.8%	106.1%	97.2%	99.0%	106.7%	102.2%

 =====
 DANIEL WEBSTER ELEMENTARY SCHOOL
 PROJECTED ENROLLMENT
 =====

GRADE	2020	2021	2022	2023	2024	2025	2026	2027	2028	2029	2030
	Actual										
KINDERGARTEN	63	66	67	66	65	66	59	60	60	59	59
FIRST	67	61	64	65	64	63	64	57	58	58	57
SECOND	64	71	64	68	69	68	66	68	60	61	61
THIRD	75	76	83	75	79	81	79	77	79	70	71
FOURTH	101	94	95	104	94	99	102	99	97	99	88
FIFTH	111	103	96	97	106	96	101	104	101	99	101
UNGRADED	1	1	1	1	1	1	1	1	1	1	1
TOTAL	482	472	470	476	478	474	472	466	456	447	438
% CHANGE		-2.1%	-0.4%	1.3%	0.4%	-0.8%	-0.4%	-1.3%	-2.1%	-2.0%	-2.0%

ALBERT LEONARD MIDDLE SCHOOL
HISTORICAL ENROLLMENT

GRADE	2010	2011	2012	2013	2014	2015	2016	2017	2018	2019	2020
SIXTH	380	399	405	422	395	412	419	400	429	359	372
SEVENTH	438	385	401	418	423	398	397	427	387	416	348
EIGHTH	408	432	388	387	410	430	403	397	440	383	398
UNGRADED	2	5	6	9	3	3	1	6	6	10	6
TOTAL	1,228	1,221	1,200	1,236	1,231	1,243	1,220	1,230	1,262	1,168	1,124
% CHANGE		-0.6%	-1.7%	3.0%	-0.4%	1.0%	-1.9%	0.8%	2.6%	-7.4%	-3.8%

Note: 2010-2019: BEDS data from the NYSED, 2020: BEDS data as in the SD's SIRS 313 forms

A. Leonard MS Migration	10 - 11	11 - 12	12 - 13	13 - 14	14 - 15	15 - 16	16 - 17	17 - 18	18 - 19	19 - 20	AVERAGE
5 - 6	100.3%	100.5%	101.0%	101.0%	99.0%	102.4%	104.4%	102.1%	94.5%	90.1%	97.3%
6 - 7	101.3%	100.5%	103.2%	100.2%	100.8%	96.4%	101.9%	96.8%	97.0%	96.9%	97.8%
7 - 8	98.6%	100.8%	96.5%	98.1%	101.7%	101.3%	100.0%	103.0%	99.0%	95.7%	99.4%

ALBERT LEONARD MIDDLE SCHOOL
PROJECTED ENROLLMENT

Feeder Schools: Davis ES, Ward ES and Webster ES

GRADE	2020	2021	2022	2023	2024	2025	2026	2027	2028	2029	2030
	Actual										
SIXTH	372	373	360	368	338	375	296	346	351	346	342
SEVENTH	348	364	365	352	360	331	367	289	338	343	338
EIGHTH	398	346	363	363	350	358	329	365	287	336	341
UNGRADED	6	7	7	7	7	7	7	7	7	7	7
TOTAL	1,124	1,090	1,095	1,090	1,055	1,071	999	1,007	983	1,032	1,028
% CHANGE		-3.0%	0.5%	-0.5%	-3.2%	1.5%	-6.7%	0.8%	-2.4%	5.0%	-0.4%

ISAAC E. YOUNG MIDDLE SCHOOL
HISTORICAL ENROLLMENT

GRADE	2010	2011	2012	2013	2014	2015	2016	2017	2018	2019	2020
SIXTH	395	385	339	358	409	372	404	383	324	346	402
SEVENTH	352	393	387	339	364	417	385	407	385	326	342
EIGHTH	388	351	386	396	345	369	408	384	409	383	320
UNGRADED	18	26	32	44	39	36	27	16	10	14	14
TOTAL	1,153	1,155	1,144	1,137	1,157	1,194	1,224	1,190	1,128	1,069	1,078
% CHANGE		0.2%	-1.0%	-0.6%	1.8%	3.2%	2.5%	-2.8%	-5.2%	-5.2%	0.8%

Note: 2010-2019: BEDS data from the NYSED, 2020: BEDS data as in the SD's SIRS 313 forms

I. E. Young MS Migration	10 - 11	11 - 12	12 - 13	13 - 14	14 - 15	15 - 16	16 - 17	17 - 18	18 - 19	19 - 20	AVERAGE
5 - 6	101.9%	93.9%	101.7%	103.8%	95.9%	92.0%	90.8%	88.5%	96.6%	95.5%	94.2%
6 - 7	99.5%	100.5%	100.0%	101.7%	102.0%	103.5%	100.7%	100.5%	100.6%	98.8%	100.8%
7 - 8	99.7%	98.2%	102.3%	101.8%	101.4%	97.8%	99.7%	100.5%	99.5%	98.2%	99.4%

ISAAC E. YOUNG MIDDLE SCHOOL
PROJECTED ENROLLMENT

Feeder Schools: Columbus ES, Jefferson ES and Trinity ES

GRADE	2020	2021	2022	2023	2024	2025	2026	2027	2028	2029	2030
	Actual										
SIXTH	402	367	298	327	349	316	334	334	337	333	331
SEVENTH	342	404	369	301	330	351	319	336	337	340	336
EIGHTH	320	340	401	367	299	328	349	317	334	335	338
UNGRADED	14	12	12	12	12	12	11	11	11	11	11
TOTAL	1,078	1,123	1,080	1,007	990	1,007	1,013	998	1,019	1,019	1,016
% CHANGE		4.2%	-3.8%	-6.8%	-1.7%	1.7%	0.6%	-1.5%	2.1%	0.0%	-0.3%

=====
 NEW ROCHELLE HIGH SCHOOL
 HISTORICAL ENROLLMENT
 =====

GRADE	2010	2011	2012	2013	2014	2015	2016	2017	2018	2019	2020
NINTH	1,081	1,016	1,023	991	983	959	1,000	1,030	924	1,014	920
TENTH	830	836	788	857	872	815	866	896	910	820	903
ELEVENTH	689	754	759	684	703	680	680	688	703	793	738
TWELFTH	769	713	764	855	808	837	738	820	709	687	740
UNGRADED	44	45	55	40	35	39	50	47	51	58	56
TOTAL	3,413	3,364	3,389	3,427	3,401	3,330	3,334	3,481	3,297	3,372	3,357
% CHANGE		-1.4%	0.7%	1.1%	-0.8%	-2.1%	0.1%	4.4%	-5.3%	2.3%	-0.4%

Note: 2010-2019: BEDS data from the NYSED, 2020: BEDS data as in the SD's SIRS 313 forms
 =====

HS MIGRATION	10 - 11	11 - 12	12 - 13	13 - 14	14 - 15	15 - 16	16 - 17	17 - 18	18 - 19	19 - 20	AVERAGE
9 - 10	77.3%	77.6%	83.8%	88.0%	82.9%	90.3%	89.6%	88.3%	88.7%	89.1%	88.9%
10 - 11	90.8%	90.8%	86.8%	82.0%	78.0%	83.4%	79.4%	78.5%	87.1%	90.0%	86.4%
11 - 12	103.5%	101.3%	112.6%	118.1%	119.1%	108.5%	120.6%	103.1%	97.7%	93.3%	102.8%

 =====
 NEW ROCHELLE HIGH SCHOOL
 PROJECTED ENROLLMENT
 =====

GRADE	2020	2021	2022	2023	2024	2025	2026	2027	2028	2029	2030
	Actual										
NINTH	920	883	843	939	897	798	843	833	838	763	825
TENTH	903	818	785	750	835	798	710	750	741	745	679
ELEVENTH	738	780	707	678	648	721	689	613	648	640	644
TWELFTH	740	758	801	726	697	666	741	708	630	666	658
UNGRADED	56	54	53	53	52	51	51	50	50	49	48
TOTAL	3,357	3,293	3,189	3,146	3,129	3,034	3,034	2,954	2,907	2,863	2,854
% CHANGE		-1.9%	-3.2%	-1.3%	-0.5%	-3.0%	0.0%	-2.6%	-1.6%	-1.5%	-0.3%

Appendix B

Projected Enrollment with Student Yields from New Housing - PUMS Multipliers Applied

CITY SCHOOL DISTRICT OF NEW ROCHELLE
PROJECTED DISTRICT ENROLLMENT

with Impact of New Housing Projects - 5 completed in 2020 and 8 to be completed in 2021

GRADE	2020	2021	2022	2023	2024	2025	2026	2027	2028	2029	2030
	Actual										
KINDERGARTEN	697	777	787	769	761	768	688	704	700	689	690
FIRST	771	708	770	774	756	749	756	677	693	689	678
SECOND	753	765	701	757	761	744	737	744	666	682	678
THIRD	736	735	744	677	731	735	719	712	719	643	659
FOURTH	694	739	736	740	674	727	731	716	709	716	640
FIFTH	773	694	738	730	734	668	721	725	710	703	710
SIXTH	774	744	667	706	699	702	639	690	694	679	673
SEVENTH	690	772	741	662	700	694	697	634	685	689	674
EIGHTH	718	688	771	737	658	696	690	693	630	681	685
NINTH	920	887	848	948	906	809	856	848	852	774	837
TENTH	903	821	792	754	843	806	719	761	754	758	688
ELEVENTH	738	783	711	684	651	728	696	621	658	651	655
TWELFTH	740	760	808	731	703	669	748	715	638	676	669
UNGRADED	98	94	93	92	91	90	89	88	87	86	85
TOTAL K -12	10,005	9,967	9,907	9,761	9,668	9,585	9,486	9,328	9,195	9,116	9,021
CHANGE		-38	-60	-146	-93	-83	-99	-158	-133	-79	-95
% CHANGE		-0.4%	-0.6%	-1.5%	-1.0%	-0.9%	-1.0%	-1.7%	-1.4%	-0.9%	-1.0%

Projected Enrollment with Student Yields from New Housing - PUMS Multipliers Applied

CITY SCHOOL DISTRICT OF NEW ROCHELLE *with Impact of New Housing Projects - 5 completed in 2020 and 8 to be completed in 2021*
 PROJECTED DISTRICT ENROLLMENT BY GRADE CONFIGURATION

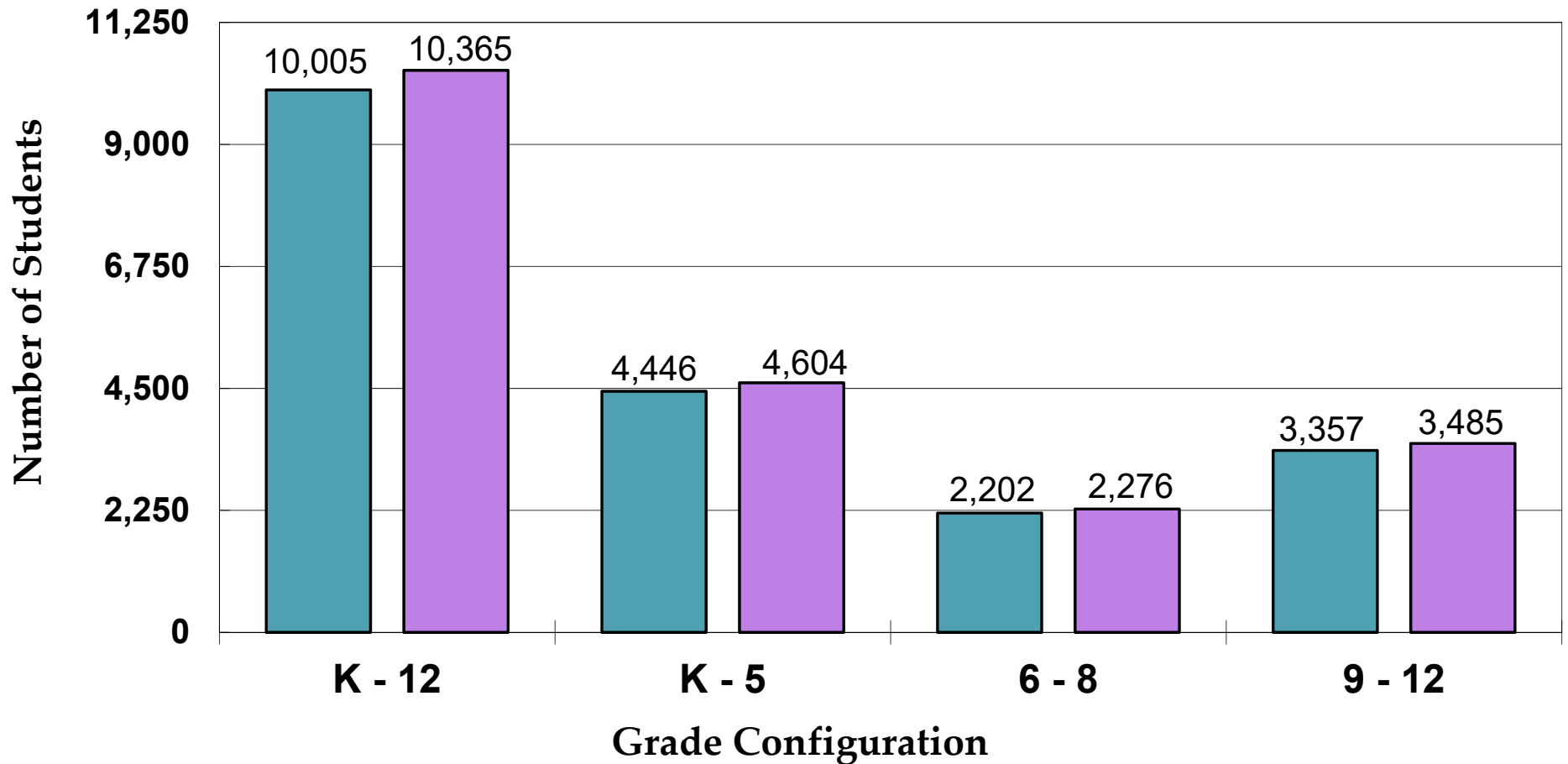
GRADE	2020	2021	2022	2023	2024	2025	2026	2027	2028	2029	2030
	Actual										
KINDERGARTEN	697	777	787	769	761	768	688	704	700	689	690
FIRST	771	708	770	774	756	749	756	677	693	689	678
SECOND	753	765	701	757	761	744	737	744	666	682	678
THIRD	736	735	744	677	731	735	719	712	719	643	659
FOURTH	694	739	736	740	674	727	731	716	709	716	640
FIFTH	773	694	738	730	734	668	721	725	710	703	710
UNGRADED	22	21	21	20	20	20	20	20	19	19	19
TOTAL K - 5	4,446	4,439	4,497	4,467	4,437	4,411	4,372	4,298	4,216	4,141	4,074
CHANGE		-7	58	-30	-30	-26	-39	-74	-82	-75	-67
% CHANGE		-0.2%	1.3%	-0.7%	-0.7%	-0.6%	-0.9%	-1.7%	-1.9%	-1.8%	-1.6%
SIXTH	774	744	667	706	699	702	639	690	694	679	673
SEVENTH	690	772	741	662	700	694	697	634	685	689	674
EIGHTH	718	688	771	737	658	696	690	693	630	681	685
UNGRADED	20	19	19	19	19	19	18	18	18	18	18
TOTAL 6 - 8	2,202	2,223	2,198	2,124	2,076	2,111	2,044	2,035	2,027	2,067	2,050
CHANGE		21	-25	-74	-48	35	-67	-9	-8	40	-17
% CHANGE		1.0%	-1.1%	-3.4%	-2.3%	1.7%	-3.2%	-0.4%	-0.4%	2.0%	-0.8%
NINTH	920	887	848	948	906	809	856	848	852	774	837
TENTH	903	821	792	754	843	806	719	761	754	758	688
ELEVENTH	738	783	711	684	651	728	696	621	658	651	655
TWELFTH	740	760	808	731	703	669	748	715	638	676	669
UNGRADED	56	54	53	53	52	51	51	50	50	49	48
TOTAL 9 - 12	3,357	3,305	3,212	3,170	3,155	3,063	3,070	2,995	2,952	2,908	2,897
CHANGE		-52	-93	-42	-15	-92	7	-75	-43	-44	-11
% CHANGE		-1.5%	-2.8%	-1.3%	-0.5%	-2.9%	0.2%	-2.4%	-1.4%	-1.5%	-0.4%
TOTAL K - 12	10,005	9,967	9,907	9,761	9,668	9,585	9,486	9,328	9,195	9,116	9,021
CHANGE		-38	-60	-146	-93	-83	-99	-158	-133	-79	-95
% CHANGE		-0.4%	-0.6%	-1.5%	-1.0%	-0.9%	-1.0%	-1.7%	-1.4%	-0.9%	-1.0%

Appendix C

City School District of New Rochelle

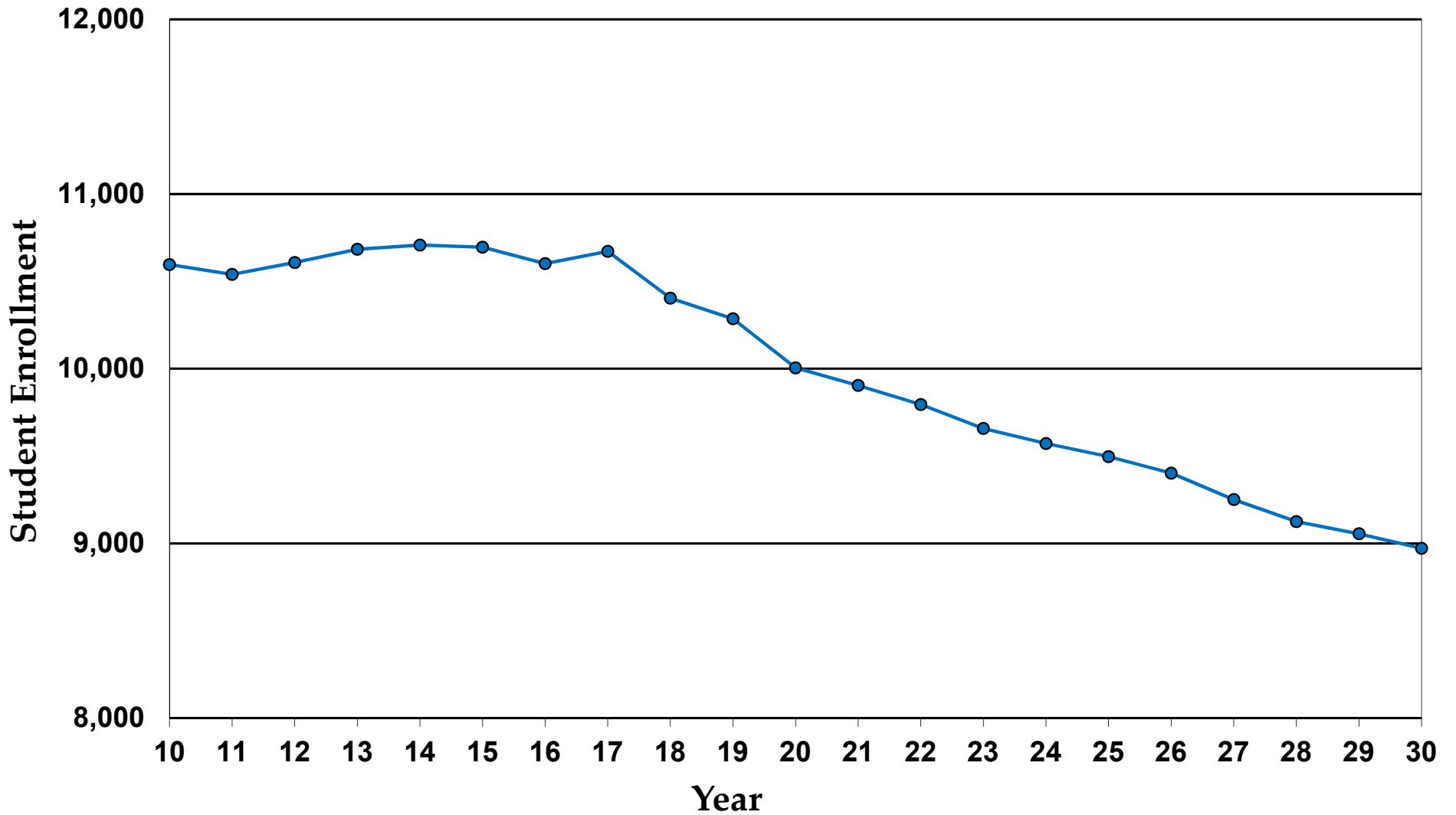
Accuracy of 2019-20 Western Suffolk BOCES Projections for 2020-21

2020-21 Enrollment



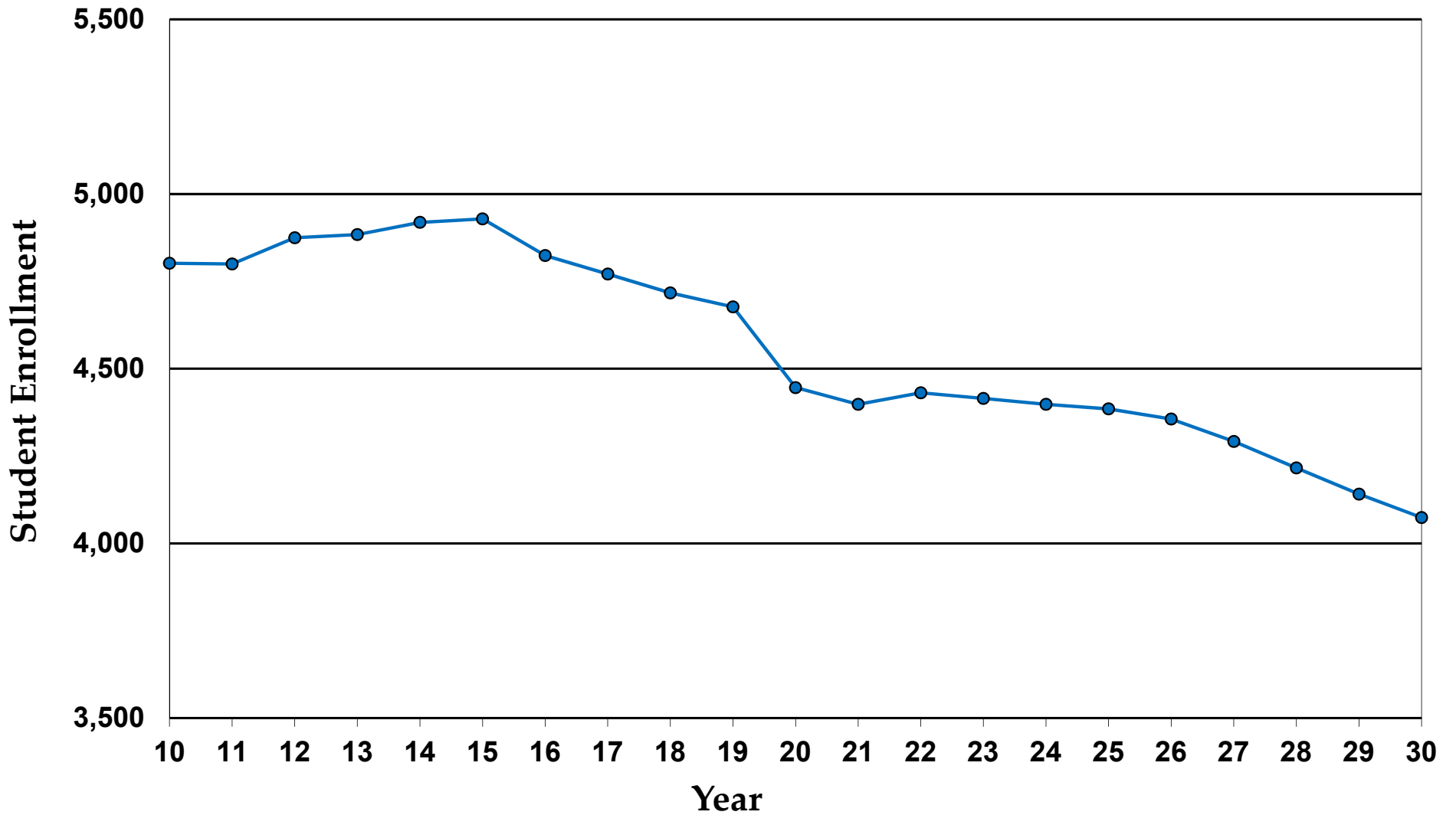
City School District of New Rochelle

Enrollment: Grades K - 12



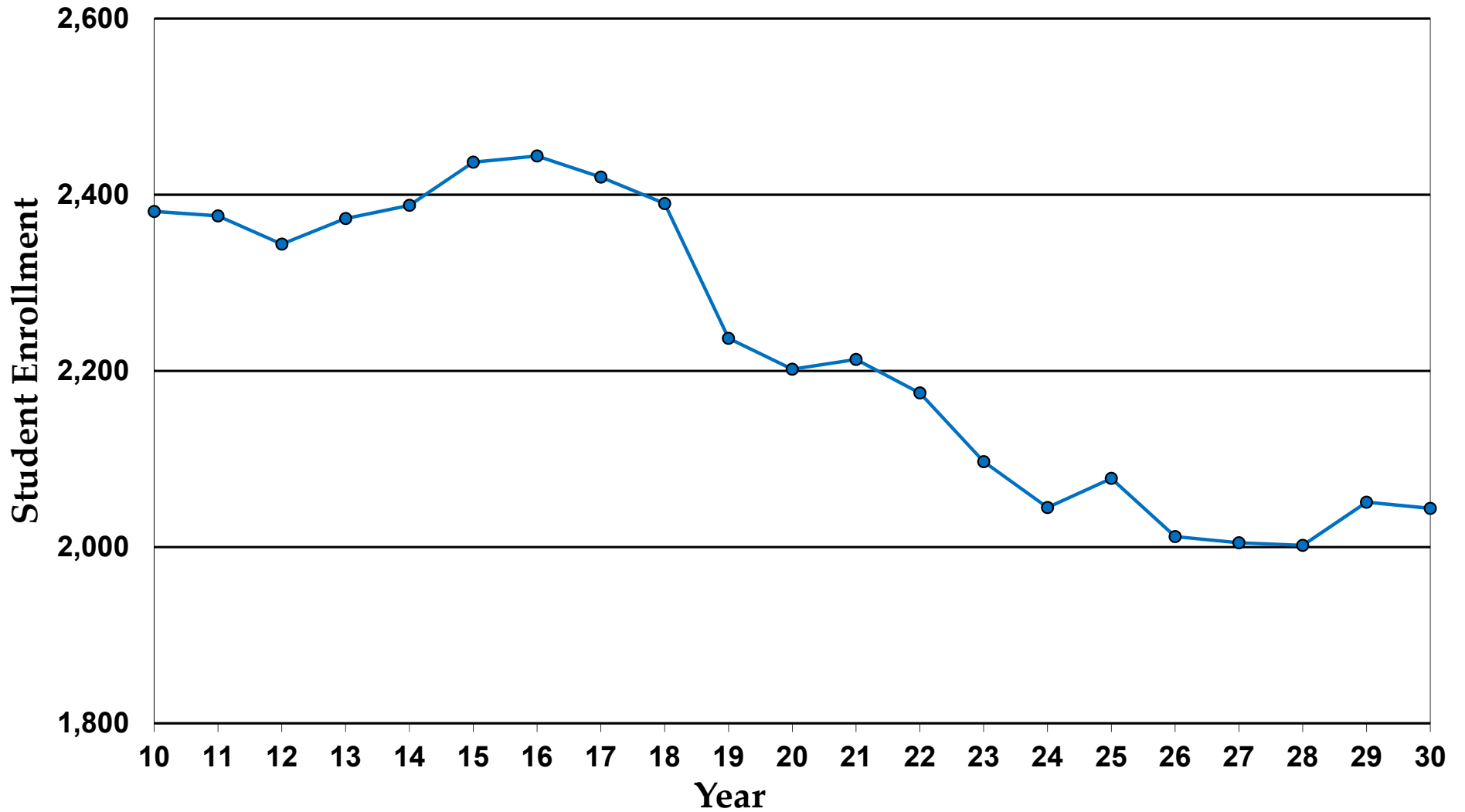
City School District of New Rochelle

Enrollment: Grades K - 5



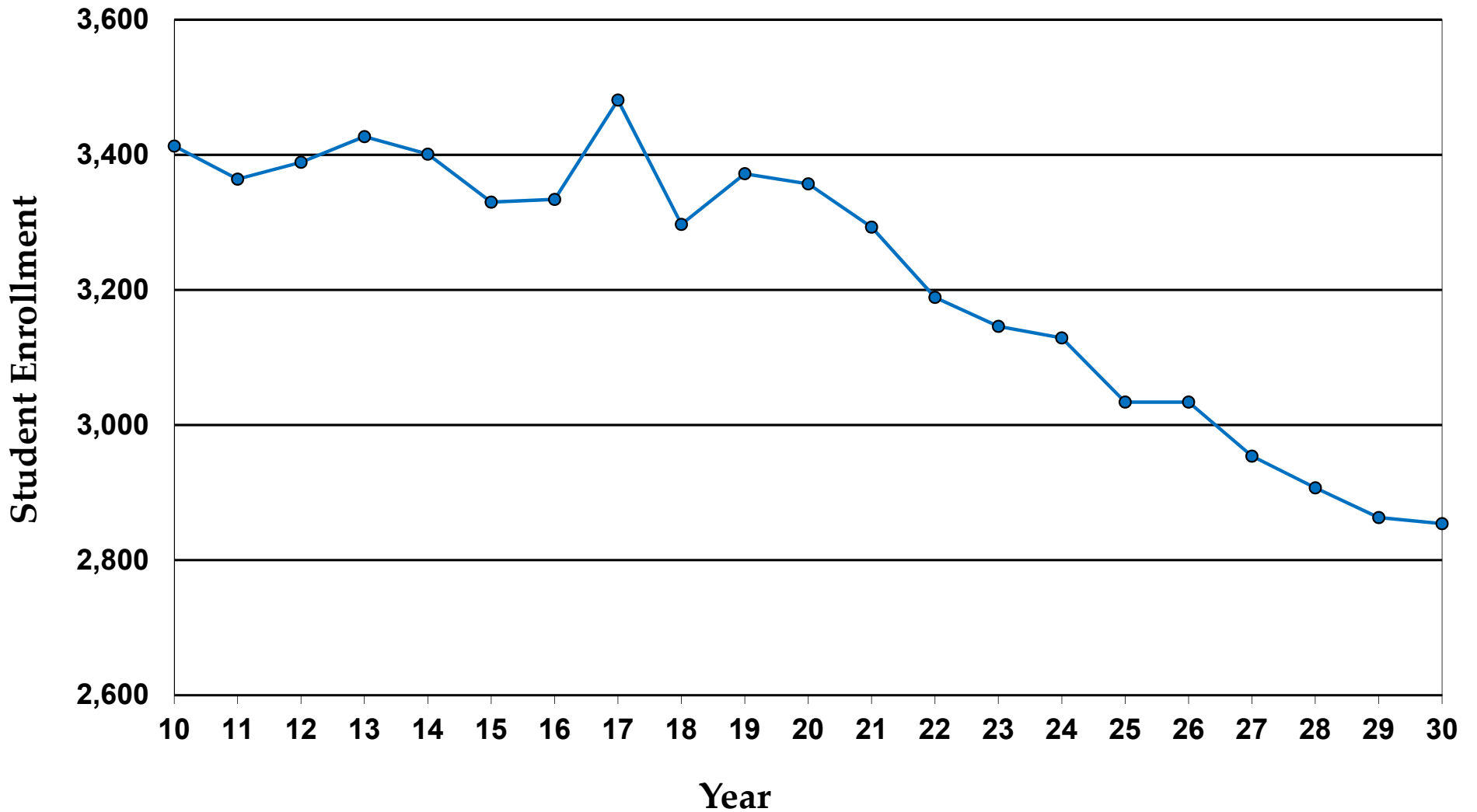
City School District of New Rochelle

Enrollment: Grades 6 - 8



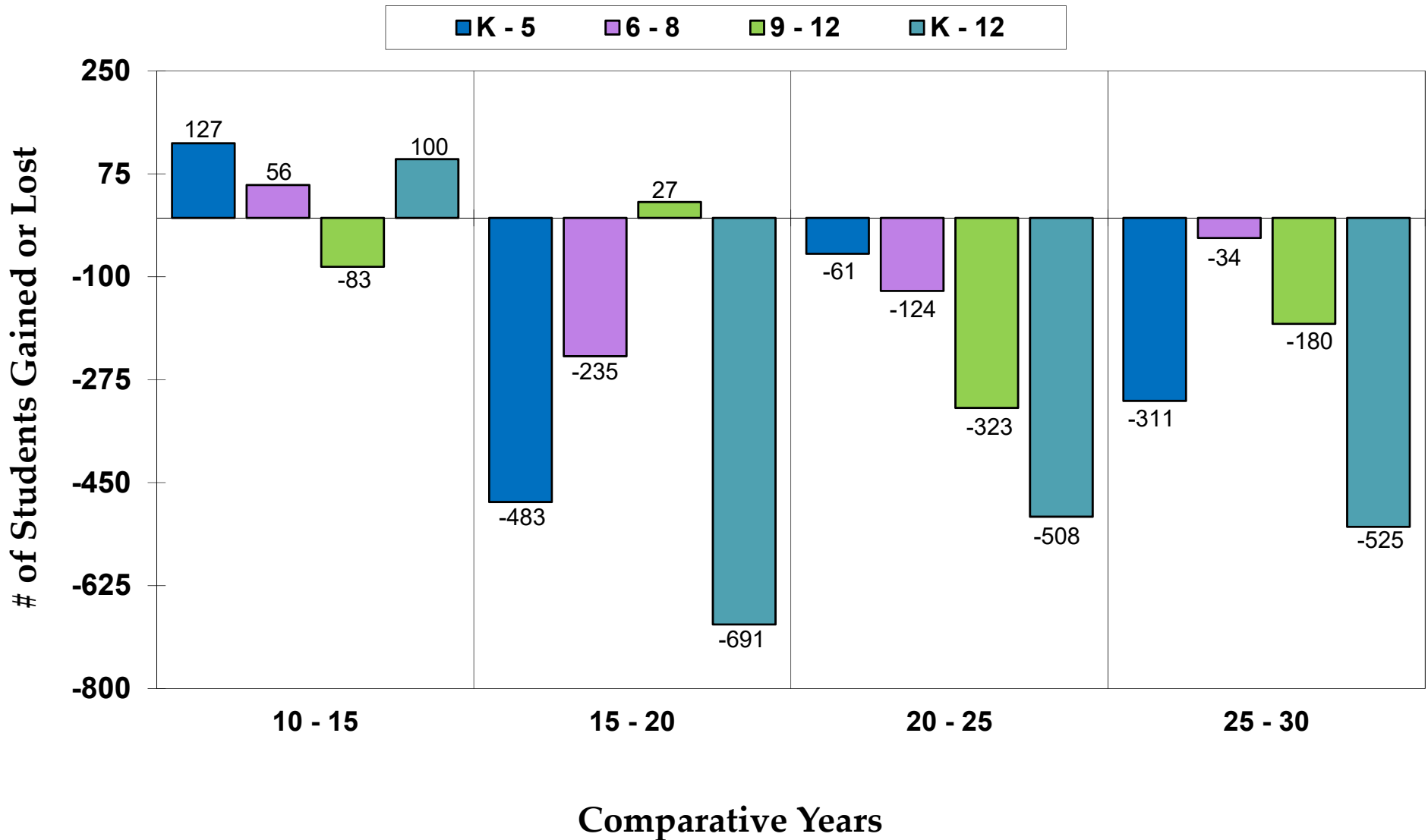
City School District of New Rochelle

Enrollment: Grades 9 - 12



City School District of New Rochelle

Enrollment Change 2010 - 2030



Ms. Jeanette Santos, President
Ms. Ilene Herz, Esq, Vice President
Mr. James Kaden
Mr. Brian J. Sales
Mr. Peter Wunsch
Ms. Maryann Zumpano
Ms. Joanne Klein, District Clerk

Mr. Michael Flynn
Chief Operating Officer
Ms. Angelique Johnson-Dingle
District Superintendent





Division of Instructional Support Services

Office of School Planning & Research
31 Lee Avenue
Wheatley Heights, NY 11798
631-595-6802